



Datasheet for ABIN604701

anti-Angiotensin II Type-1 Receptor antibody (AA 201-250)



[Go to Product page](#)

3 Images

Overview

Quantity:	0.05 mg
Target:	Angiotensin II Type-1 Receptor (AGTR1)
Binding Specificity:	AA 201-250
Reactivity:	Human, Rat, Mouse
Host:	Rabbit
Clonality:	Polyclonal
Conjugate:	This Angiotensin II Type-1 Receptor antibody is un-conjugated
Application:	Western Blotting (WB), ELISA, Immunohistochemistry (IHC), Immunohistochemistry (Paraffin-embedded Sections) (IHC (p))

Product Details

Brand:	IHC-plus™
Isotype:	IgG
Purification:	Immunoaffinity purified

Target Details

Target:	Angiotensin II Type-1 Receptor (AGTR1)
Alternative Name:	AGTR1 / AT1 Receptor (AGTR1 Products)
Background:	Name/Gene ID: AGTR1 Subfamily: Angiotensin Family: GPCR

Target Details

Synonyms: AGTR1, AG2S, AGTR1A, AGTR1B, Angiotensin II type-1 receptor, Ang ii receptor type 1a, Angiotensin receptor 1, Angiotensin receptor 1a, Angiotensin receptor 1B, AT1R, AT1 receptor, At1a receptor, AT1B, AT1AR, AT2R1, AT2R1A, AT2R1B, HAT1R, AT1, At1a, At1b receptor, AT1BR, Type-1 angiotensin II receptor

Gene ID: 185

UniProt: [P30556](#)

Pathways: [JAK-STAT Signaling](#), [ACE Inhibitor Pathway](#), [Regulation of Systemic Arterial Blood Pressure by Hormones](#), [Feeding Behaviour](#)

Application Details

Application Notes: Approved: ELISA, IHC, IHC-P (5 µg/mL), WB (1 - 2 µg/mL)

Usage: AGTR1 antibody can be used for detection of AGTR1 by Western blot at 1-2 µg/mL.

Comment: Target Species of Antibody: Human

Restrictions: For Research Use only

Handling

Format: Liquid

Concentration: Lot specific

Buffer: PBS, 0.02 % sodium azide

Preservative: Sodium azide

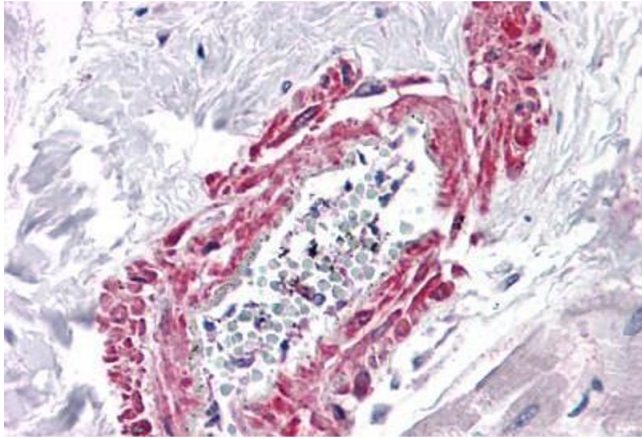
Precaution of Use: This product contains Sodium azide: a POISONOUS AND HAZARDOUS SUBSTANCE which should be handled by trained staff only.

Handling Advice: avoid freeze thaw cycles. Store undiluted.

Storage: 4 °C,-20 °C

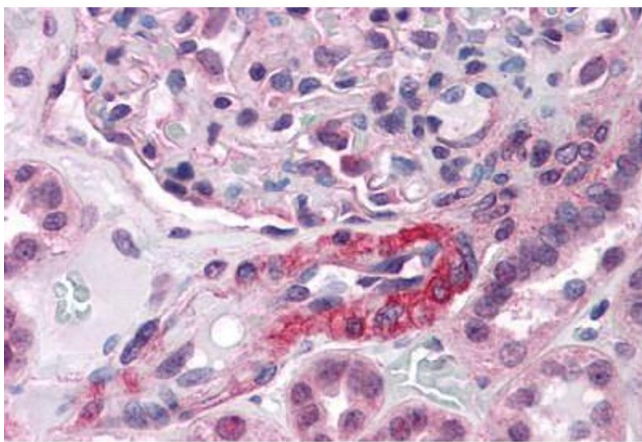
Storage Comment: Store at 4°C for 3 months and -20°C, stable for up to 1 year. Avoid repeated freeze-thaw cycles.

Expiry Date: 12 months



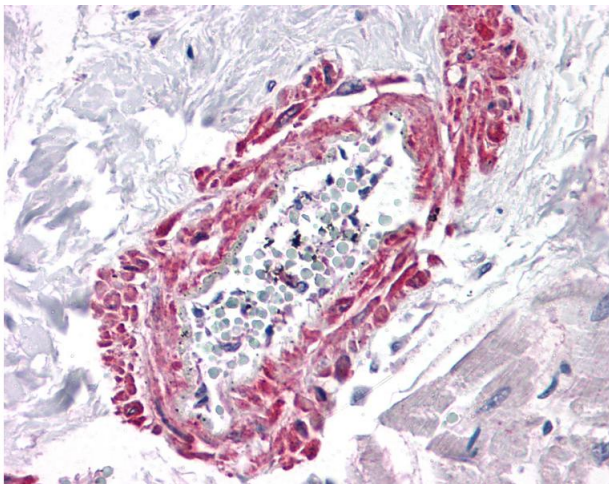
Immunohistochemistry (Formalin-fixed Paraffin-embedded Sections)

Image 1. Human Heart, Vessel: Formalin-Fixed, Paraffin-Embedded (FFPE)



Immunohistochemistry (Formalin-fixed Paraffin-embedded Sections)

Image 2. Human Kidney, Vessel: Formalin-Fixed, Paraffin-Embedded (FFPE)



Immunohistochemistry

Image 3. Anti-AGTR1 antibody IHC of human heart, vessel. Immunohistochemistry of formalin-fixed, paraffin-embedded tissue after heat-induced antigen retrieval. Antibody concentration 5 ug/ml.