

Datasheet for ABIN604747

anti-Liver Arginase antibody (N-Term)



[Go to Product page](#)

3 Images

Overview

Quantity:	50 µg
Target:	Liver Arginase (ARG1)
Binding Specificity:	N-Term
Reactivity:	Human, Rat, Mouse, Cow, Rabbit, Dog, Pig, Horse, Monkey, Bat
Host:	Rabbit
Clonality:	Polyclonal
Conjugate:	This Liver Arginase antibody is un-conjugated
Application:	Western Blotting (WB), Immunohistochemistry (IHC), Immunohistochemistry (Paraffin-embedded Sections) (IHC (p))

Product Details

Brand:	IHC-plus™
Immunogen:	Synthetic peptide from N-Terminus of human ARG1 (P05089, NP_000036). Percent identity by BLAST analysis: Human, Chimpanzee, Gorilla, Gibbon, Monkey, Marmoset, Mouse, Rat, Dog, Bovine, Bat, Rabbit, Horse, Pig, Opossum, Platypus (100%), Elephant, Guinea pig, Xenopus, Frog, Salmon, Smelt, Stickleback (92%). Type of Immunogen: Synthetic peptide
Specificity:	Human ARG1 / Liver Arginase. Based on the sequence of the immunogenic peptide this antibody reacts with all three isoforms.
Predicted Reactivity:	Percent identity by BLAST analysis: Dog (100%) Guinea pig, Xenopus (92%).

Product Details

Purification: Immunoaffinity purified

Target Details

Target: Liver Arginase (ARG1)

Alternative Name: / Arginase 1 ([ARG1 Products](#))

Background: Name/Gene ID: ARG1

Synonyms: ARG1, Arginase, liver, Arginase 1, Liver-type arginase, Liver arginase, Arginase-1, Type I arginase

Gene ID: 383

NCBI Accession: [NP_000036](#)

UniProt: [P05089](#)

Pathways: [Cellular Response to Molecule of Bacterial Origin](#)

Application Details

Application Notes: Approved: IHC, IHC-P (5 µg/mL), WB (0.2 - 1 µg/mL)

Usage: Western Blot: Suggested dilution at 1 µg/mL in 5 % skim milk / PBS buffer, and HRP conjugated anti-Rabbit IgG should be diluted in 1: 50,000 - 100,000 as secondary antibody.

Comment: Target Species of Antibody: Human

Restrictions: For Research Use only

Handling

Format: Lyophilized

Reconstitution: Distilled water

Concentration: Lot specific

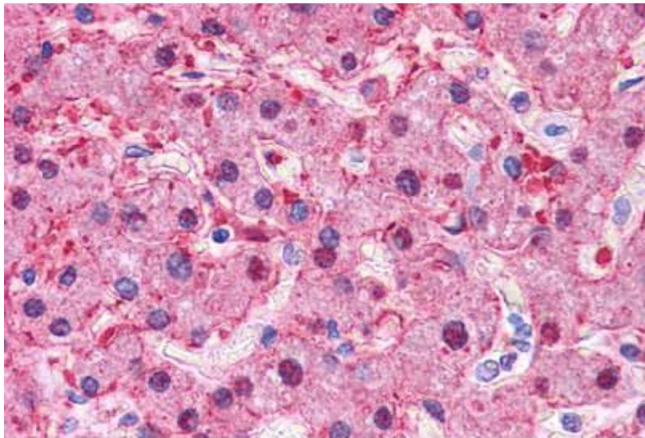
Buffer: Lyophilized from PBS with 2 % sucrose

Handling Advice: Avoid repeat freeze-thaw cycles.

Storage: 4 °C, -20 °C

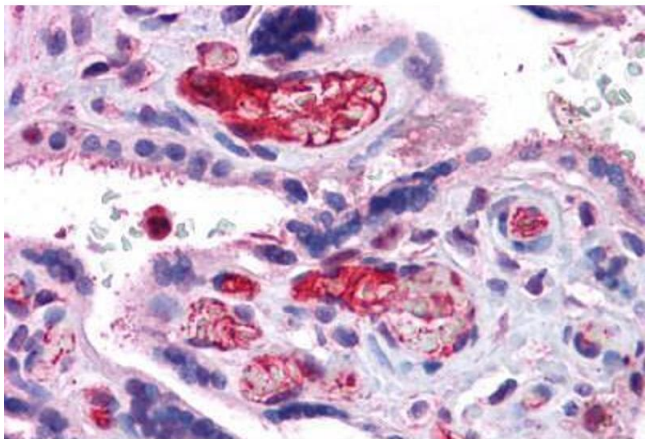
Storage Comment: Long term: -20°C, the use of 50% glycerol is recommended if storing aliquots in -20°C for long

term use (up to 1 year)
Short term (less than 1 week): 4°C. Avoid freeze-thaw cycles.



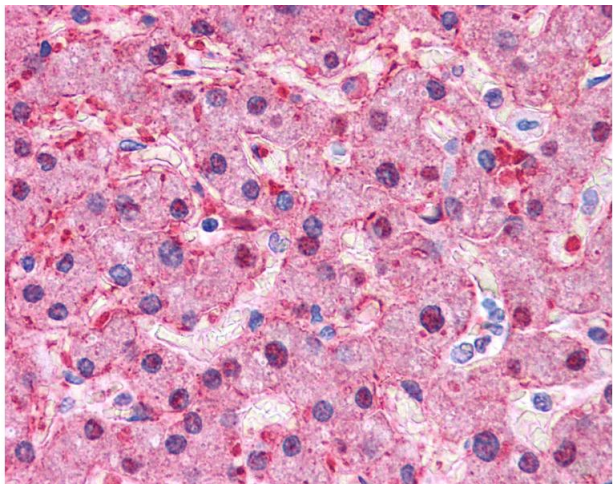
Immunohistochemistry (Formalin-fixed Paraffin-embedded Sections)

Image 1. Human Liver: Formalin-Fixed, Paraffin-Embedded (FFPE)



Immunohistochemistry (Formalin-fixed Paraffin-embedded Sections)

Image 2. Human Placenta: Formalin-Fixed, Paraffin-Embedded (FFPE)



Immunohistochemistry

Image 3. Anti-ARG1 antibody IHC of human liver. Immunohistochemistry of formalin-fixed, paraffin-embedded tissue after heat-induced antigen retrieval. Antibody concentration 5 ug/ml. This image was taken for the unconjugated form of this product. Other forms ...