

Datasheet for ABIN604753

anti-FABP1 antibody (N-Term)

4 Images



[Go to Product page](#)

Overview

Quantity:	50 µg
Target:	FABP1
Binding Specificity:	N-Term
Reactivity:	Human, Mouse, Cow, Dog, Horse, Guinea Pig, Bat, Monkey
Host:	Rabbit
Clonality:	Polyclonal
Conjugate:	This FABP1 antibody is un-conjugated
Application:	Western Blotting (WB), Immunohistochemistry (IHC), Immunohistochemistry (Paraffin-embedded Sections) (IHC (p))

Product Details

Brand:	IHC-plus™
Immunogen:	Synthetic peptide from N-Terminus of human FABP1 (P07148, NP_001434). Percent identity by BLAST analysis: Human, Chimpanzee, Gorilla, Orangutan, Galago, Marmoset, Mouse, Elephant, Panda, Dog, Bat, Horse, Opossum, Guinea pig (100%), Gibbon, Rat, Pig (92%), Rabbit, Zebra finch (91%), Platypus, Stickleback, Pufferfish, Zebrafish (84%), Turkey, Chicken, Catfish (83%). Type of Immunogen: Synthetic peptide
Isotype:	IgG
Specificity:	Human FABP1
Predicted Reactivity:	Percent identity by BLAST analysis: Human, Mouse, Dog (100%) Chicken (83%).

Product Details

Purification: Immunoaffinity purified

Target Details

Target: FABP1

Alternative Name: FABP1 / L-FABP ([FABP1 Products](#))

Background: Name/Gene ID: FABP1

Synonyms: FABP1, FABPL, L-FABP, Fatty acid-binding protein 1

Gene ID: 2168

NCBI Accession: [NP_001434](#)

UniProt: [P07148](#)

Pathways: [Chromatin Binding](#), [Regulation of Lipid Metabolism by PPARalpha](#)

Application Details

Application Notes: Approved: IHC, IHC-P (5 µg/mL), WB (0.2 - 1 µg/mL)

Usage: Western Blot: Suggested dilution at 1.0 µg/mL in 5 % skim milk / PBS buffer, and HRP conjugated anti-Rabbit IgG should be diluted in 1: 50,000 - 100,000 as second antibody. ELISA titer in peptide based assay: 1:312500.

Comment: Target Species of Antibody: Human

Restrictions: For Research Use only

Handling

Format: Lyophilized

Reconstitution: Distilled water

Concentration: Lot specific

Buffer: Lyophilized from PBS with 2 % sucrose

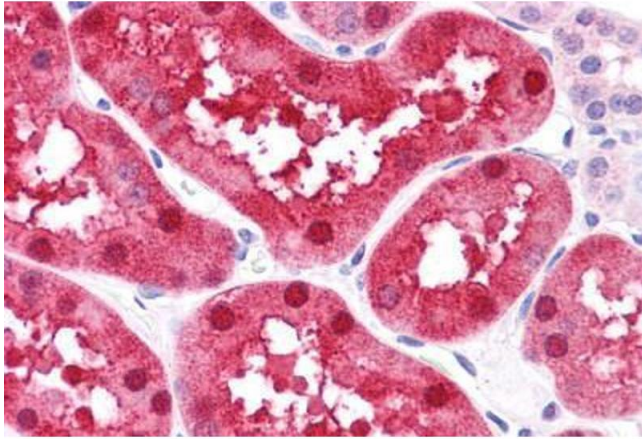
Handling Advice: Avoid repeat freeze-thaw cycles.

Storage: 4 °C, -20 °C

Storage Comment: Long term: -20°C, the use of 50% glycerol is recommended if storing aliquots in -20°C for long

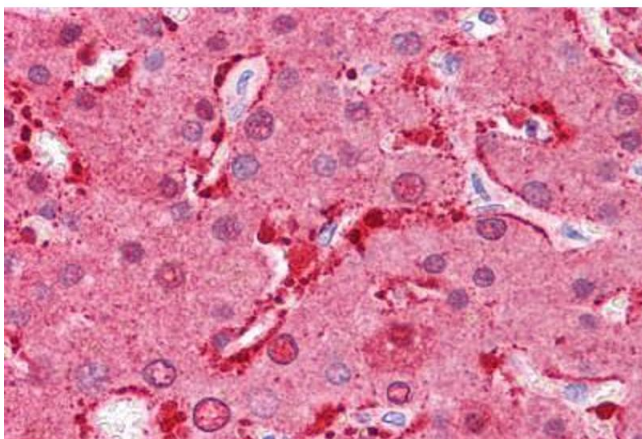
term use (up to 1 year)

Short term (less than 1 week): 4°C. Avoid freeze-thaw cycles.



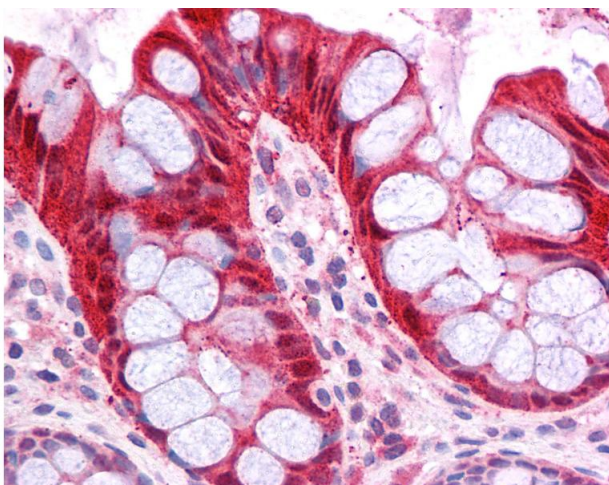
Immunohistochemistry (Formalin-fixed Paraffin-embedded Sections)

Image 1. Human Kidney: Formalin-Fixed, Paraffin-Embedded (FFPE)



Immunohistochemistry (Formalin-fixed Paraffin-embedded Sections)

Image 2. Human Liver: Formalin-Fixed, Paraffin-Embedded (FFPE)



Immunohistochemistry

Image 3. Anti-FABP1 antibody IHC of human colon. Immunohistochemistry of formalin-fixed, paraffin-embedded tissue after heat-induced antigen retrieval. Antibody concentration 5 ug/ml. This image was taken for the unconjugated form of this product. Other form ...

Please check the [product details page](#) for more images. Overall 4 images are available for ABIN604753.