

Datasheet for ABIN604755
anti-HADHB antibody (AA 351-400)

3 Images

[Go to Product page](#)

Overview

Quantity:	50 µg
Target:	HADHB
Binding Specificity:	AA 351-400
Reactivity:	Human, Mouse, Rat, Pig, Zebrafish (Danio rerio), Bat, Monkey
Host:	Rabbit
Clonality:	Polyclonal
Conjugate:	This HADHB antibody is un-conjugated
Application:	Western Blotting (WB), Immunohistochemistry (IHC), Immunohistochemistry (Paraffin-embedded Sections) (IHC (p))

Product Details

Brand:	IHC-plus™
Immunogen:	Synthetic peptide located between aa351-400 of human HADHB (P55084, NP_000174). Percent identity by BLAST analysis: Human, Chimpanzee, Gorilla, Gibbon, Monkey, Marmoset, Mouse, Rat, Panda, Bat, Pig (100%), Bovine, Rabbit, Horse, Opossum, Guinea pig, Platypus, Xenopus (92%), Elephant, Turkey, Zebra finch, Sparrow, Chicken, Salmon, Stickleback, Zebrafish (85%). Type of Immunogen: Synthetic peptide
Isotype:	IgG
Specificity:	Human HADHB
Predicted Reactivity:	Percent identity by BLAST analysis: Human, Pig (100%) Bovine, Horse, Guinea pig, Xenopus

Product Details

(92%) Chicken, Zebrafish (85%).

Purification: Immunoaffinity purified

Target Details

Target: HADHB

Alternative Name: HADHB ([HADHB Products](#))

Background: Name/Gene ID: HADHB

Synonyms: HADHB, Acetyl-CoA acyltransferase, Beta-ketothiolase, ECHB, MTPB, MSTP029, TP-BETA

Gene ID: 3032

NCBI Accession: [NP_000174](#)

UniProt: [P55084](#)

Pathways: [Monocarboxylic Acid Catabolic Process](#)

Application Details

Application Notes: Approved: IHC, IHC-P (5 µg/mL), WB

Usage: ELISA titer using peptide based assay: 1:312500. Western Blot: Suggested dilution at 0.25 µg/mL in 5 % skim milk / PBS buffer, and HRP conjugated anti-Rabbit IgG should be diluted in 1:50000 - 100000 as second antibody.

Comment: Target Species of Antibody: Human

Restrictions: For Research Use only

Handling

Format: Lyophilized

Reconstitution: Reconstitute with 50 µL sterile ddH2O.

Concentration: Lot specific

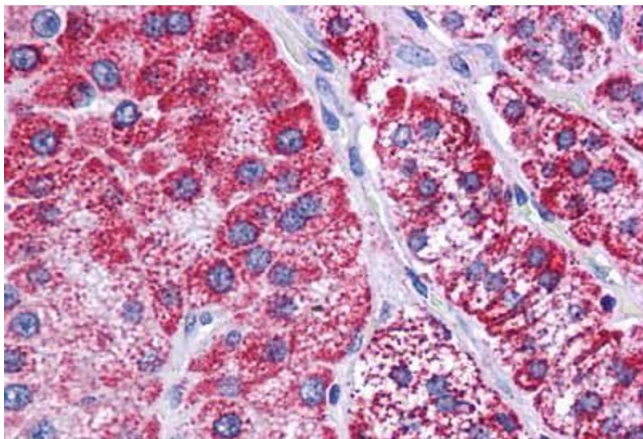
Buffer: Lyophilized from PBS with 2 % sucrose

Handling Advice: Avoid repeat freeze-thaw cycles.

Handling

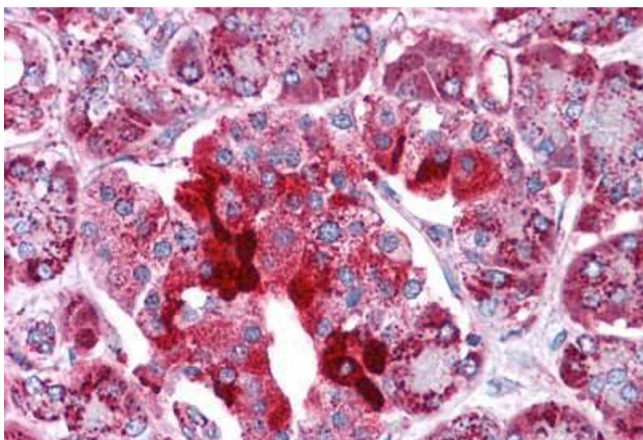
Storage:	4 °C,-20 °C
Storage Comment:	Long term: -20°C, the use of 50% glycerol is recommended if storing aliquots in -20°C for long term use (up to 1 year) Short term (less than 1 week): 4°C. Avoid freeze-thaw cycles.

Images



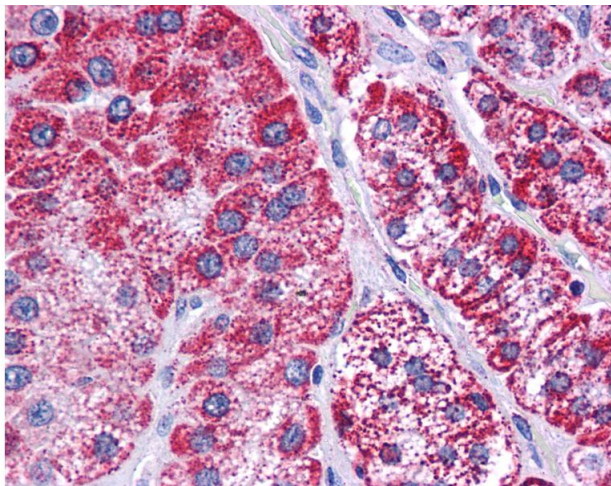
Immunohistochemistry (Formalin-fixed Paraffin-embedded Sections)

Image 1. Human Adrenal: Formalin-Fixed, Paraffin-Embedded (FFPE)



Immunohistochemistry (Formalin-fixed Paraffin-embedded Sections)

Image 2. Human Pancreas: Formalin-Fixed, Paraffin-Embedded (FFPE)



Immunohistochemistry

Image 3. Anti-HADHB antibody IHC of human adrenal. Immunohistochemistry of formalin-fixed, paraffin-embedded tissue after heat-induced antigen retrieval. Antibody concentration 5 ug/ml. This image was taken for the unconjugated form of this product. Other fo ...