

Datasheet for ABIN604807

## anti-SLAIN1 antibody (C-Term)

### 3 Images



[Go to Product page](#)

### Overview

Quantity:	0.05 mg
Target:	SLAIN1
Binding Specificity:	C-Term
Reactivity:	Human
Host:	Rabbit
Clonality:	Polyclonal
Conjugate:	This SLAIN1 antibody is un-conjugated
Application:	Immunohistochemistry (IHC), Immunohistochemistry (Paraffin-embedded Sections) (IHC (p))

### Product Details

Brand:	IHC-plus™
Isotype:	IgG
Specificity:	At least three isoforms of SLAIN1 are known to exist, this antibody will detect only the largest isoform. SLAIN1 antibody is predicted not to cross-react with SLAIN2.
Purification:	Immunoaffinity purified

### Target Details

Target:	SLAIN1
Alternative Name:	SLAIN1 ( <a href="#">SLAIN1 Products</a> )
Background:	Name/Gene ID: SLAIN1

## Target Details

---

Synonyms: SLAIN1, C13orf32, SLAIN motif family, member 1

Gene ID: 122060

UniProt: [Q8ND83](#)

## Application Details

---

Application Notes: Approved: IHC, IHC-P (5 µg/mL)

Comment: Target Species of Antibody: Human

Restrictions: For Research Use only

## Handling

---

Format: Liquid

Concentration: Lot specific

Buffer: PBS, 0.02 % sodium azide.

Preservative: Sodium azide

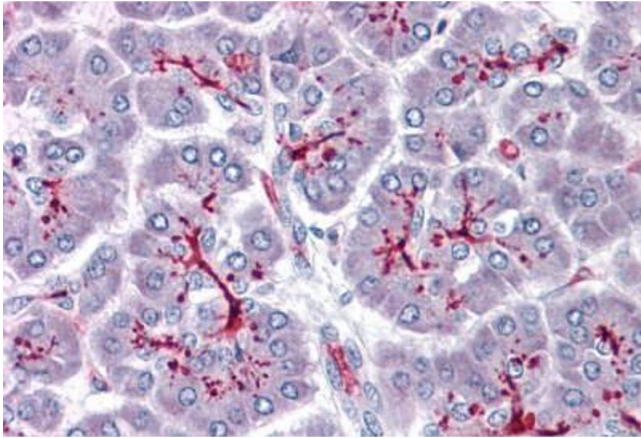
Precaution of Use: This product contains Sodium azide: a POISONOUS AND HAZARDOUS SUBSTANCE which should be handled by trained staff only.

Handling Advice: avoid freeze thaw cycles. Store undiluted.

Storage: 4 °C, -20 °C

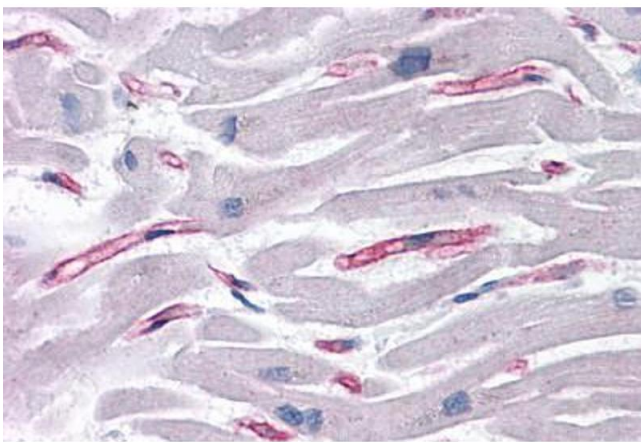
Storage Comment: Store at 4°C for 3 months and -20°C, stable for up to 1 year. Avoid repeated freeze-thaw cycles.

Expiry Date: 12 months



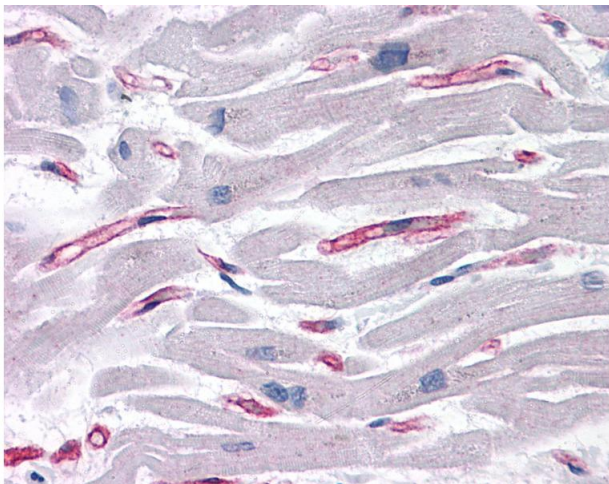
### Immunohistochemistry (Formalin-fixed Paraffin-embedded Sections)

**Image 1.** Human Pancreas: Formalin-Fixed, Paraffin-Embedded (FFPE)



### Immunohistochemistry (Formalin-fixed Paraffin-embedded Sections)

**Image 2.** Human Heart: Formalin-Fixed, Paraffin-Embedded (FFPE)



### Immunohistochemistry

**Image 3.** Anti-SLAIN1 antibody IHC of human heart. Immunohistochemistry of formalin-fixed, paraffin-embedded tissue after heat-induced antigen retrieval. Antibody concentration 5 ug/ml.