

Datasheet for ABIN604836
anti-Histone H4 antibody (acLys12)



[Go to Product page](#)

3 Images

Overview

Quantity:	50 µL
Target:	Histone H4
Binding Specificity:	acLys12
Reactivity:	Human, Mouse, Rat, Monkey
Host:	Rabbit
Clonality:	Polyclonal
Conjugate:	This Histone H4 antibody is un-conjugated
Application:	Western Blotting (WB), Immunohistochemistry (IHC), Immunofluorescence (IF), ELISA, Immunohistochemistry (Paraffin-embedded Sections) (IHC (p))

Product Details

Brand:	IHC-plus™
Immunogen:	Synthetic acetylpeptide (KLH coupled) corresponding to residues surrounding Lys12 of human histone H4. Type of Immunogen: Synthetic peptide
Isotype:	IgG
Specificity:	Recognizes endogenous levels of human histone H4 acetylated at Lys12. It does not cross-react with other acetylated histones. Species cross-reactivity: Monkey, mouse and rat. Note: Adherence to the attached protocol is extremely important.
Purification:	Protein A purified

Target Details

Target: Histone H4

Abstract: [Histone H4 Products](#)

Application Details

Application Notes: Approved: ELISA, IF, IHC, IHC-P (1:100), WB (1:1000)

Usage: Suitable for use in ELISA, Western Blot, Immunofluorescence and Immunohistochemistry. Western Blot: 1:1000. Immunohistochemistry (Paraffin): 1:100. Immunofluorescence (IF-IC): 1:1600.

Comment: Target Species of Antibody: Human

Restrictions: For Research Use only

Handling

Format: Liquid

Concentration: Lot specific

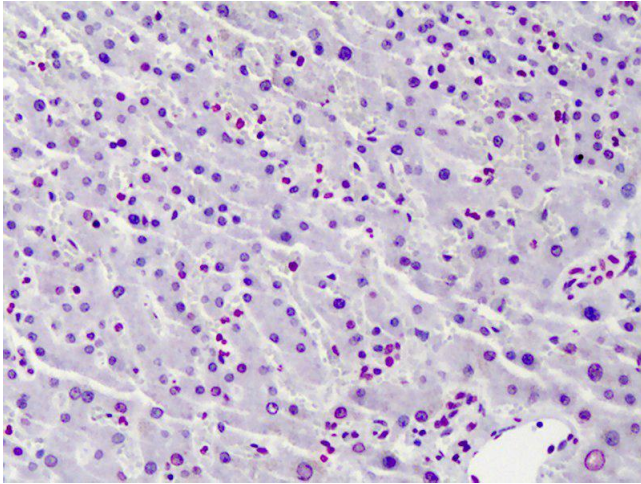
Buffer: 10 mM HEPES, pH 7.5, 150 mM sodium chloride, 0.1 mg/mL BSA, 50 % glycerol. No preservative added.

Preservative: Without preservative

Handling Advice: avoid freeze thaw cycles.

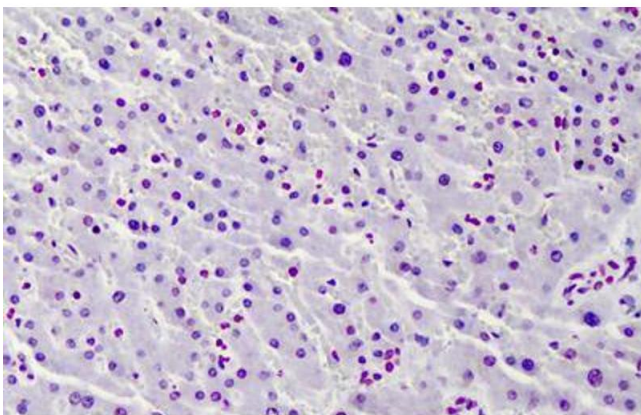
Storage: 4 °C, -20 °C

Storage Comment: Short term 4°C, long term aliquot and store at -20°C, avoid freeze-thaw cycles.



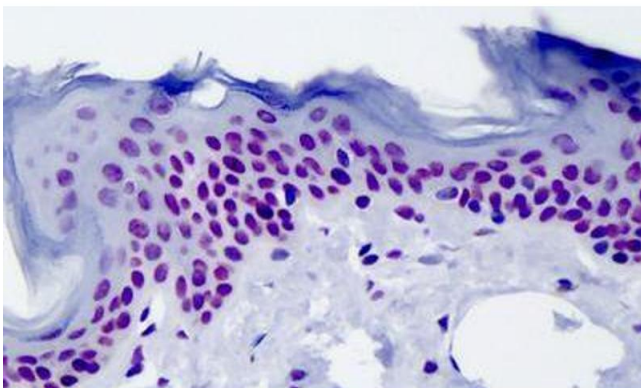
Immunohistochemistry

Image 1. Anti-Histone H4 antibody IHC of human liver. Immunohistochemistry of formalin-fixed, paraffin-embedded tissue after heat-induced antigen retrieval. Antibody dilution 1:100.



Immunohistochemistry (Formalin-fixed Paraffin-embedded Sections)

Image 2. Human Liver: Formalin-Fixed, Paraffin-Embedded (FFPE)



Immunohistochemistry (Formalin-fixed Paraffin-embedded Sections)

Image 3. Human Skin Formalin-Fixed, Paraffin-Embedded (FFPE)