



[Go to Product page](#)

Datasheet for ABIN604849
anti-Vinculin antibody

3 Images

Overview

Quantity:	50 µL
Target:	Vinculin (VCL)
Reactivity:	Human
Host:	Mouse
Clonality:	Monoclonal
Conjugate:	This Vinculin antibody is un-conjugated
Application:	Western Blotting (WB), Immunohistochemistry (IHC), Immunofluorescence (IF), Immunohistochemistry (Paraffin-embedded Sections) (IHC (p)), Immunoprecipitation (IP)

Product Details

Brand:	IHC-plus™
Immunogen:	Semi-purified vinculin. MW of Antigen: 130kD (vinculin) and 150kD (meta-vinculin). Cellular Localization: Cell membrane and cytoplasmic. Type of Immunogen: Protein extract
Isotype:	IgG1
Specificity:	Recognizes human vinculin.
Purification:	Protein G purified

Target Details

Target:	Vinculin (VCL)
---------	----------------

Target Details

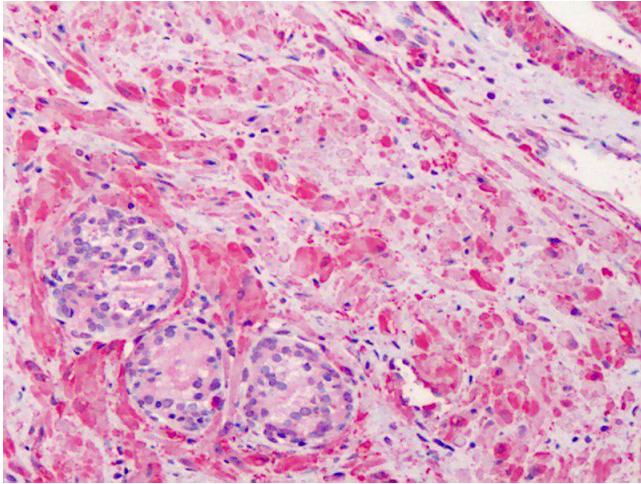
Alternative Name:	VCL / Vinculin (VCL Products)
Background:	Name/Gene ID: VCL Family: Cytoskeleton Synonyms: VCL, CMD1W, CMH15, Metavinculin, Vinculin, MVCL
Gene ID:	7414
UniProt:	P18206
Pathways:	Cell-Cell Junction Organization , Maintenance of Protein Location , Signaling Events mediated by VEGFR1 and VEGFR2

Application Details

Application Notes:	Approved: IF, IHC, IHC-P (2.5 - 5 µg/mL), IP, WB (1 - 2 µg/mL) Usage: Suitable for use in Immunofluorescence, Western Blot, Immunoprecipitation, Immunohistochemistry and Studies of vinculin in platelet activation. Immunoprecipitation (Denatured): 2 µg/mg protein lysate (Use Protein G). Western Blot: 1-2 µg/mL for 2hrs at RT. Staining of formalin/paraffin tissues requires boiling tissue sections in 10 mM citrate buffer, pH 6.0, for 10-20 min followed by cooling at RT for 20 min. The applications listed have been tested for the unmodified form of this product. Other forms have not been tested.
Comment:	Target Species of Antibody: Human
Restrictions:	For Research Use only

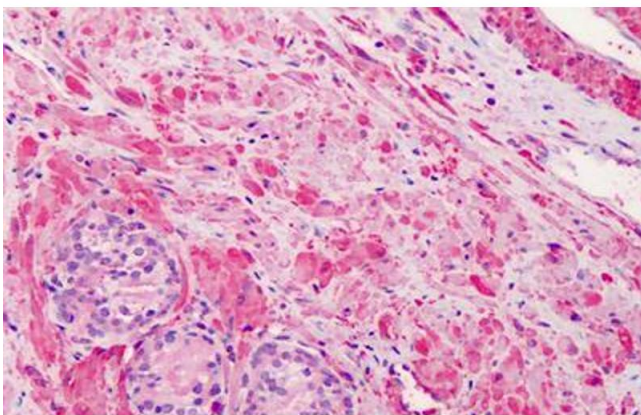
Handling

Format:	Liquid
Concentration:	Lot specific
Buffer:	PBS, pH 7.4. No preservatives or stabilizing proteins added.
Preservative:	Azide free
Handling Advice:	avoid freeze thaw cycles.
Storage:	4 °C, -20 °C
Storage Comment:	Short term 4°C, long term aliquot and store at -20°C, avoid freeze-thaw cycles.



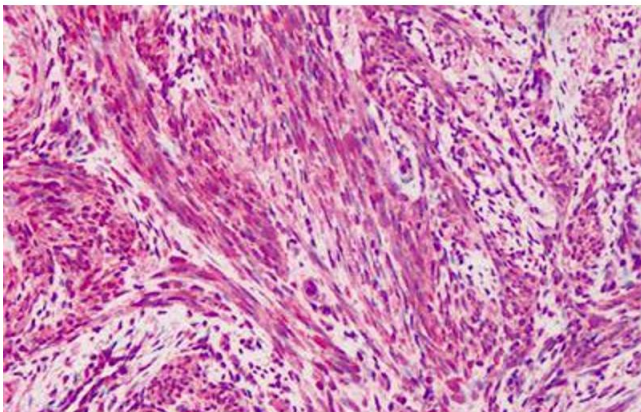
Immunohistochemistry

Image 1. Anti-Vinculin antibody IHC of human prostate. Immunohistochemistry of formalin-fixed, paraffin-embedded tissue after heat-induced antigen retrieval. Antibody concentration 2.5 ug/ml. This image was taken for the unmodified form of this product. Other ...



Immunohistochemistry (Formalin-fixed Paraffin-embedded Sections)

Image 2. Human Prostate: Formalin-Fixed, Paraffin-Embedded (FFPE)



Immunohistochemistry (Formalin-fixed Paraffin-embedded Sections)

Image 3. Human Muscle: Formalin-Fixed, Paraffin-Embedded (FFPE)