



Datasheet for ABIN604869  
**anti-APEX1 antibody**



[Go to Product page](#)

3 Images

Overview

Quantity:	50 µL
Target:	APEX1
Reactivity:	Human
Host:	Rabbit
Clonality:	Polyclonal
Application:	Western Blotting (WB), Immunohistochemistry (IHC), Immunohistochemistry (Paraffin-embedded Sections) (IHC (p))

Product Details

Brand:	IHC-plus™
Immunogen:	Type of Immunogen: Native protein
Isotype:	IgG
Specificity:	Full length human APE1 purified from E. coli.

Target Details

Target:	APEX1
Alternative Name:	APEX1 / APE1 ( <a href="#">APEX1 Products</a> )
Background:	Name/Gene ID: APEX1

## Target Details

---

Synonyms: APEX1, AP endonuclease class I, AP lyase, APE, APE-1, APEN, APE1, APEX nuclease, Redox factor-1, AP endonuclease 1, APEX, APX, Protein REF-1, REF-1, REF1

Gene ID: 328

UniProt: [P27695](#)

Pathways: [DNA Damage Repair](#), [Chromatin Binding](#), [Cell RedoxHomeostasis](#), [Smooth Muscle Cell Migration](#), [Positive Regulation of Response to DNA Damage Stimulus](#)

## Application Details

---

Application Notes: Approved: IHC, IHC-P (1:100), WB

Comment: Target Species of Antibody: Human

Restrictions: For Research Use only

## Handling

---

Format: Liquid

Concentration: Lot specific

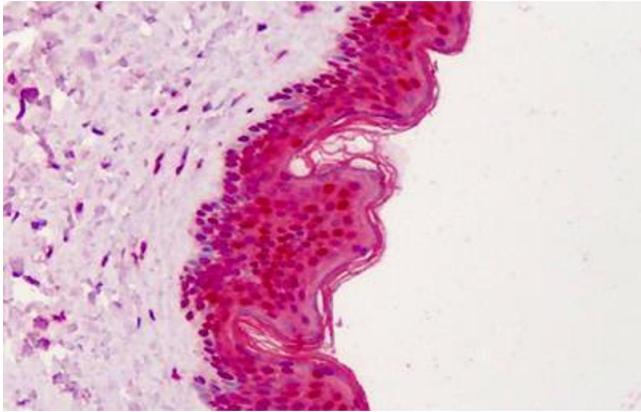
Buffer: Antiserum, no preservative

Preservative: Without preservative

Handling Advice: Aliquot to Avoid repeated freezing and thawing.

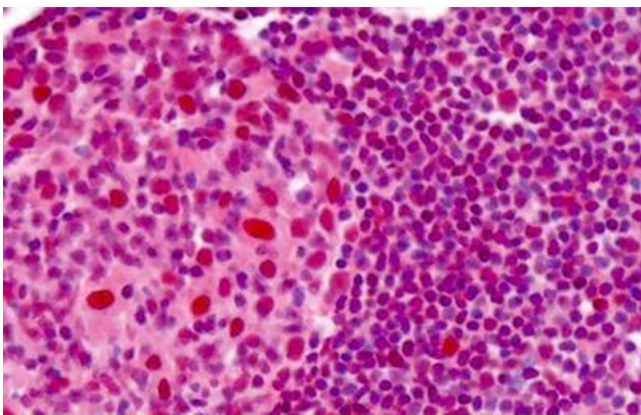
Storage: -20 °C

Storage Comment: Store at -20°C or lower. Aliquot to avoid freeze-thaw cycles.



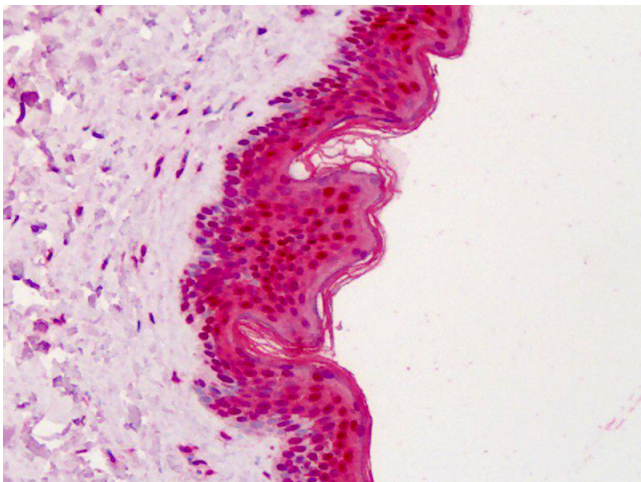
### Immunohistochemistry (Formalin-fixed Paraffin-embedded Sections)

**Image 1.** Human Skin: Formalin-Fixed, Paraffin-Embedded (FFPE)



### Immunohistochemistry (Formalin-fixed Paraffin-embedded Sections)

**Image 2.** Human Tonsil: Formalin-Fixed, Paraffin-Embedded (FFPE)



### Immunohistochemistry

**Image 3.** Anti-APEX1 / APE1 antibody IHC of human skin. Immunohistochemistry of formalin-fixed, paraffin-embedded tissue after heat-induced antigen retrieval. Antibody dilution 1:100.