



[Go to Product page](#)

Datasheet for ABIN604885

anti-TM7 antibody

3 Images

Overview

Quantity:	50 µL
Target:	TM7
Reactivity:	Human, Mouse
Host:	Rabbit
Clonality:	Polyclonal
Conjugate:	This TM7 antibody is un-conjugated
Application:	Western Blotting (WB), Immunohistochemistry (IHC), Immunohistochemistry (Paraffin-embedded Sections) (IHC (p))

Product Details

Brand:	IHC-plus™
Immunogen:	Recombinant protein fragment containing a sequence corresponding to a region within amino acids 92 - 283 of Human Tropomyosin 1. Type of Immunogen: Recombinant protein
Specificity:	Human Tropomyosin 1. Predicted cross-reactivity based on amino acid sequence homology: mouse (99 %), rat (88 %), rabbit (88 %), bovine (88 %), pig (88 %).
Purification:	Immunoaffinity purified

Target Details

Target:	TM7
---------	-----

Target Details

Alternative Name: TPM1 / Tropomyosin ([TM7 Products](#))

Background: Name/Gene ID: TPM1

Synonyms: TPM1, Alpha-tropomyosin, C15orf13, Cardiomyopathy, hypertrophic 3, CMD1Y, CMH3, HTM-alpha, Sarcomeric tropomyosin kappa, TMSA, Tropomyosin, Tropomyosin 1 (alpha), Tropomyosin alpha-1 chain, Tropomyosin-1

Gene ID: 7168

UniProt: [P09493](#)

Application Details

Application Notes: Approved: IHC, IHC-P (10 µg/mL), WB

Comment: Target Species of Antibody: Human

Restrictions: For Research Use only

Handling

Format: Liquid

Concentration: Lot specific

Buffer: 0.1 M Tris-glycine, pH 7, 20 % Glycerol, 0.01 % Thimerosal

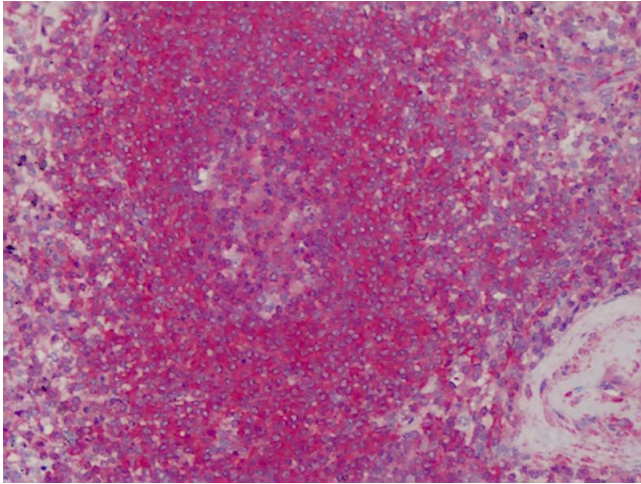
Preservative: Thimerosal (Merthiolate)

Precaution of Use: This product contains Thimerosal (Merthiolate): a POISONOUS AND HAZARDOUS SUBSTANCE which should be handled by trained staff only.

Handling Advice: Minimize freezing and thawing.

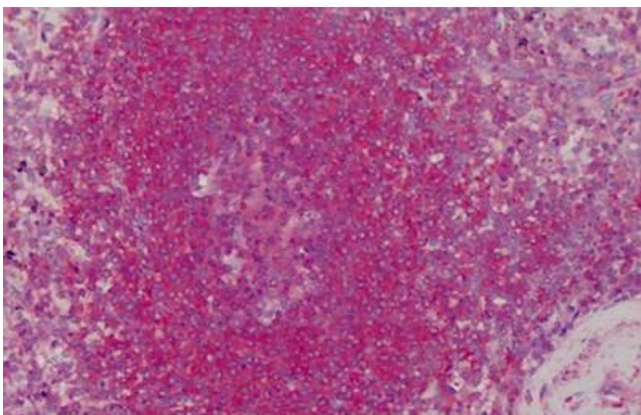
Storage: -20 °C

Storage Comment: Aliquot and store at -20°C. Avoid freeze-thaw cycles.



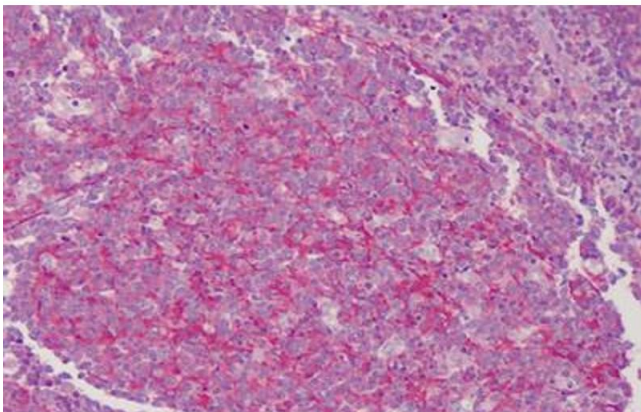
Immunohistochemistry

Image 1. Anti-Tropomyosin 1 antibody IHC of human spleen. Immunohistochemistry of formalin-fixed, paraffin-embedded tissue after heat-induced antigen retrieval. Antibody concentration 10 ug/ml.



Immunohistochemistry (Formalin-fixed Paraffin-embedded Sections)

Image 2. Human Spleen: Formalin-Fixed, Paraffin-Embedded (FFPE)



Immunohistochemistry (Formalin-fixed Paraffin-embedded Sections)

Image 3. Human Tonsil: Formalin-Fixed, Paraffin-Embedded (FFPE)