

Datasheet for ABIN604893  
**anti-CD147 antibody (N-Term)**[Go to Product page](#)

## 3 Images

## Overview

Quantity:	50 µg
Target:	CD147 (BSG)
Binding Specificity:	N-Term
Reactivity:	Human
Host:	Rabbit
Clonality:	Polyclonal
Conjugate:	This CD147 antibody is un-conjugated
Application:	Western Blotting (WB), Immunohistochemistry (IHC), ELISA, Immunohistochemistry (Paraffin-embedded Sections) (IHC (p))

## Product Details

Brand:	IHC-plus™
Immunogen:	Synthetic peptide derived from the N-terminal region of the human EMMPRIN protein.  Type of Immunogen: Synthetic peptide
Specificity:	Reacts with human EMMPRIN. On Western blots, both the glycosylated (~55kD) and the non-glycosylated (30 kD) forms of EMMPRIN are identified. Reactivity is confirmed with human breast cancer BT-20 and colon cancer SW480 cell lines.
Purification:	Immunoaffinity purified

## Target Details

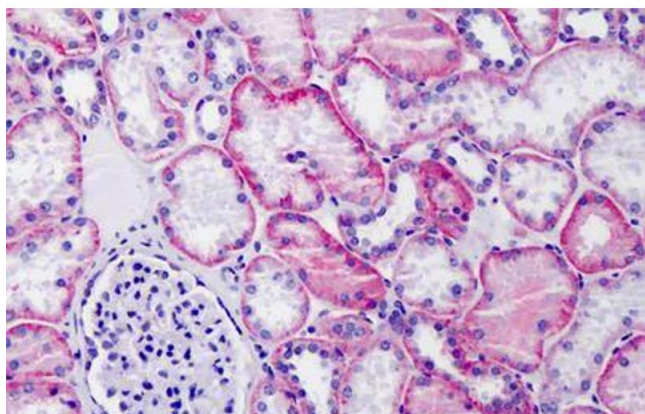
Target:	CD147 (BSG)
Alternative Name:	Basigin / Emmprin / CD147 ( <a href="#">BSG Products</a> )
Background:	Name/Gene ID: BSG  Synonyms: BSG, 5F7, Basigin, Basigin (Ok blood group), CD147 antigen, Collagenase stimulatory factor, EMMPRIN, OK, OK blood group antigen, TCSF, CD147, M6
Gene ID:	682
UniProt:	<a href="#">P35613</a>
Pathways:	<a href="#">S100 Proteins</a>

## Application Details

Application Notes:	Approved: ELISA (0.1 - 1 µg/mL), IHC, IHC-P (5 µg/mL), WB (1 - 5 µg/mL)  Usage: Suitable for use in ELISA, Western Blot and Immunohistochemistry. ELISA: 0.1-1.0 µg/mL. Western Blot: 1-5 µg/mL. Immunohistochemistry: 10 µg/mL Heat induced epitope retrieval (HIER) with EDTA, pH 8.0, is required prior to IHC staining.
Comment:	Target Species of Antibody: Human
Restrictions:	For Research Use only

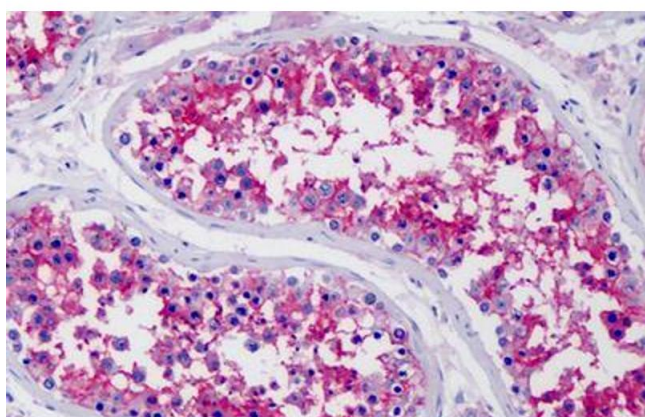
## Handling

Format:	Liquid
Concentration:	Lot specific
Buffer:	PBS, pH 7.4, 0.1 % sodium azide
Preservative:	Sodium azide
Precaution of Use:	This product contains Sodium azide: a POISONOUS AND HAZARDOUS SUBSTANCE which should be handled by trained staff only.
Handling Advice:	avoid freeze thaw cycles.
Storage:	4 °C,-20 °C
Storage Comment:	Short term 4°C, long term aliquot and store at -20°C, avoid freeze-thaw cycles.



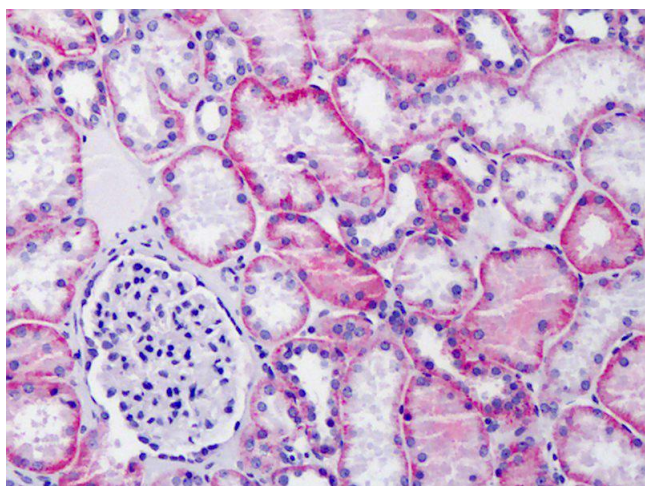
#### Immunohistochemistry (Formalin-fixed Paraffin-embedded Sections)

**Image 1.** Human Kidney: Formalin-Fixed, Paraffin-Embedded (FFPE)



#### Immunohistochemistry (Formalin-fixed Paraffin-embedded Sections)

**Image 2.** Human Testis: Formalin-Fixed, Paraffin-Embedded (FFPE)



#### Immunohistochemistry

**Image 3.** Anti-CD147 antibody IHC of human kidney. Immunohistochemistry of formalin-fixed, paraffin-embedded tissue after heat-induced antigen retrieval. Antibody concentration 5 ug/ml.