



[Go to Product page](#)

Datasheet for ABIN604898
anti-RAGE antibody (Cy3)

3 Images

Overview

Quantity:	50 µg
Target:	RAGE (AGER)
Reactivity:	Human, Cow
Host:	Mouse
Clonality:	Monoclonal
Conjugate:	This RAGE antibody is conjugated to Cy3
Application:	Western Blotting (WB), Immunohistochemistry (IHC), ELISA, Immunohistochemistry (Paraffin-embedded Sections) (IHC (p)), Immunocytochemistry (ICC)

Product Details

Brand:	IHC-plus™
Immunogen:	Recombinant truncated extracellular portion of human RAGE expressed in E. coli. Type of Immunogen: Recombinant protein
Clone:	DD-A11
Isotype:	IgG2a
Specificity:	Recognizes both natural and recombinant RAGE. Species cross-reactivity: Human and bovine.
Purification:	Protein A purified

Target Details

Target:	RAGE (AGER)
---------	-------------

Target Details

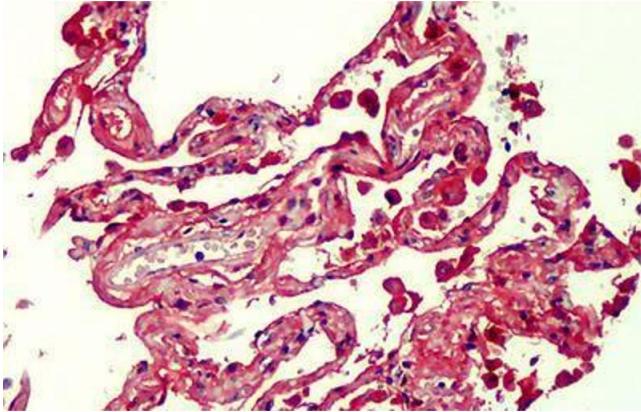
Alternative Name:	AGER / RAGE (AGER Products)
Background:	Name/Gene ID: AGER Synonyms: AGER, RAGE, RAGE isoform NtRAGE-delta, RAGE isoform sRAGE-delta
Gene ID:	177
UniProt:	Q15109
Pathways:	Carbohydrate Homeostasis , Toll-Like Receptors Cascades , Smooth Muscle Cell Migration , S100 Proteins

Application Details

Application Notes:	Approved: ELISA, ICC, IHC, IHC-P (10 µg/mL), WB (1:250) Usage: Suitable for use in Western Blot, Immunohistochemistry, Immunocytochemistry and ELISA. Western Blot: 1:250. ~48kD band in mouse brain lysates. Immunohistochemistry: Paraffin embedded tissue sections. Immunocytochemistry: Cells fixed with ice cold acetone using a secondary antibody labeled with Cy3. ELISA: Direct. The applications listed have been tested for the unconjugated form of this product. Other forms have not been tested.
Comment:	Target Species of Antibody: Human
Restrictions:	For Research Use only

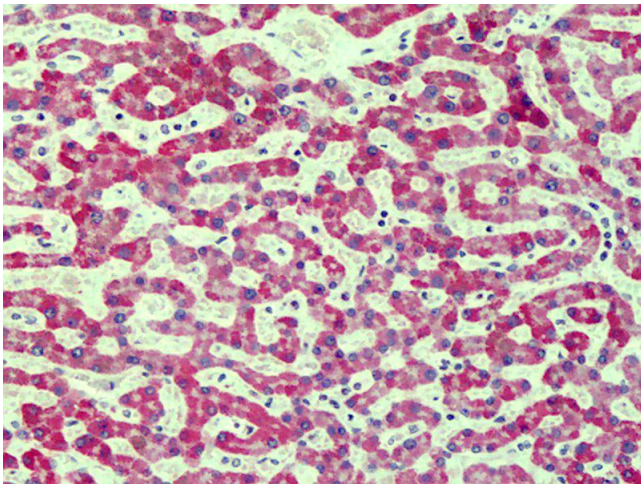
Handling

Format:	Liquid
Concentration:	Lot specific
Buffer:	PBS, 0.1 % sodium azide
Preservative:	Sodium azide
Precaution of Use:	This product contains Sodium azide: a POISONOUS AND HAZARDOUS SUBSTANCE which should be handled by trained staff only.
Handling Advice:	avoid freeze thaw cycles.
Storage:	4 °C,-20 °C
Storage Comment:	Short term 4°C, long term aliquot and store at -20°C, avoid freeze-thaw cycles.



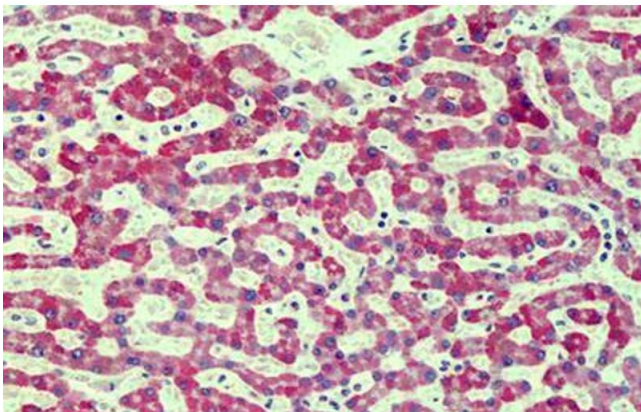
Immunohistochemistry (Formalin-fixed Paraffin-embedded Sections)

Image 1. Human Lung: Formalin-Fixed, Paraffin-Embedded (FFPE)



Immunohistochemistry

Image 2. Anti-RAGE antibody IHC of human liver. Immunohistochemistry of formalin-fixed, paraffin-embedded tissue after heat-induced antigen retrieval. Antibody concentration 10 ug/ml. This image was taken for the unconjugated form of this product. Other forms ...



Immunohistochemistry (Formalin-fixed Paraffin-embedded Sections)

Image 3. Human Liver: Formalin-Fixed, Paraffin-Embedded (FFPE)