



[Go to Product page](#)

Datasheet for ABIN604928

anti-Retinoblastoma Binding Protein 8 antibody (AA 452-747)

3 Images

Overview

Quantity:	50 µL
Target:	Retinoblastoma Binding Protein 8 (RBBP8)
Binding Specificity:	AA 452-747
Reactivity:	Human
Host:	Rabbit
Clonality:	Polyclonal
Conjugate:	This Retinoblastoma Binding Protein 8 antibody is un-conjugated
Application:	Western Blotting (WB), Immunohistochemistry (IHC), Immunohistochemistry (Paraffin-embedded Sections) (IHC (p))

Product Details

Brand:	IHC-plus™
Immunogen:	Recombinant protein fragment containing a sequence corresponding to a region within amino acids 452 and 747 of CtIP. Type of Immunogen: Recombinant protein
Specificity:	Human CtIP.
Purification:	Immunoaffinity purified

Target Details

Target:	Retinoblastoma Binding Protein 8 (RBBP8)
---------	--

Target Details

Alternative Name: RBBP8 / CTIP ([RBBP8 Products](#))

Background: Name/Gene ID: RBBP8

Synonyms: RBBP8, CTIP, DNA endonuclease RBBP8, RIM, SAE2, COM1, CtBP-interacting protein, JWDS, RBBP-8, SCKL2, Seckel syndrome 2

Gene ID: 5932

UniProt: [Q99708](#)

Pathways: [Cell Division Cycle](#), [DNA Damage Repair](#)

Application Details

Application Notes: Approved: IHC, IHC-P (10 µg/mL), WB (1:1000 - 1:10000)

Comment: Target Species of Antibody: Human

Restrictions: For Research Use only

Handling

Format: Liquid

Concentration: Lot specific

Buffer: 0.1 M Tris-glycine, pH 7, 10 % Glycerol, 0.01 % Thimerosal

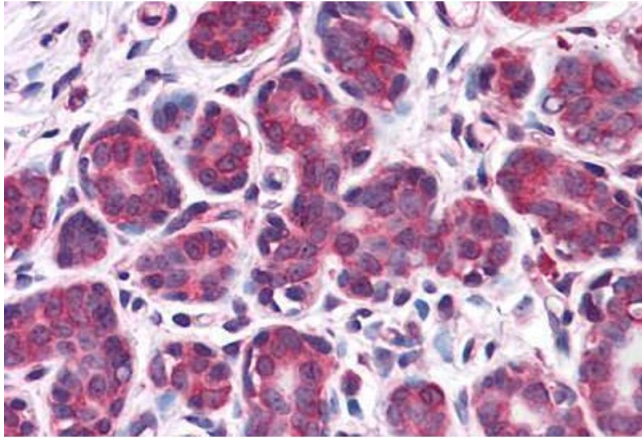
Preservative: Thimerosal (Merthiolate)

Precaution of Use: This product contains Thimerosal (Merthiolate): a POISONOUS AND HAZARDOUS SUBSTANCE which should be handled by trained staff only.

Handling Advice: Minimize freezing and thawing.

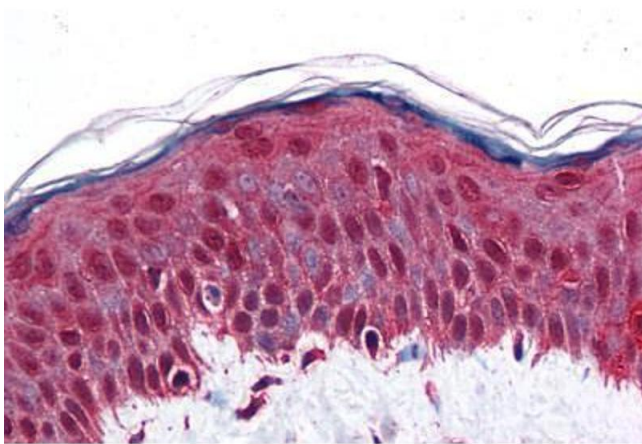
Storage: -20 °C

Storage Comment: Aliquot and store at -20°C. Avoid freeze-thaw cycles.



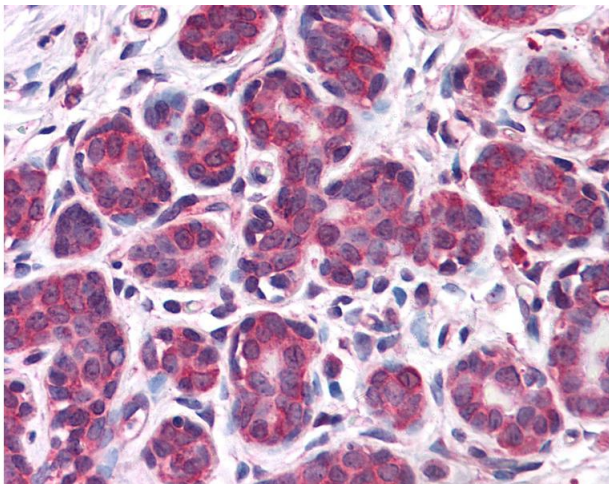
Immunohistochemistry (Formalin-fixed Paraffin-embedded Sections)

Image 1. Human Breast: Formalin-Fixed, Paraffin-Embedded (FFPE)



Immunohistochemistry (Formalin-fixed Paraffin-embedded Sections)

Image 2. Human Skin: Formalin-Fixed, Paraffin-Embedded (FFPE)



Immunohistochemistry

Image 3. Anti-RBBP8 / CTIP antibody IHC of human breast. Immunohistochemistry of formalin-fixed, paraffin-embedded tissue after heat-induced antigen retrieval. Antibody concentration 10 ug/ml.