

Datasheet for ABIN604967

anti-CD147 antibody**3** Images[Go to Product page](#)

Overview

Quantity:	50 µg
Target:	CD147 (BSG)
Reactivity:	Mouse
Host:	Rat
Clonality:	Monoclonal
Conjugate:	This CD147 antibody is un-conjugated
Application:	Western Blotting (WB), Flow Cytometry (FACS), Immunohistochemistry (IHC), Immunohistochemistry (Paraffin-embedded Sections) (IHC (p)), Immunohistochemistry (Frozen Sections) (IHC (fro))

Product Details

Brand:	IHC-plus™
Immunogen:	Fusion protein mCD147dO-2rCD4d3 +4. Type of Immunogen: Fusion protein
Isotype:	IgG1
Specificity:	Recognizes mouse CD147 (also known as basigin). Clone recognizes both isoforms of CD147, the common form containing 2 Ig-like domains and the rare form containing 3 Ig-like domains.
Purification:	Protein G purified

Target Details

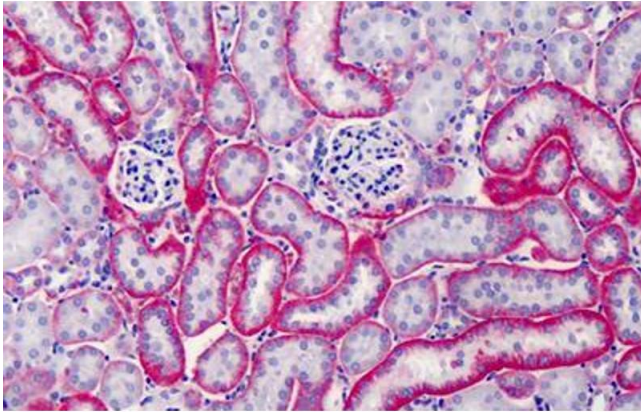
Target:	CD147 (BSG)
Alternative Name:	Basigin / Emmprin / CD147 (BSG Products)
Background:	Name/Gene ID: BSG Synonyms: BSG, 5F7, Basigin, Basigin (Ok blood group), CD147 antigen, Collagenase stimulatory factor, EMMPRIN, OK, OK blood group antigen, TCSF, CD147, M6
Gene ID:	682
UniProt:	P35613
Pathways:	S100 Proteins

Application Details

Application Notes:	Approved: Flo (1:25 - 1:50), IHC, IHC-Fr, IHC-P (10 µg/mL), WB Usage: Suitable for use in Flow Cytometry, Immunohistochemistry and Western Blot. Flow Cytometry: 1:25-1:50, Use 10 µL to label 1 x10 ⁶ in 100 µL. Antibody is routinely tested in FC on mouse splenocytes. Note that for staining of whole blood samples, increased amounts of antibody may be required due to the presence of CD147 on erythrocytes.
Comment:	Target Species of Antibody: Mouse
Restrictions:	For Research Use only

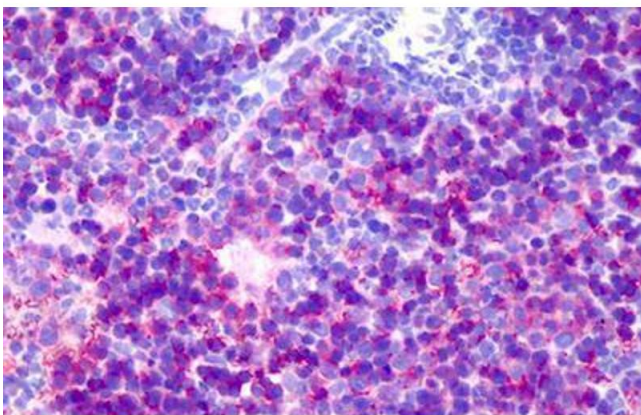
Handling

Format:	Liquid
Concentration:	Lot specific
Buffer:	PBS, pH 7.4, 0.09 % sodium azide.
Preservative:	Sodium azide
Precaution of Use:	This product contains Sodium azide: a POISONOUS AND HAZARDOUS SUBSTANCE which should be handled by trained staff only.
Handling Advice:	Avoid freeze-thaw cycles.
Storage:	4 °C,-20 °C
Storage Comment:	Short term: 4°C. Long term: Store at -20°C. Avoid freeze-thaw cycles.



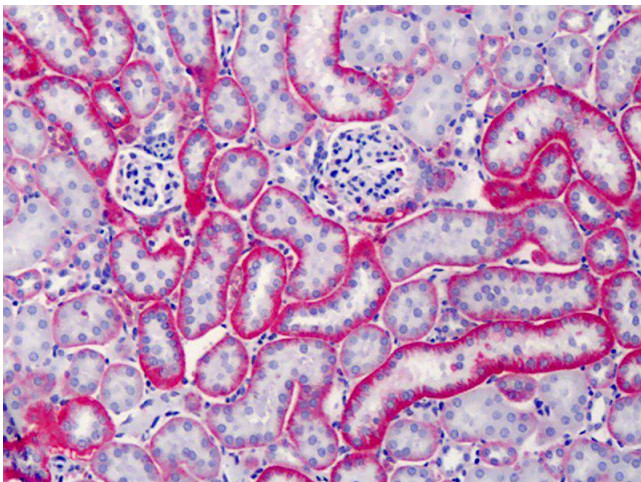
Immunohistochemistry (Formalin-fixed Paraffin-embedded Sections)

Image 1. Mouse Kidney: Formalin-Fixed, Paraffin-Embedded (FFPE)



Immunohistochemistry (Formalin-fixed Paraffin-embedded Sections)

Image 2. Mouse Spleen: Formalin-Fixed, Paraffin-Embedded (FFPE)



Immunohistochemistry

Image 3. Anti-CD147 antibody IHC of mouse kidney. Immunohistochemistry of formalin-fixed, paraffin-embedded tissue after heat-induced antigen retrieval. Antibody concentration 10 ug/ml.