

Datasheet for ABIN605060
anti-GRTP1 antibody (Internal Region)[Go to Product page](#)

2 Images

Overview

Quantity:	0.05 mg
Target:	GRTP1
Binding Specificity:	Internal Region
Reactivity:	Human, Mouse, Rat
Host:	Rabbit
Clonality:	Polyclonal
Conjugate:	This GRTP1 antibody is un-conjugated
Application:	Western Blotting (WB), Immunohistochemistry (IHC), Immunohistochemistry (Paraffin-embedded Sections) (IHC (p))

Product Details

Brand:	IHC-plus™
Isotype:	IgG
Specificity:	At least three isoforms of GRTP1 are known to exist, this antibody should recognize all isoforms.
Purification:	Immunoaffinity purified

Target Details

Target:	GRTP1
Alternative Name:	GRTP1 (GRTP1 Products)

Target Details

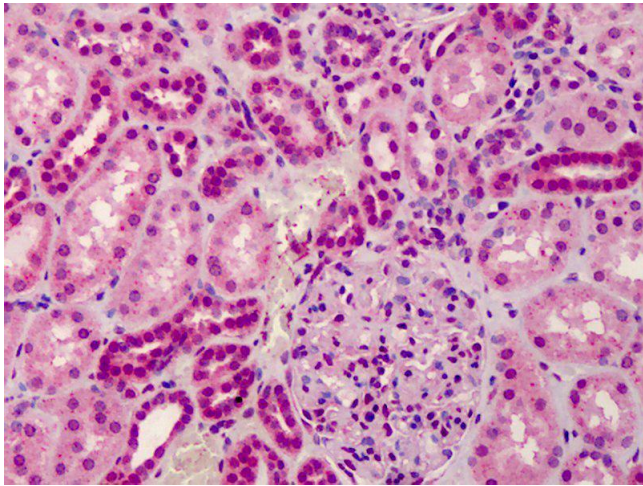
Background:	Name/Gene ID: GRTP1 Synonyms: GRTP1, TBC1 domain family, member 6, TBC1D6, TBC1 domain family member 6
Gene ID:	79774
UniProt:	Q5TC63

Application Details

Application Notes:	Approved: IHC, IHC-P (5 µg/mL), WB (1 - 2 µg/mL) Usage: GRTP1 antibody can be used for detection of GRTP1 by Western blot at 1-2 µg/mL
Comment:	Target Species of Antibody: Human
Restrictions:	For Research Use only

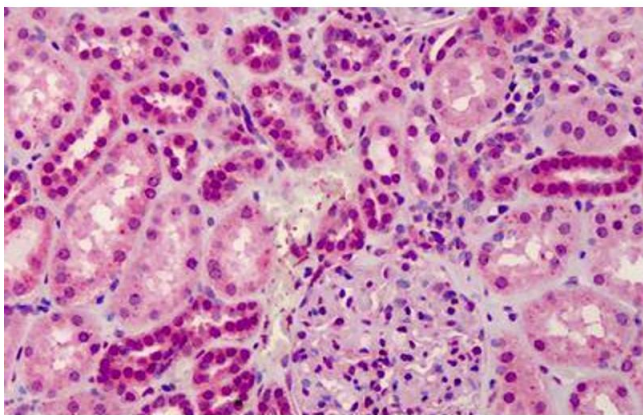
Handling

Format:	Liquid
Concentration:	Lot specific
Buffer:	PBS, 0.02 % sodium azide
Preservative:	Sodium azide
Precaution of Use:	This product contains Sodium azide: a POISONOUS AND HAZARDOUS SUBSTANCE which should be handled by trained staff only.
Handling Advice:	avoid freeze thaw cycles. Store undiluted.
Storage:	4 °C, -20 °C
Storage Comment:	Store at 4°C for 3 months and -20°C, stable for up to 1 year. Avoid repeated freeze-thaw cycles.
Expiry Date:	12 months



Immunohistochemistry

Image 1. Anti-GRTP1 antibody IHC of human kidney. Immunohistochemistry of formalin-fixed, paraffin-embedded tissue after heat-induced antigen retrieval. Antibody concentration 5 ug/ml.



Immunohistochemistry (Formalin-fixed Paraffin-embedded Sections)

Image 2. Human Kidney: Formalin-Fixed, Paraffin-Embedded (FFPE)