



[Go to Product page](#)

Datasheet for ABIN605091

## anti-ZCRB1 antibody (C-Term)

### 2 Images

#### Overview

Quantity:	0.05 mg
Target:	ZCRB1
Binding Specificity:	C-Term
Reactivity:	Human, Mouse, Rat
Host:	Rabbit
Clonality:	Polyclonal
Conjugate:	This ZCRB1 antibody is un-conjugated
Application:	Western Blotting (WB), ELISA, Immunohistochemistry (IHC), Immunohistochemistry (Paraffin-embedded Sections) (IHC (p))

#### Product Details

Brand:	IHC-plus™
Isotype:	IgG
Purification:	Immunoaffinity purified

#### Target Details

Target:	ZCRB1
Alternative Name:	ZCRB1 ( <a href="#">ZCRB1 Products</a> )
Background:	Name/Gene ID: ZCRB1

Synonyms: ZCRB1, SNRNP31, ZCCHC19, U11/U12 snRNP 31K, RBM36, MADP-1, MADP1,

## Target Details

---

U11/U12 snRNP 31 kDa protein, U11/U12-31K

Gene ID: 85437

UniProt: [Q8TBF4](#)

## Application Details

---

Application Notes: Approved: ELISA, IHC, IHC-P (10 µg/mL), WB (1 - 2 µg/mL)

Usage: ZCRB1 antibody can be used for detection of ZCRB1 by Western blot at 1-2 µg/mL.

Comment: Target Species of Antibody: Human

Restrictions: For Research Use only

## Handling

---

Format: Liquid

Concentration: Lot specific

Buffer: PBS, 0.02 % sodium azide

Preservative: Sodium azide

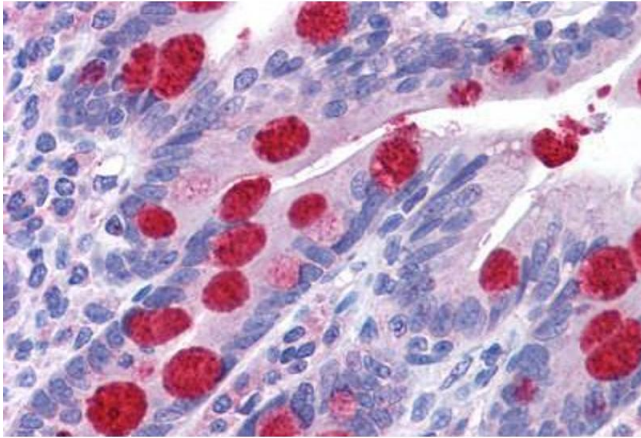
Precaution of Use: This product contains Sodium azide: a POISONOUS AND HAZARDOUS SUBSTANCE which should be handled by trained staff only.

Handling Advice: avoid freeze thaw cycles. Store undiluted.

Storage: 4 °C, -20 °C

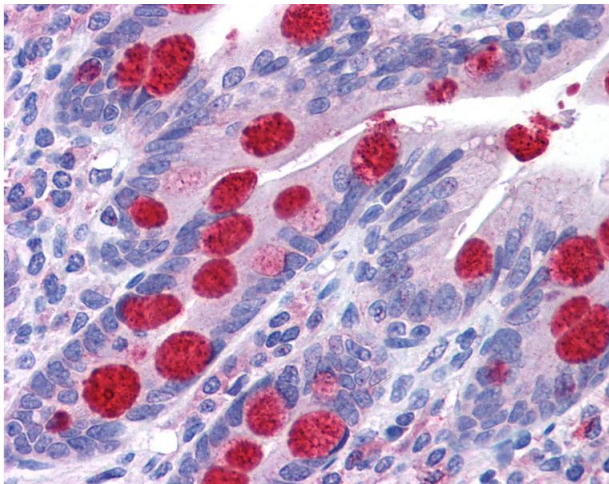
Storage Comment: Store at 4°C for 3 months and -20°C, stable for up to 1 year. Avoid repeated freeze-thaw cycles.

Expiry Date: 12 months



### Immunohistochemistry (Formalin-fixed Paraffin-embedded Sections)

**Image 1.** Human Small Intestine: Formalin-Fixed, Paraffin-Embedded (FFPE)



### Immunohistochemistry

**Image 2.** Anti-ZCRB1 antibody IHC of human small intestine. Immunohistochemistry of formalin-fixed, paraffin-embedded tissue after heat-induced antigen retrieval. Antibody concentration 10 ug/ml.