



[Go to Product page](#)

Datasheet for ABIN605100
anti-SYPL1 antibody (N-Term)

2 Images

Overview

Quantity:	50 µg
Target:	SYPL1
Binding Specificity:	N-Term
Reactivity:	Human, Mouse, Rat
Host:	Rabbit
Clonality:	Polyclonal
Conjugate:	This SYPL1 antibody is un-conjugated
Application:	Western Blotting (WB), ELISA, Immunohistochemistry (IHC), Immunohistochemistry (Paraffin-embedded Sections) (IHC (p))

Product Details

Brand:	IHC-plus™
Isotype:	IgG
Specificity:	This antibody will not recognize synaptophysin of SYPL2. Two isoforms of SYPL1 are known to exist, this antibody will only recognize the longer isoform.
Purification:	Immunoaffinity purified

Target Details

Target:	SYPL1
Alternative Name:	SYPL1 (SYPL1 Products)

Target Details

Background: Name/Gene ID: SYPL1

Synonyms: SYPL1, H-SP1, Synaptophysin-like 1, SYPL, Synaptophysin-like protein, Synaptophysin-like protein 1, Pantophysin

Gene ID: 6856

UniProt: [Q16563](#)

Application Details

Application Notes: Approved: ELISA, IHC, IHC-P (5 µg/mL), WB (1 - 2 µg/mL)

Usage: SYPL1 antibody can be used for detection of SYPL1 by Western blot at 1-2 µg/mL.

Comment: Target Species of Antibody: Human

Restrictions: For Research Use only

Handling

Format: Liquid

Concentration: Lot specific

Buffer: PBS, 0.02 % sodium azide

Preservative: Sodium azide

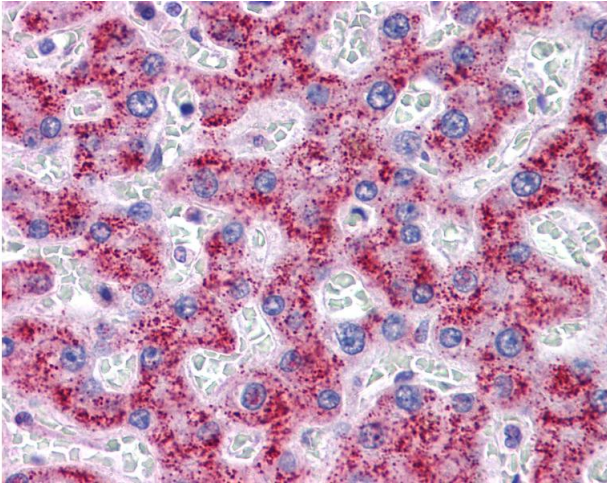
Precaution of Use: This product contains Sodium azide: a POISONOUS AND HAZARDOUS SUBSTANCE which should be handled by trained staff only.

Handling Advice: avoid freeze thaw cycles. Store undiluted.

Storage: 4 °C,-20 °C

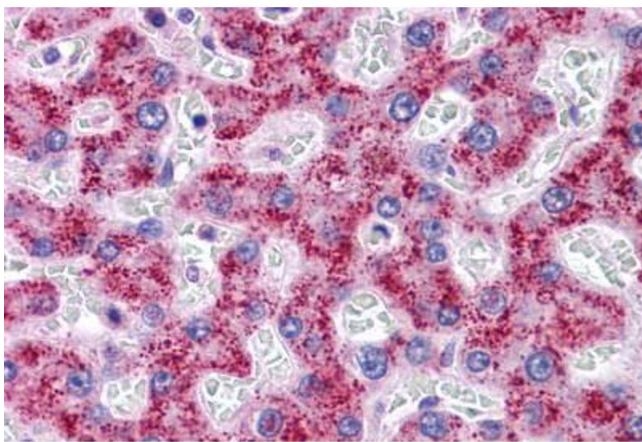
Storage Comment: Store at 4°C for 3 months and -20°C, stable for up to 1 year. Avoid repeated freeze-thaw cycles.

Expiry Date: 12 months



Immunohistochemistry

Image 1. Anti-SYPL1 antibody IHC of human liver. Immunohistochemistry of formalin-fixed, paraffin-embedded tissue after heat-induced antigen retrieval. Antibody concentration 5 ug/ml.



Immunohistochemistry (Formalin-fixed Paraffin-embedded Sections)

Image 2. Human Liver: Formalin-Fixed, Paraffin-Embedded (FFPE)