

Datasheet for ABIN605113
anti-TRPM7 antibody (AA 1817-1863)



[Go to Product page](#)

2 Images

Overview

Quantity:	50 µg
Target:	TRPM7
Binding Specificity:	AA 1817-1863
Reactivity:	Human, Mouse, Rat
Host:	Mouse
Clonality:	Monoclonal
Conjugate:	This TRPM7 antibody is un-conjugated
Application:	Western Blotting (WB), Immunohistochemistry (IHC), Immunocytochemistry (ICC), Immunoprecipitation (IP), Immunohistochemistry (Paraffin-embedded Sections) (IHC (p))

Product Details

Brand:	IHC-plus™
Immunogen:	Fusion protein amino acids 1817-1863 (C- terminus) of mouse TrpM7, accession number Q923J1. Type of Immunogen: Fusion protein
Clone:	S74-25
Isotype:	IgG1
Specificity:	Detects ~220 kD protein. No cross reactivity with TrpM6.
Purification:	Protein G purified from tissue culture supernatant

Target Details

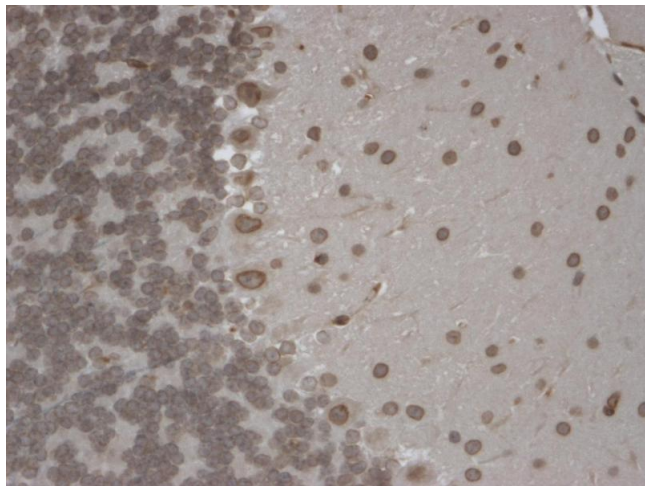
Target:	TRPM7
Alternative Name:	TRPM7 (TRPM7 Products)
Background:	Name/Gene ID: TRPM7 Subfamily: Alpha-kinases Family: Protein Kinase Synonyms: TRPM7, CHAK, LTRPC7, ALSPDC, TRP-PLIK, CHAK1, Channel-kinase 1, LTrpC-7
Gene ID:	54822
UniProt:	Q96QT4

Application Details

Application Notes:	Approved: ICC (0.1 - 1 µg/mL), IHC, IHC-P (5 µg/mL), IP (1 - 10 µg/mL), WB (1 - 10 µg/mL) Usage: Western Blot: Use the lysate in SDS buffer but without boiling, incubating for 20 mins at 37 °C instead.
Comment:	Target Species of Antibody: Mouse
Restrictions:	For Research Use only

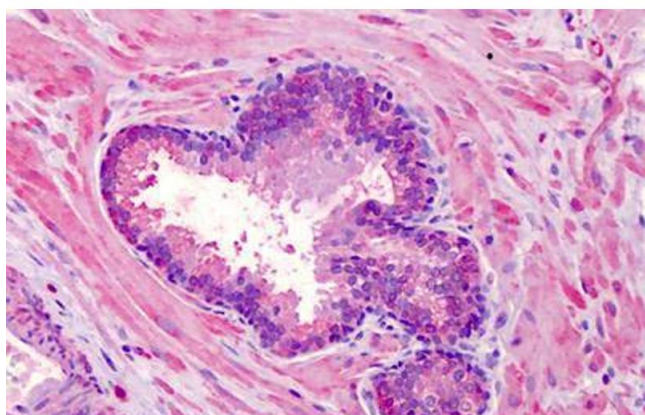
Handling

Format:	Liquid
Concentration:	Lot specific
Buffer:	PBS, pH 7.4, 50 % glycerol, 0.09 % sodium azide
Preservative:	Sodium azide
Precaution of Use:	This product contains Sodium azide: a POISONOUS AND HAZARDOUS SUBSTANCE which should be handled by trained staff only.
Storage:	4 °C,-20 °C
Storage Comment:	Short term: 4°C. Long term: Store at -20°C. Avoid freeze-thaw cycles.



Immunohistochemistry

Image 1. IHC analysis of TrpM7 tested on mouse brain using a dilution of TRPM7 antibody. Strong positivity of the nuclear membrane of every cell. This image was taken for the unconjugated form of this product. Other forms have not been tested.



Immunohistochemistry (Formalin-fixed Paraffin-embedded Sections)

Image 2. Human Prostate: Formalin-Fixed, Paraffin-Embedded (FFPE)