

Datasheet for ABIN605114

anti-Calmodulin 1 antibody (C-Term)**2** Images[Go to Product page](#)

Overview

Quantity:	50 µg
Target:	Calmodulin 1 (Calm1)
Binding Specificity:	C-Term
Reactivity:	Human, Rat, Mouse, Cow, Pig, Wheat
Host:	Mouse
Clonality:	Monoclonal
Conjugate:	This Calmodulin 1 antibody is un-conjugated
Application:	Western Blotting (WB), Immunohistochemistry (IHC), Immunoprecipitation (IP), Immunohistochemistry (Paraffin-embedded Sections) (IHC (p)), Radioimmunoassay (RIA)

Product Details

Brand:	IHC-plus™
Immunogen:	Synthetic peptide corresponding to the 21 carboxy-terminal amino acids of bovine calmodulin, conjugated with thyroglobulin. Type of Immunogen: Synthetic peptide
Isotype:	IgG1
Specificity:	Recognizes both Ca ²⁺ -bound and Ca ²⁺ -free calmodulin. Does not recognize bovine S100-alpha, S100-beta, troponin C or parvalbumin. Species cross-reactivity: rat, mouse, human, porcine and wheat germ. Wide cross-reactivity expected.
Purification:	Protein G purified

Target Details

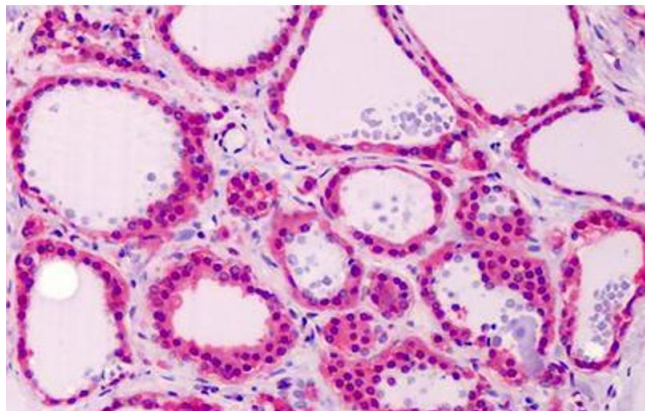
Target:	Calmodulin 1 (Calm1)
Alternative Name:	Calmodulin (Calm1 Products)
Pathways:	cAMP Metabolic Process , Myometrial Relaxation and Contraction , G-protein mediated Events , Interaction of EGFR with phospholipase C-gamma , Phototransduction , BCR Signaling

Application Details

Application Notes:	Approved: IHC, IHC-P (5 µg/mL), IP, RIA, WB Usage: Suitable for use in Western Blot, Immunoprecipitation and RIA. Proteins were visualized using a goat anti-mouse secondary antibody conjugated to HRP and a chemiluminescence detection system. Immunoprecipitation: 4 µg immunoprecipitates calmodulin from A431 RIPA cell lysate.
Comment:	Target Species of Antibody: Bovine
Restrictions:	For Research Use only

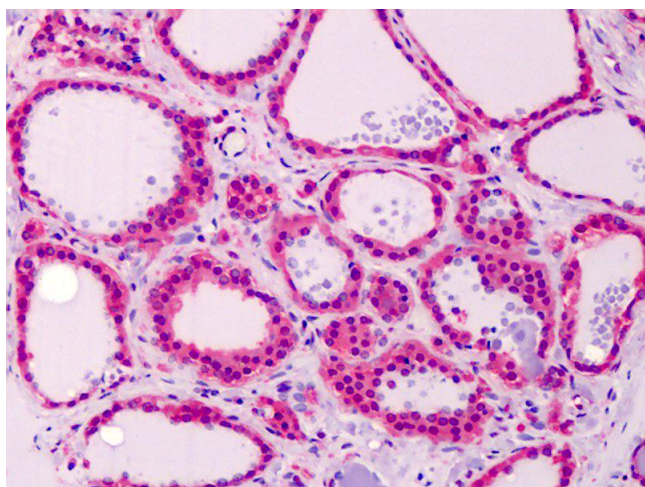
Handling

Format:	Liquid
Concentration:	Lot specific
Buffer:	0.1 M Tris-glycine, pH 7.4, 0.15 M sodium chloride, 0.05 % sodium azide.
Preservative:	Sodium azide
Precaution of Use:	This product contains Sodium azide: a POISONOUS AND HAZARDOUS SUBSTANCE which should be handled by trained staff only.
Handling Advice:	Aliquot to Avoid repeated freezing and thawing.
Storage:	4 °C,-20 °C
Storage Comment:	May be stored at 4°C for short-term only. Aliquot to avoid freeze-thaw cycles. Store at -20°C. Aliquots are stable for at least 1 year.



Immunohistochemistry (Formalin-fixed Paraffin-embedded Sections)

Image 1. Human Thyroid: Formalin-Fixed, Paraffin-Embedded (FFPE)



Immunohistochemistry

Image 2. Anti-Calmodulin antibody IHC of human thyroid. Immunohistochemistry of formalin-fixed, paraffin-embedded tissue after heat-induced antigen retrieval. Antibody concentration 5 ug/ml.