

Datasheet for ABIN605123
anti-RWDD3 antibody (C-Term)



[Go to Product page](#)

3 Images

Overview

Quantity:	0.05 mg
Target:	RWDD3
Binding Specificity:	C-Term
Reactivity:	Human, Mouse, Rat
Host:	Rabbit
Clonality:	Polyclonal
Conjugate:	This RWDD3 antibody is un-conjugated
Application:	Western Blotting (WB), ELISA, Immunohistochemistry (IHC), Immunohistochemistry (Paraffin-embedded Sections) (IHC (p))

Product Details

Brand:	IHC-plus™
Isotype:	IgG
Purification:	Immunoaffinity purified

Target Details

Target:	RWDD3
Alternative Name:	RWDD3 (RWDD3 Products)
Background:	Name/Gene ID: RWDD3

Synonyms: RWDD3, DKFZP566K023, RSUME, RWD domain containing 3

Target Details

Gene ID: 25950

UniProt: [Q9Y3V2](#)

Application Details

Application Notes: Approved: ELISA, IHC, IHC-P (5 µg/mL), WB (1 - 2 µg/mL)

Usage: RWDD3 antibody can be used for detection of RWDD3 by Western blot at 1-2 µg/mL.

Comment: Target Species of Antibody: Human

Restrictions: For Research Use only

Handling

Format: Liquid

Concentration: Lot specific

Buffer: PBS, 0.02 % sodium azide

Preservative: Sodium azide

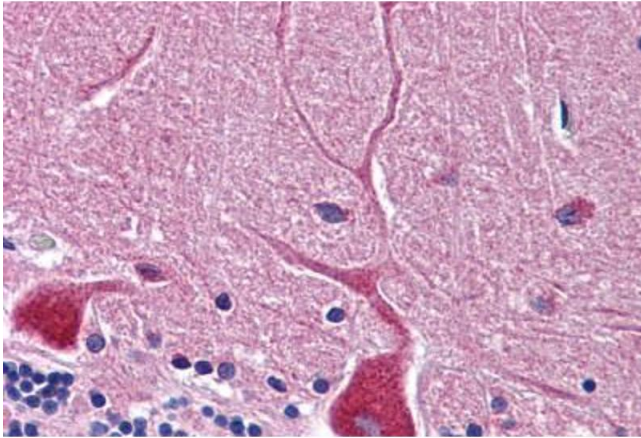
Precaution of Use: This product contains Sodium azide: a POISONOUS AND HAZARDOUS SUBSTANCE which should be handled by trained staff only.

Handling Advice: avoid freeze thaw cycles. Store undiluted.

Storage: 4 °C, -20 °C

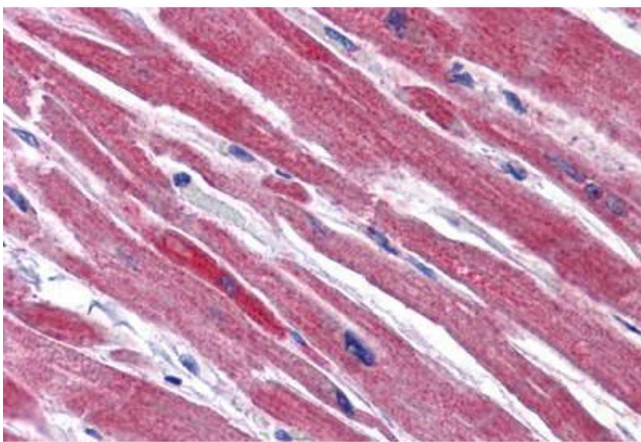
Storage Comment: Store at 4°C for 3 months and -20°C, stable for up to 1 year. Avoid repeated freeze-thaw cycles.

Expiry Date: 12 months



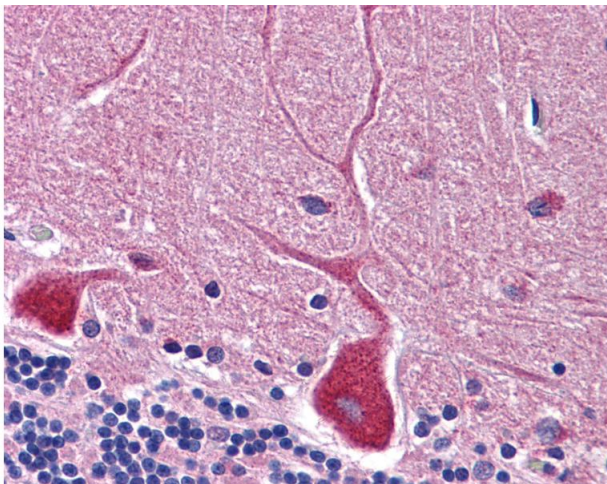
Immunohistochemistry (Formalin-fixed Paraffin-embedded Sections)

Image 1. Human Brain, Cerebellum: Formalin-Fixed, Paraffin-Embedded (FFPE)



Immunohistochemistry (Formalin-fixed Paraffin-embedded Sections)

Image 2. Human Heart: Formalin-Fixed, Paraffin-Embedded (FFPE)



Immunohistochemistry

Image 3. Anti-RWDD3 antibody IHC of human brain, cerebellum. Immunohistochemistry of formalin-fixed, paraffin-embedded tissue after heat-induced antigen retrieval. Antibody concentration 5 ug/ml.