



Datasheet for ABIN605126  
**anti-PAGR1 antibody (C-Term)**



[Go to Product page](#)

2 Images

Overview

Quantity:	0.05 mg
Target:	PAGR1
Binding Specificity:	C-Term
Reactivity:	Human, Mouse
Host:	Rabbit
Clonality:	Polyclonal
Conjugate:	This PAGR1 antibody is un-conjugated
Application:	Western Blotting (WB), Immunohistochemistry (Paraffin-embedded Sections) (IHC (p)), Immunohistochemistry (IHC), ELISA

Product Details

Brand:	IHC-plus™
Isotype:	IgG
Purification:	Immunoaffinity purified

Target Details

Target:	PAGR1
Alternative Name:	PAGR1 / C16orf53 ( <a href="#">PAGR1 Products</a> )
Background:	Name/Gene ID: PAGR1
	Synonyms: PAGR1, C16orf53, GAS, PA1

## Target Details

---

Gene ID: 79447

UniProt: [Q9BTK6](#)

## Application Details

---

Application Notes: Approved: ELISA, IHC, IHC-P (5 µg/mL), WB (1 - 2 µg/mL)

Usage: Antibody does not work for IHC with mouse samples. GAS antibody can be used for detection of GAS by Western blot at 1-2 µg/mL.

Comment: Target Species of Antibody: Human

Restrictions: For Research Use only

## Handling

---

Format: Liquid

Concentration: Lot specific

Buffer: PBS, 0.02 % sodium azide

Preservative: Sodium azide

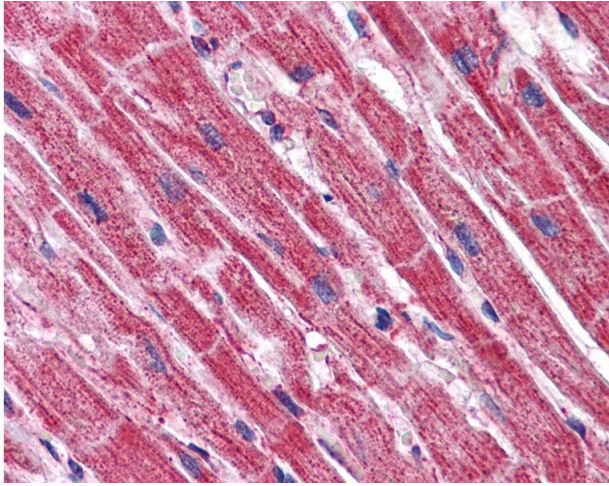
Precaution of Use: This product contains Sodium azide: a POISONOUS AND HAZARDOUS SUBSTANCE which should be handled by trained staff only.

Handling Advice: avoid freeze thaw cycles. Store undiluted.

Storage: 4 °C, -20 °C

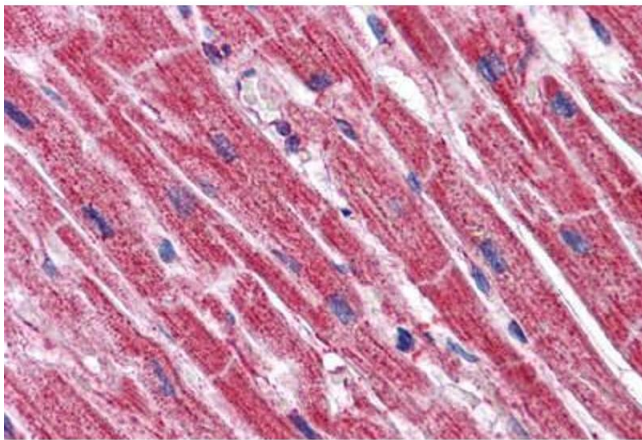
Storage Comment: Store at 4°C for 3 months and -20°C, stable for up to 1 year. Avoid repeated freeze-thaw cycles.

Expiry Date: 12 months



#### Immunohistochemistry

**Image 1.** Anti-C16orf53 antibody IHC of human heart. Immunohistochemistry of formalin-fixed, paraffin-embedded tissue after heat-induced antigen retrieval. Antibody concentration 5 ug/ml.



#### Immunohistochemistry (Formalin-fixed Paraffin-embedded Sections)

**Image 2.** Human Heart: Formalin-Fixed, Paraffin-Embedded (FFPE)