



[Go to Product page](#)

Datasheet for ABIN605128  
**anti-NDUFAF2 antibody (C-Term)**

3 Images

Overview

Quantity:	0.05 mg
Target:	NDUFAF2
Binding Specificity:	C-Term
Reactivity:	Human
Host:	Rabbit
Clonality:	Polyclonal
Conjugate:	This NDUFAF2 antibody is un-conjugated
Application:	Western Blotting (WB), ELISA, Immunohistochemistry (IHC), Immunofluorescence (IF), Immunohistochemistry (Paraffin-embedded Sections) (IHC (p))

Product Details

Brand:	IHC-plus™
Isotype:	IgG
Purification:	Immunoaffinity purified

Target Details

Target:	NDUFAF2
Alternative Name:	NDUFAF2 / NDUFA12L ( <a href="#">NDUFAF2 Products</a> )
Background:	Name/Gene ID: NDUFAF2

Synonyms: NDUFAF2, B17.2-like, B17.2L, Mimitin, mitochondrial, MMTN, NDUFA12-like protein,

## Target Details

---

NDUFA12L, NDUFAF2 , Mimitin, NDUFA12-like

Gene ID: 91942

UniProt: [Q8N183](#)

Pathways: [SARS-CoV-2 Protein Interactome](#)

## Application Details

---

Application Notes: Approved: ELISA, IF, IHC, IHC-P (5 µg/mL), WB (1 - 2 µg/mL)

Usage: Mimitin antibody can be used for detection of Mimitin by Western blot at 1-2 µg/mL.

Comment: Target Species of Antibody: Human

Restrictions: For Research Use only

## Handling

---

Format: Liquid

Concentration: Lot specific

Buffer: PBS, 0.02 % sodium azide

Preservative: Sodium azide

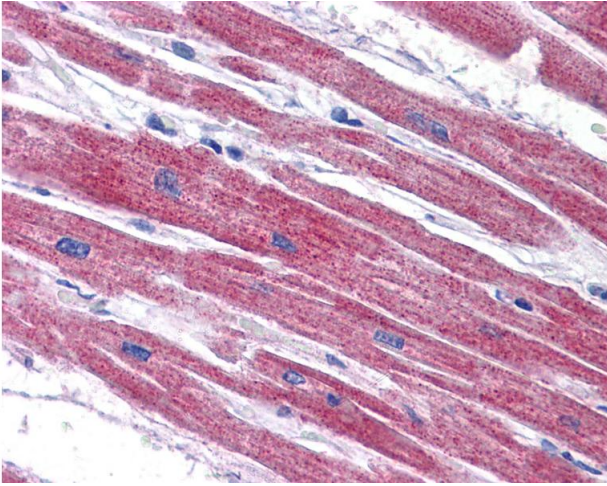
Precaution of Use: This product contains Sodium azide: a POISONOUS AND HAZARDOUS SUBSTANCE which should be handled by trained staff only.

Handling Advice: avoid freeze thaw cycles. Store undiluted.

Storage: 4 °C, -20 °C

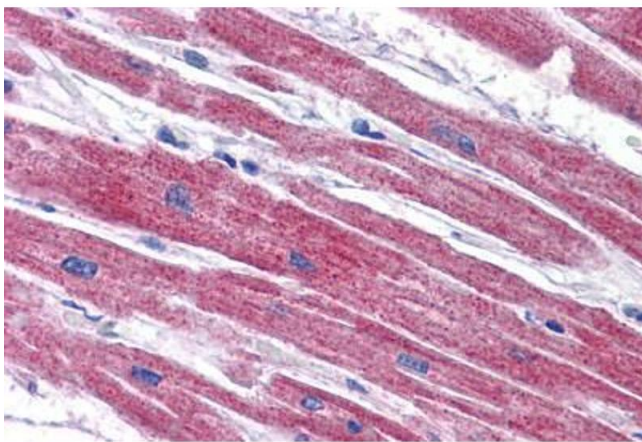
Storage Comment: Store at 4°C for 3 months and -20°C, stable for up to 1 year. Avoid repeated freeze-thaw cycles.

Expiry Date: 12 months



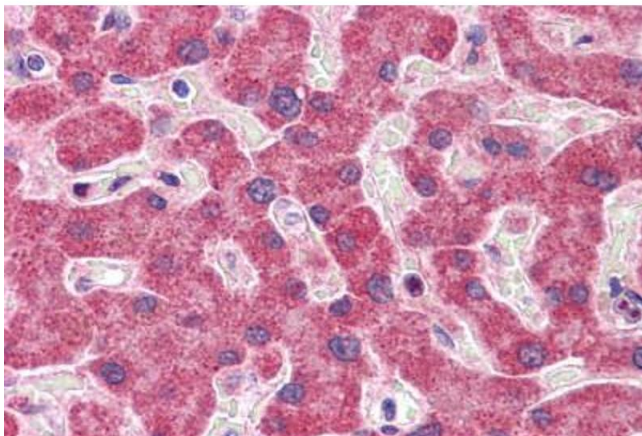
#### Immunohistochemistry

**Image 1.** Anti-NDUFAF2 antibody IHC of human heart. Immunohistochemistry of formalin-fixed, paraffin-embedded tissue after heat-induced antigen retrieval. Antibody concentration 5 ug/ml.



#### Immunohistochemistry (Formalin-fixed Paraffin-embedded Sections)

**Image 2.** Human Heart: Formalin-Fixed, Paraffin-Embedded (FFPE)



#### Immunohistochemistry (Formalin-fixed Paraffin-embedded Sections)

**Image 3.** Human Liver: Formalin-Fixed, Paraffin-Embedded (FFPE)