



[Go to Product page](#)

Datasheet for ABIN605141
anti-PPAPDC3 antibody (N-Term)

3 Images

Overview

Quantity:	0.05 mg
Target:	PPAPDC3
Binding Specificity:	N-Term
Reactivity:	Human, Mouse, Rat
Host:	Rabbit
Clonality:	Polyclonal
Conjugate:	This PPAPDC3 antibody is un-conjugated
Application:	Western Blotting (WB), ELISA, Immunohistochemistry (Paraffin-embedded Sections) (IHC (p)), Immunohistochemistry (IHC)

Product Details

Brand:	IHC-plus™
Isotype:	IgG
Purification:	Immunoaffinity purified

Target Details

Target:	PPAPDC3
Alternative Name:	PPAPDC3 (PPAPDC3 Products)
Background:	Name/Gene ID: PPAPDC3
	Synonyms: PPAPDC3, NET39, C9orf67

Target Details

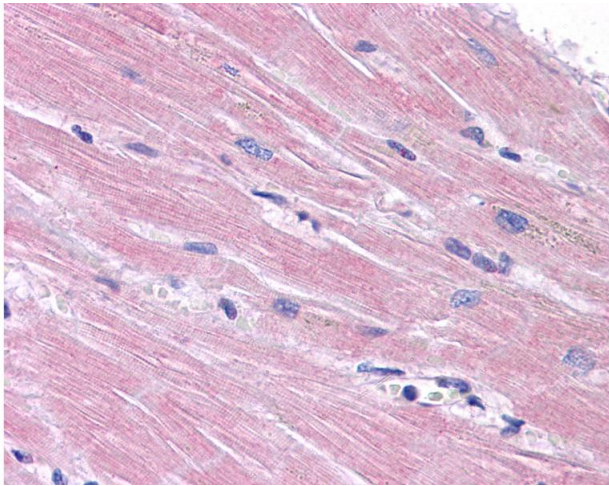
Gene ID:	84814
UniProt:	Q8NBV4
Pathways:	Regulation of Muscle Cell Differentiation, Skeletal Muscle Fiber Development

Application Details

Application Notes:	Approved: ELISA, IHC, IHC-P (5 µg/mL), WB (1 - 2 µg/mL) Usage: PPAPDC3 antibody can be used for detection of PPAPDC3 by Western blot at 1-2 µg/mL.
Comment:	Target Species of Antibody: Human
Restrictions:	For Research Use only

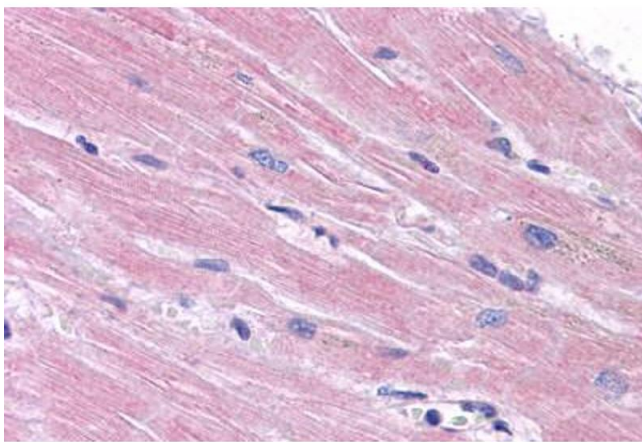
Handling

Format:	Liquid
Concentration:	Lot specific
Buffer:	PBS, 0.02 % sodium azide
Preservative:	Sodium azide
Precaution of Use:	This product contains Sodium azide: a POISONOUS AND HAZARDOUS SUBSTANCE which should be handled by trained staff only.
Handling Advice:	avoid freeze thaw cycles. Store undiluted.
Storage:	4 °C,-20 °C
Storage Comment:	Store at 4°C for 3 months and -20°C, stable for up to 1 year. Avoid repeated freeze-thaw cycles.
Expiry Date:	12 months



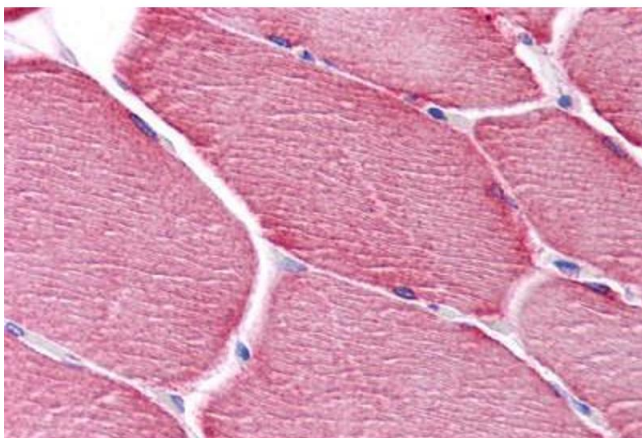
Immunohistochemistry

Image 1. Anti-PPAPDC3 antibody IHC of human heart. Immunohistochemistry of formalin-fixed, paraffin-embedded tissue after heat-induced antigen retrieval. Antibody concentration 5 ug/ml.



Immunohistochemistry (Formalin-fixed Paraffin-embedded Sections)

Image 2. Human Heart: Formalin-Fixed, Paraffin-Embedded (FFPE)



Immunohistochemistry (Formalin-fixed Paraffin-embedded Sections)

Image 3. Human Skeletal Muscle: Formalin-Fixed, Paraffin-Embedded (FFPE)