



[Go to Product page](#)

Datasheet for ABIN605173

anti-KLHL25 antibody (Internal Region)

4 Images

Overview

Quantity:	0.05 mg
Target:	KLHL25
Binding Specificity:	Internal Region
Reactivity:	Human
Host:	Chicken
Clonality:	Polyclonal
Conjugate:	This KLHL25 antibody is un-conjugated
Application:	Western Blotting (WB), ELISA, Immunohistochemistry (IHC), Immunohistochemistry (Paraffin-embedded Sections) (IHC (p))

Product Details

Brand:	IHC-plus™
Isotype:	IgY
Purification:	Immunoaffinity purified

Target Details

Target:	KLHL25
Alternative Name:	KLHL25 (KLHL25 Products)
Background:	Name/Gene ID: KLHL25

Synonyms: KLHL25, BTB/POZ KELCH domain protein, ENC-2, Ectodermal-neural cortex 2,

Target Details

ENC2, Kelch-like protein 25, Kelch-like 25 (Drosophila)

Gene ID: 64410

UniProt: [Q9H0H3](#)

Application Details

Application Notes: Approved: ELISA, IHC, IHC-P (5 µg/mL), WB (1 - 2 µg/mL)

Usage: ENC-2 antibody can be used for detection of ENC-2 by Western blot at 1-2 µg/mL.

Comment: Target Species of Antibody: Human

Restrictions: For Research Use only

Handling

Format: Liquid

Concentration: Lot specific

Buffer: PBS, 0.02 % sodium azide

Preservative: Sodium azide

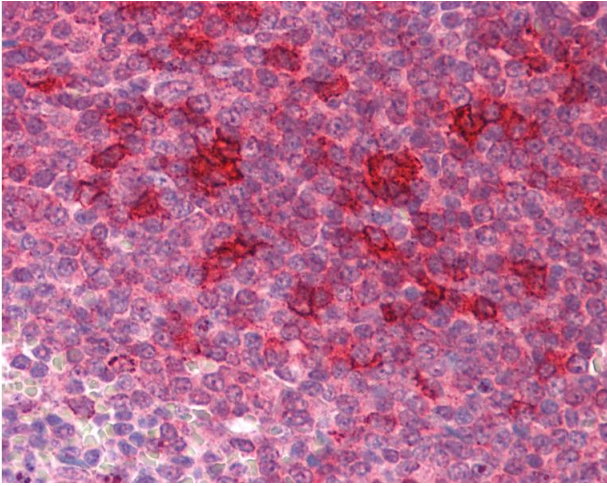
Precaution of Use: This product contains Sodium azide: a POISONOUS AND HAZARDOUS SUBSTANCE which should be handled by trained staff only.

Handling Advice: avoid freeze thaw cycles. Store undiluted.

Storage: 4 °C, -20 °C

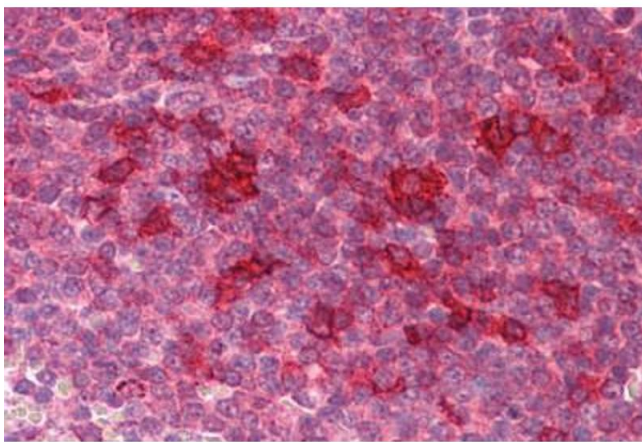
Storage Comment: Store at 4°C for 3 months and -20°C, stable for up to 1 year. Avoid repeated freeze-thaw cycles.

Expiry Date: 12 months



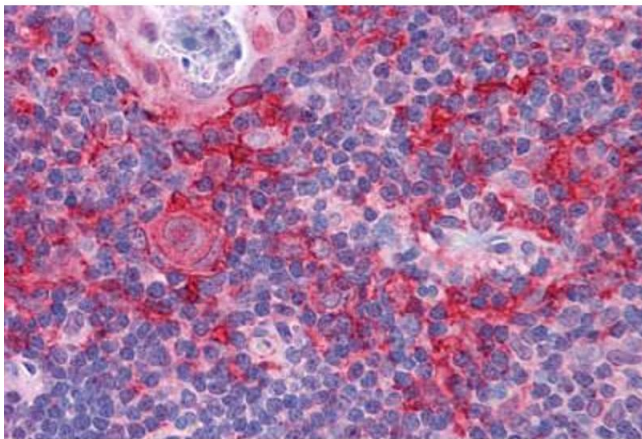
Immunohistochemistry

Image 1. Anti-KLHL25 antibody IHC of human spleen. Immunohistochemistry of formalin-fixed, paraffin-embedded tissue after heat-induced antigen retrieval. Antibody concentration 5 ug/ml.



Immunohistochemistry (Formalin-fixed Paraffin-embedded Sections)

Image 2. Human Spleen: Formalin-Fixed, Paraffin-Embedded (FFPE)



Immunohistochemistry (Formalin-fixed Paraffin-embedded Sections)

Image 3. Human Thymus: Formalin-Fixed, Paraffin-Embedded (FFPE)

Please check the [product details page](#) for more images. Overall 4 images are available for ABIN605173.