



[Go to Product page](#)

Datasheet for ABIN605176

anti-SUMO2 antibody (C-Term)

2 Images

Overview

| | |
|----------------------|---|
| Quantity: | 0.05 mg |
| Target: | SUMO2 |
| Binding Specificity: | C-Term |
| Reactivity: | Human, Rat, Mouse |
| Host: | Rabbit |
| Clonality: | Polyclonal |
| Conjugate: | This SUMO2 antibody is un-conjugated |
| Application: | Western Blotting (WB), ELISA, Immunohistochemistry (IHC), Immunohistochemistry (Paraffin-embedded Sections) (IHC (p)) |

Product Details

| | |
|---------------|-------------------------|
| Brand: | IHC-plus™ |
| Isotype: | IgG |
| Purification: | Immunoaffinity purified |

Target Details

| | |
|-------------------|--|
| Target: | SUMO2 |
| Alternative Name: | SUMO2 + SUMO3 (SUMO2 Products) |
| Background: | This antibody detects: SUMO2 + SUMO3 |
| Pathways: | Methionine Biosynthetic Process |

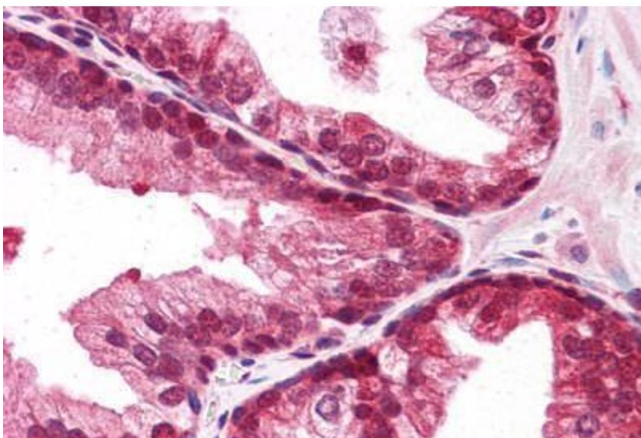
Application Details

| | |
|--------------------|--|
| Application Notes: | Approved: ELISA, IHC, IHC-P (5 µg/mL), WB (1 - 2 µg/mL) |
| | Usage: SUMO2/3 antibody can be used for detection of SUMO2 and SUMO3 by Western blot at 1-2 µg/mL. |
| Comment: | Target Species of Antibody: Human |
| Restrictions: | For Research Use only |

Handling

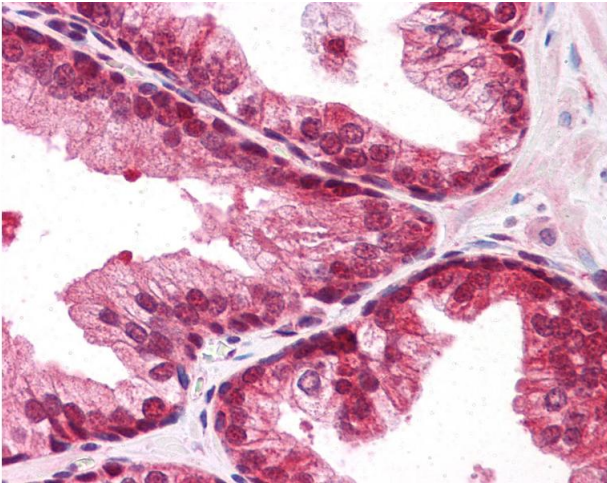
| | |
|--------------------|--|
| Format: | Liquid |
| Concentration: | Lot specific |
| Buffer: | PBS, 0.02 % sodium azide |
| Preservative: | Sodium azide |
| Precaution of Use: | This product contains Sodium azide: a POISONOUS AND HAZARDOUS SUBSTANCE which should be handled by trained staff only. |
| Handling Advice: | avoid freeze thaw cycles. Store undiluted. |
| Storage: | 4 °C,-20 °C |
| Storage Comment: | Store at 4°C for 3 months and -20°C, stable for up to 1 year. Avoid repeated freeze-thaw cycles. |
| Expiry Date: | 12 months |

Images



Immunohistochemistry (Formalin-fixed Paraffin-embedded Sections)

Image 1. Human Prostate: Formalin-Fixed, Paraffin-Embedded (FFPE)



Immunohistochemistry

Image 2. Anti-SUMO2/SUMO3 antibody IHC of human prostate. Immunohistochemistry of formalin-fixed, paraffin-embedded tissue after heat-induced antigen retrieval. Antibody concentration 5 ug/ml.