

Datasheet for ABIN6098837  
**anti-CHRFAM7A antibody (AA 1-150)**



[Go to Product page](#)

3 Images

### Overview

Quantity:	100 µL
Target:	CHRFAM7A
Binding Specificity:	AA 1-150
Reactivity:	Human, Rat
Host:	Rabbit
Clonality:	Polyclonal
Conjugate:	This CHRFAM7A antibody is un-conjugated
Application:	Western Blotting (WB), ELISA, Immunohistochemistry (IHC)

### Product Details

Immunogen:	Recombinant human CHRNA7-FAM7A fusion protein (1-150AA).
Isotype:	IgG
Purification:	Antigen Affinity Chromatography

### Target Details

Target:	CHRFAM7A
Alternative Name:	CHRFAM7A ( <a href="#">CHRFAM7A Products</a> )
Molecular Weight:	46 kDa
Gene ID:	89832
UniProt:	<a href="#">Q494W8</a>

## Application Details

Application Notes: Optimal working dilution should be determined by the investigator.

Restrictions: For Research Use only

## Handling

Format: Liquid

Buffer: PBS, pH 7.3, containing 0.02 % sodium azide and 50 % Glycerol.

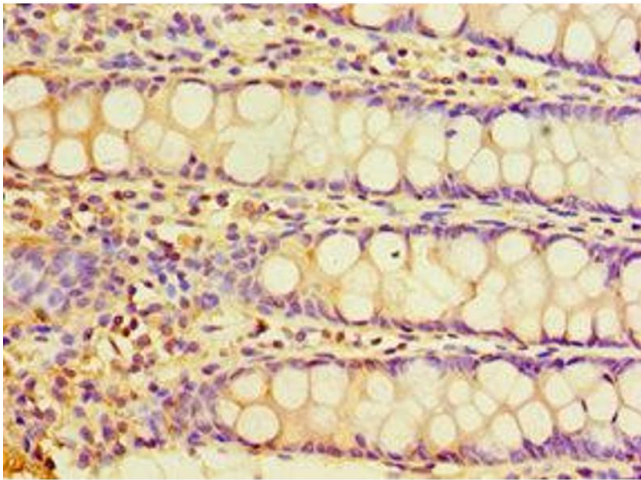
Preservative: Sodium azide

Precaution of Use: This product contains Sodium azide: a POISONOUS AND HAZARDOUS SUBSTANCE which should be handled by trained staff only.

Storage: -20 °C,-80 °C

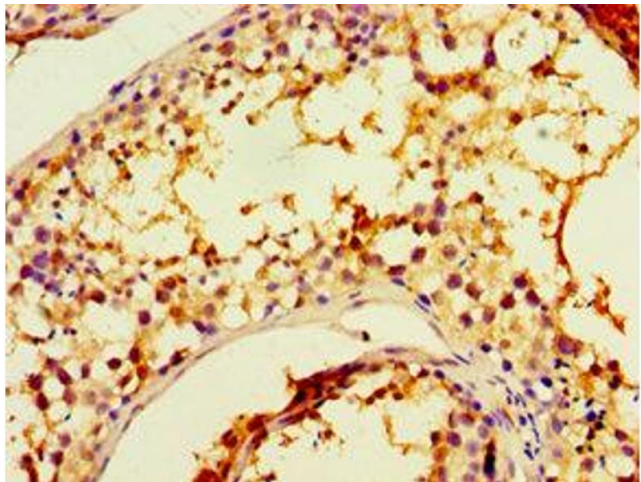
Storage Comment: Aliquot and store at -20 °C or -80 °C. Avoid repeated freeze/thaw cycles.

## Images



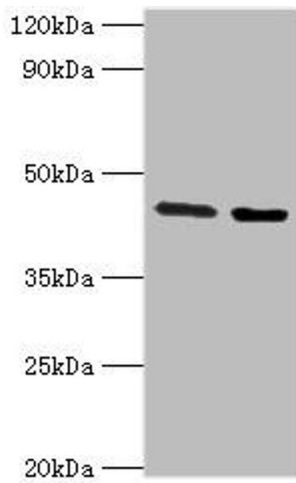
### Immunohistochemistry (Paraffin-embedded Sections)

**Image 1.** Immunohistochemistry of paraffin-embedded human rectum tissue using CHRFA7A Antibody at a dilution of 1:100.



### Immunohistochemistry (Paraffin-embedded Sections)

**Image 2.** Immunohistochemistry of paraffin-embedded human testis tissue using CHRFA7A Antibody at a dilution of 1:100.



### Western Blotting

**Image 3.** Western blot analysis of Jurkat whole cell lysate (Lane 1) and Rat liver tissue (Lane 2) with CHR FAM7A Antibody (3 ug/ml) and Goat Anti-Rabbit polyclonal antibody (1/10000 dilution). The band sized observed was 46 kDa (predicted band size: 46 kDa).