



[Go to Product page](#)

Datasheet for ABIN6119411

## ECT2 Protein

### 1 Image

#### Overview

Quantity:	100 µg
Target:	ECT2
Origin:	Mouse
Source:	Escherichia coli (E. coli)
Protein Type:	Recombinant
Application:	Western Blotting (WB), SDS-PAGE (SDS), ELISA, Immunoprecipitation (IP)

#### Product Details

Characteristics: Mouse ECT2 Protein

#### Target Details

Target:	ECT2
Alternative Name:	ECT2 ( <a href="#">ECT2 Products</a> )
Molecular Weight:	56.2 kDa
UniProt:	<a href="#">Q07139</a>
Pathways:	<a href="#">Neurotrophin Signaling Pathway</a> , <a href="#">Cell-Cell Junction Organization</a>

#### Application Details

Application Notes:	Optimal working dilution should be determined by the investigator.
Comment:	Please note that the majority of this suppliers proteins are partial length rather than full length.

## Application Details

---

We recommend customers to inquire.

Restrictions: For Research Use only

## Handling

---

Format: Liquid

Concentration: 200 µg/mL

Buffer: Prior to lyophilization: PBS, pH 7.4, containing 0.01 % SKL, 1 mM DTT, 5 % Trehalose and Proclin-300.

Preservative: Dithiothreitol (DTT), ProClin

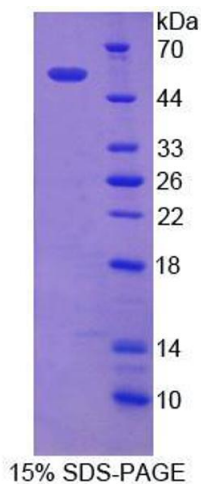
Precaution of Use: This product contains ProClin and Dithiothreitol (DTT): POISONOUS AND HAZARDOUS SUBSTANCES which should be handled by trained staff only.

Storage: 4 °C, -80 °C

Storage Comment: Store at 2-8 °C for up to one month. Store at -80 °C for up to one year. Avoid repeated freeze/thaw cycles.

## Images

---



### SDS-PAGE

**Image 1.** SDS-PAGE analysis of Mouse ECT2 Protein.