

Datasheet for ABIN6119563  
**Exportin 6 Protein (XPO6)**



[Go to Product page](#)

1 Image

## Overview

Quantity:	100 µg
Target:	Exportin 6 (XPO6)
Origin:	Human
Source:	Escherichia coli (E. coli)
Protein Type:	Recombinant
Application:	Western Blotting (WB), SDS-PAGE (SDS), ELISA, Immunoprecipitation (IP)

## Product Details

Characteristics:	Human XPO6 Protein
------------------	--------------------

## Target Details

Target:	Exportin 6 (XPO6)
Alternative Name:	XPO6 ( <a href="#">XPO6 Products</a> )
Molecular Weight:	34.3 kDa
UniProt:	<a href="#">Q96QU8</a>

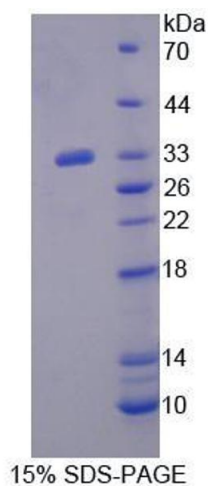
## Application Details

Application Notes:	Optimal working dilution should be determined by the investigator.
Comment:	Please note that the majority of this suppliers proteins are partial length rather than full length. We recommend customers to inquire.
Restrictions:	For Research Use only

## Handling

Format:	Liquid
Concentration:	200 µg/mL
Buffer:	Prior to lyophilization: PBS, pH 7.4, containing 0.01 % SKL, 1 mM DTT, 5 % Trehalose and Proclin-300.
Preservative:	Dithiothreitol (DTT), ProClin
Precaution of Use:	This product contains ProClin and Dithiothreitol (DTT): POISONOUS AND HAZARDOUS SUBSTANCES which should be handled by trained staff only.
Storage:	4 °C, -80 °C
Storage Comment:	Store at 2-8 °C for up to one month. Store at -80 °C for up to one year. Avoid repeated freeze/thaw cycles.

## Images



### SDS-PAGE

**Image 1.** SDS-PAGE analysis of Human XPO6 Protein.