

Datasheet for ABIN6119621

MCEE Protein[Go to Product page](#)**1** Image

Overview

Quantity:	100 µg
Target:	MCEE
Origin:	Mouse
Source:	Escherichia coli (E. coli)
Protein Type:	Recombinant
Application:	SDS-PAGE (SDS), Western Blotting (WB), ELISA, Immunoprecipitation (IP)

Product Details

Characteristics:	Mouse MCEE Protein
------------------	--------------------

Target Details

Target:	MCEE
Alternative Name:	MCEE (MCEE Products)
Molecular Weight:	18.8 kDa
UniProt:	Q9D115
Pathways:	Monocarboxylic Acid Catabolic Process

Application Details

Application Notes:	Optimal working dilution should be determined by the investigator.
Comment:	Please note that the majority of this suppliers proteins are partial length rather than full length.

Application Details

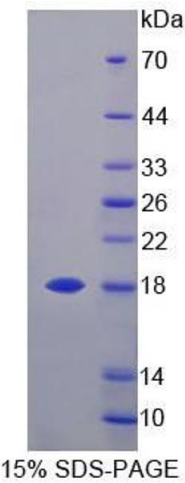
We recommend customers to inquire.

Restrictions: For Research Use only

Handling

Format:	Liquid
Concentration:	200 µg/mL
Buffer:	Prior to lyophilization: PBS, pH 7.4, containing 0.01 % SKL, 1 mM DTT, 5 % Trehalose and Proclin-300.
Preservative:	Dithiothreitol (DTT), ProClin
Precaution of Use:	This product contains ProClin and Dithiothreitol (DTT): POISONOUS AND HAZARDOUS SUBSTANCES which should be handled by trained staff only.
Storage:	4 °C,-80 °C
Storage Comment:	Store at 2-8 °C for up to one month. Store at -80 °C for up to one year. Avoid repeated freeze/thaw cycles.

Images



SDS-PAGE

Image 1. SDS-PAGE analysis of Mouse MCEE Protein.