

Datasheet for ABIN613239

## anti-LMW Kininogen antibody (Biotin)



[Go to Product page](#)

### 1 Image

#### Overview

Quantity:	150 µg
Target:	LMW Kininogen (LMWK)
Reactivity:	Human
Host:	Rabbit
Clonality:	Polyclonal
Conjugate:	This LMW Kininogen antibody is conjugated to Biotin
Application:	Enzyme Immunoassay (EIA), Radioimmunoassay (RIA)

#### Product Details

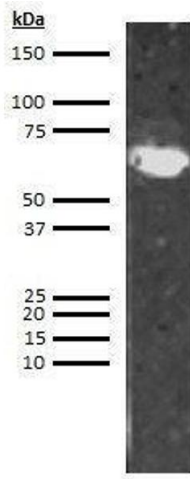
Isotype: IgG

#### Target Details

Target:	LMW Kininogen (LMWK)
Alternative Name:	Kininogen (LMW) ( <a href="#">LMWK Products</a> )

#### Application Details

Restrictions: For Research Use only



### Western Blotting

Image 1.