



Datasheet for ABIN6134166

anti-SRP72 antibody



[Go to Product page](#)

7 Images

Overview

Quantity:	100 µL
Target:	SRP72
Reactivity:	Human
Host:	Rabbit
Clonality:	Polyclonal
Conjugate:	This SRP72 antibody is un-conjugated
Application:	Western Blotting (WB), Immunohistochemistry (IHC)

Product Details

Immunogen:	Recombinant protein of human SRP72.
Isotype:	IgG
Cross-Reactivity:	Human, Rat
Characteristics:	Polyclonal Antibodies

Target Details

Target:	SRP72
Alternative Name:	SRP72 (SRP72 Products)
Background:	This gene encodes the 72 kDa subunit of the signal recognition particle (SRP), a ribonucleoprotein complex that mediates the targeting of secretory proteins to the endoplasmic reticulum (ER). The SRP complex consists of a 7S RNA and 6 protein subunits: SRP9, SRP14, SRP19, SRP54, SRP68, and SRP72, that are bound to the 7S RNA as monomers or

Target Details

heterodimers. SRP has at least 3 distinct functions that can be associated with the protein subunits: signal recognition, translational arrest, and ER membrane targeting by interaction with the docking protein. Mutations in this gene are associated with familial bone marrow failure. Alternatively spliced transcript variants encoding different isoforms have been found for this gene.,SRP72,BMFF,BMFS1,HEL103,Epigenetics & Nuclear Signaling,Signal Transduction,SRP72

Molecular Weight: 67 kDa/74 kDa

Gene ID: 6731

UniProt: [O76094](#)

Pathways: [SARS-CoV-2 Protein Interactome](#)

Application Details

Application Notes: WB,1:500 - 1:2000,IHC,1:50 - 1:200

Comment: HIGH QUALITY

Restrictions: For Research Use only

Handling

Format: Liquid

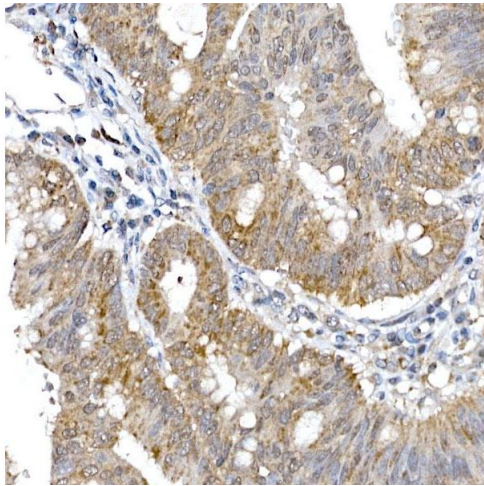
Buffer: PBS with 0.02 % sodium azide,50 % glycerol, pH 7.3.

Preservative: Sodium azide

Precaution of Use: This product contains Sodium azide: a POISONOUS AND HAZARDOUS SUBSTANCE which should be handled by trained staff only.

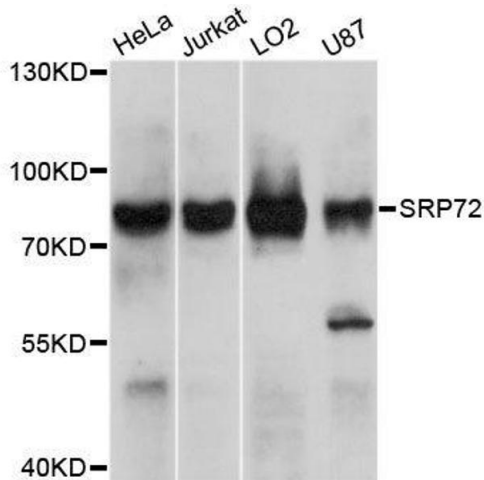
Storage: -20 °C

Storage Comment: Store at -20°C. Avoid freeze / thaw cycles.



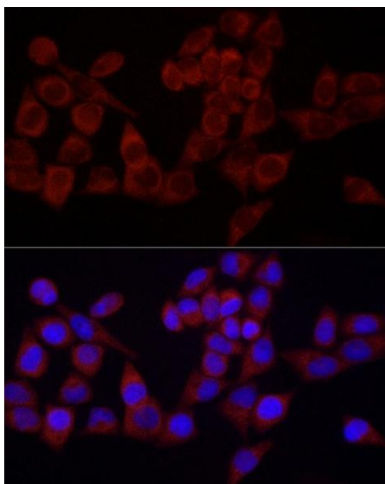
Immunohistochemistry

Image 1. Immunohistochemistry of paraffin-embedded human colon carcinoma using SRP72 Rabbit pAb (ABIN6134166, ABIN6148452, ABIN7101299 and ABIN7101300) at dilution of 1:100 (40x lens). Perform high pressure antigen retrieval with 10 mM citrate buffer pH 6.0 before commencing with IHC staining protocol.



Western Blotting

Image 2. Western blot analysis of extracts of various cell lines, using SRP72 antibody.



Immunofluorescence

Image 3. Immunofluorescence analysis of HeLa cells using SRP72 Rabbit pAb (ABIN6134166, ABIN6148452, ABIN7101299 and ABIN7101300) at dilution of 1:100 (40x lens). Blue: DAPI for nuclear staining.

Please check the [product details page](#) for more images. Overall 7 images are available for ABIN6134166.