



Datasheet for ABIN6134200  
**anti-HTR2C antibody**



[Go to Product page](#)

1 Image

### Overview

Quantity:	100 µL
Target:	HTR2C
Reactivity:	Human
Host:	Rabbit
Clonality:	Polyclonal
Conjugate:	This HTR2C antibody is un-conjugated
Application:	Western Blotting (WB)

### Product Details

Immunogen:	Synthetic Peptide
Cross-Reactivity:	Human

### Target Details

Target:	HTR2C
Alternative Name:	HTR2C ( <a href="#">HTR2C Products</a> )
Molecular Weight:	52 kDa
Gene ID:	3358
UniProt:	<a href="#">P28335</a>
Pathways:	<a href="#">Inositol Metabolic Process</a> , <a href="#">Regulation of Carbohydrate Metabolic Process</a> , <a href="#">Feeding Behaviour</a>

## Application Details

Application Notes: Optimal working dilution should be determined by the investigator.

Comment: HIGH QUALITY

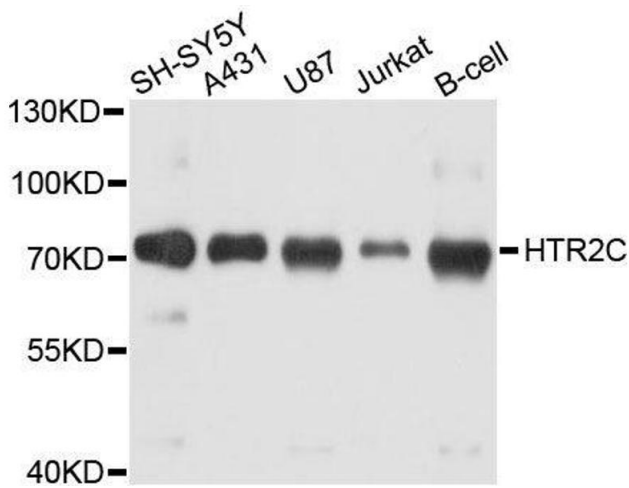
Restrictions: For Research Use only

## Handling

Format: Liquid

Storage: -20 °C

## Images



### Western Blotting

**Image 1.** Western blot analysis of extracts of various cell lines, using HTR2C antibody.