



[Go to Product page](#)

Datasheet for ABIN6134831

## anti-Raly antibody (AA 96-306)

### 2 Images

#### Overview

Quantity:	100 µL
Target:	Raly (RALY)
Binding Specificity:	AA 96-306
Reactivity:	Human
Host:	Rabbit
Clonality:	Polyclonal
Conjugate:	This Raly antibody is un-conjugated
Application:	Western Blotting (WB)

#### Product Details

Immunogen:	Recombinant fusion protein containing a sequence corresponding to amino acids 96-306 of human RALY (NP_057951.1).
Isotype:	IgG
Cross-Reactivity:	Human, Mouse, Rat
Characteristics:	Polyclonal Antibodies

#### Target Details

Target:	Raly (RALY)
Alternative Name:	RALY ( <a href="#">RALY Products</a> )
Background:	This gene encodes a member of the heterogeneous nuclear ribonucleoprotein (hnRNP) gene

## Target Details

---

family. This protein may play a role in pre-mRNA splicing and in embryonic development. Alternate splicing results in multiple transcript variants.,RALY,HNRPCL2,P542,Epigenetics & Nuclear Signaling,RNA Binding,RALY

Molecular Weight: 30 kDa/32 kDa

Gene ID: 22913

UniProt: [Q9UKM9](#)

## Application Details

---

Application Notes: WB,1:500 - 1:2000

Comment: HIGH QUALITY

Restrictions: For Research Use only

## Handling

---

Format: Liquid

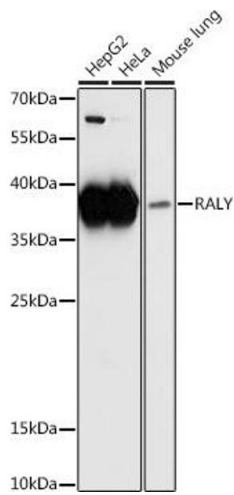
Buffer: PBS with 0.02 % sodium azide,50 % glycerol, pH 7.3.

Preservative: Sodium azide

Precaution of Use: This product contains Sodium azide: a POISONOUS AND HAZARDOUS SUBSTANCE which should be handled by trained staff only.

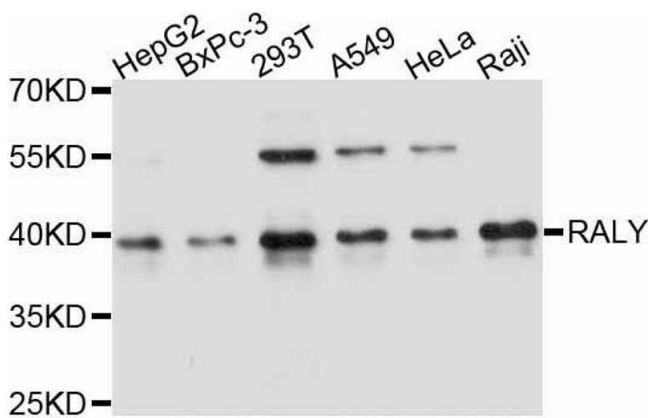
Storage: -20 °C

Storage Comment: Store at -20°C. Avoid freeze / thaw cycles.



### Western Blotting

**Image 1.** Western blot analysis of extracts of various cell lines, using RALY antibody (ABIN6134831, ABIN6146670, ABIN7101382 and ABIN7101383) at 1:1000 dilution. Secondary antibody: HRP Goat Anti-Rabbit IgG (H+L) (ABIN1684268 and ABIN3020597) at 1:10000 dilution. Lysates/proteins: 25 µg per lane. Blocking buffer: 3 % nonfat dry milk in TBST. Detection: ECL Basic Kit (RM00020). Exposure time: 90s.



### Western Blotting

**Image 2.** Western blot analysis of extracts of various cell lines, using RALY antibody.