

Datasheet for ABIN6135104 **anti-SH3PXD2A antibody**

2 Images



[Go to Product page](#)

Overview

Quantity:	100 µL
Target:	SH3PXD2A
Reactivity:	Human
Host:	Rabbit
Clonality:	Polyclonal
Conjugate:	This SH3PXD2A antibody is un-conjugated
Application:	Western Blotting (WB), Immunofluorescence (IF)

Product Details

Immunogen:	A synthetic peptide of human SH3PXD2A
Isotype:	IgG
Cross-Reactivity:	Human, Mouse
Characteristics:	Polyclonal Antibodies

Target Details

Target:	SH3PXD2A
Alternative Name:	SH3PXD2A (SH3PXD2A Products)
Background:	Adapter protein involved in invadopodia and podosome formation, extracellular matrix degradation and invasiveness of some cancer cells. Binds matrix metalloproteinases (ADAMs, NADPH oxidases (NOXs and phosphoinositides. Acts as an organizer protein that allows NOX1- or NOX3-dependent reactive oxygen species (ROS generation and ROS localization. In

Target Details

association with ADAM12, mediates the neurotoxic effect of amyloid-beta peptide.,SH3PXD2A,FISH,SH3MD1,TKS5,Signal Transduction,Kinase,Tyrosine kinases,Cell Biology & Developmental Biology,Ubiquitin,Neuroscience,Neurodegenerative Diseases,Amyloid Plaque and Neurofibrillary Tangle Formation in Alzheimer's Disease,SH3PXD2A

Molecular Weight: 102 kDa/121 kDa/125 kDa

Gene ID: 9644

UniProt: [Q5TCZ1](#)

Application Details

Application Notes: WB,1:500 - 1:2000,IF,1:50 - 1:200

Restrictions: For Research Use only

Handling

Format: Liquid

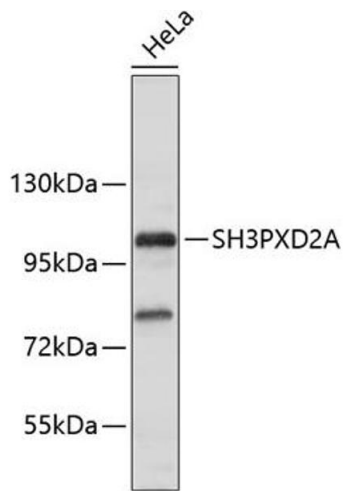
Buffer: PBS with 0.02 % sodium azide,50 % glycerol, pH 7.3.

Preservative: Sodium azide

Precaution of Use: This product contains Sodium azide: a POISONOUS AND HAZARDOUS SUBSTANCE which should be handled by trained staff only.

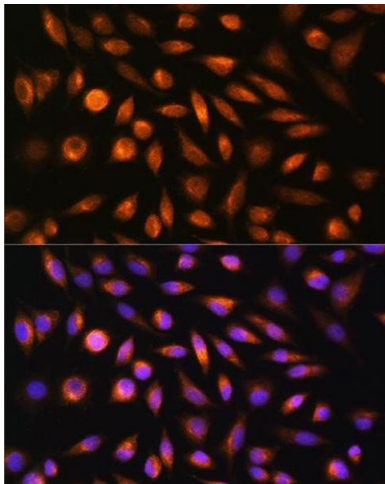
Storage: -20 °C

Storage Comment: Store at -20°C. Avoid freeze / thaw cycles.



Western Blotting

Image 1. Western blot analysis of extracts of HeLa cells, using SH3PXD2A antibody (ABIN6135104, ABIN6147731 and ABIN7101844). Secondary antibody: HRP Goat Anti-Rabbit IgG (H+L) (ABIN1684268 and ABIN3020597) at 1:10000 dilution. Lysates/proteins: 25 µg per lane. Blocking buffer: 3 % nonfat dry milk in TBST.



Immunofluorescence

Image 2. Immunofluorescence analysis of L929 cells using SH3PXD2A Rabbit pAb (ABIN6135104, ABIN6147731 and ABIN7101844) at dilution of 1:100. Blue: DAPI for nuclear staining.