



Datasheet for ABIN6135777

anti-LYZ antibody



[Go to Product page](#)

7 Images

Overview

Quantity:	100 µL
Target:	LYZ
Reactivity:	Human
Host:	Rabbit
Clonality:	Monoclonal
Conjugate:	This LYZ antibody is un-conjugated
Application:	Western Blotting (WB), Immunohistochemistry (IHC)

Product Details

Immunogen:	Recombinant protein of human Lysozyme (Lysozyme (LYZ))
Isotype:	IgG
Cross-Reactivity:	Human, Mouse, Rat
Characteristics:	Monoclonal Antibodies

Target Details

Target:	LYZ
Alternative Name:	LYZ (LYZ Products)
Background:	This gene encodes human lysozyme, whose natural substrate is the bacterial cell wall peptidoglycan (cleaving the beta[1-4]glycosidic linkages between N-acetylmuramic acid and N-acetylglucosamine). Lysozyme is one of the antimicrobial agents found in human milk, and is also present in spleen, lung, kidney, white blood cells, plasma, saliva, and tears. The protein has

Target Details

antibacterial activity against a number of bacterial species. Missense mutations in this gene have been identified in heritable renal amyloidosis.,LYZ,LYZF1,LZM,lysozyme,Immunology & Inflammation,Cell Intrinsic Innate Immunity Signaling Pathway,Cardiovascular,Blood,LYZ

Molecular Weight: 16 kDa

Gene ID: 4069

UniProt: [P61626](#)

Application Details

Application Notes: WB,1:5000 - 1:10000,IHC,1:50 - 1:200

Comment: HIGH QUALITY

Restrictions: For Research Use only

Handling

Format: Liquid

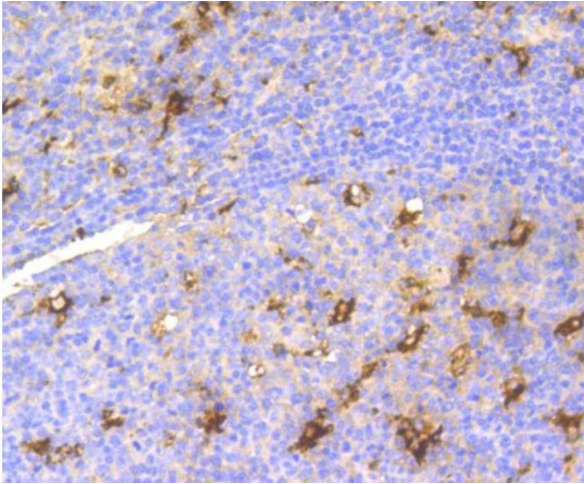
Buffer: PBS with 0.02 % sodium azide,50 % glycerol, pH 7.3.

Preservative: Sodium azide

Precaution of Use: This product contains Sodium azide: a POISONOUS AND HAZARDOUS SUBSTANCE which should be handled by trained staff only.

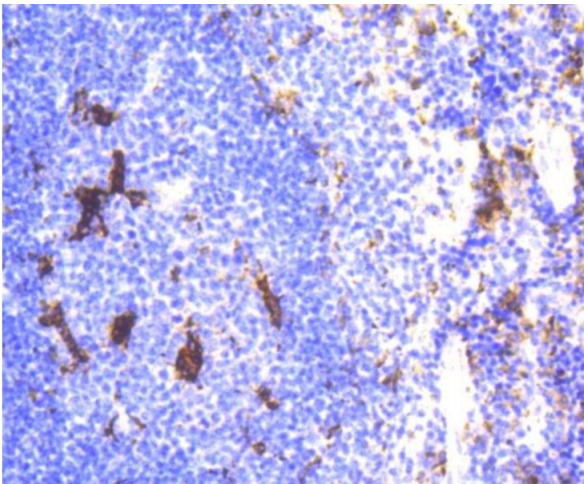
Storage: -20 °C

Storage Comment: Store at -20°C. Avoid freeze / thaw cycles.



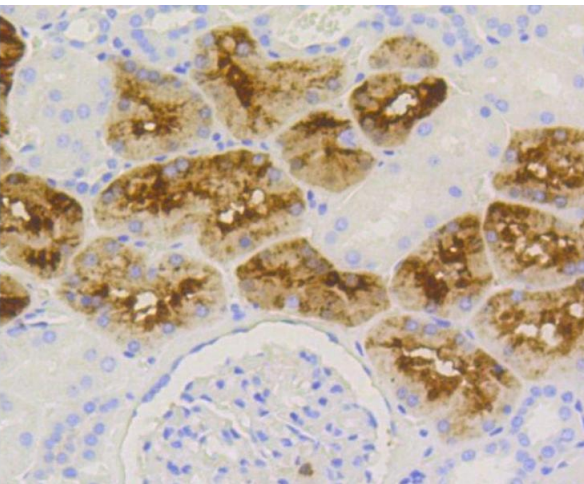
Immunohistochemistry (Paraffin-embedded Sections)

Image 1. Immunohistochemistry of paraffin-embedded human tonsil using LYZ antibody.



Immunohistochemistry (Paraffin-embedded Sections)

Image 2. Immunohistochemistry of paraffin-embedded mouse spleen using LYZ antibody.



Immunohistochemistry (Paraffin-embedded Sections)

Image 3. Immunohistochemistry of paraffin-embedded human kidney using LYZ antibody.

Please check the [product details page](#) for more images. Overall 7 images are available for ABIN6135777.