

Datasheet for ABIN6135858  
**anti-PKC alpha antibody**

## 3 Images

[Go to Product page](#)

## Overview

Quantity:	100 µL
Target:	PKC alpha (PKCa)
Reactivity:	Human
Host:	Rabbit
Clonality:	Monoclonal
Conjugate:	This PKC alpha antibody is un-conjugated
Application:	Western Blotting (WB), Immunohistochemistry (IHC), Immunoprecipitation (IP)

## Product Details

Immunogen:	Recombinant protein of human PKC alpha .
Isotype:	IgG
Cross-Reactivity:	Human, Mouse, Rat
Characteristics:	Monoclonal Antibodies

## Target Details

Target:	PKC alpha (PKCa)
Alternative Name:	PRKCA ( <a href="#">PKCa Products</a> )
Background:	Protein kinase C (PKC) is a family of serine- and threonine-specific protein kinases that can be activated by calcium and the second messenger diacylglycerol. PKC family members phosphorylate a wide variety of protein targets and are known to be involved in diverse cellular signaling pathways. PKC family members also serve as major receptors for phorbol esters, a

## Target Details

class of tumor promoters. Each member of the PKC family has a specific expression profile and is believed to play a distinct role in cells. The protein encoded by this gene is one of the PKC family members. This kinase has been reported to play roles in many different cellular processes, such as cell adhesion, cell transformation, cell cycle checkpoint, and cell volume control. Knockout studies in mice suggest that this kinase may be a fundamental regulator of cardiac contractility and Ca(2+) handling in myocytes.,PRKCA,AAG6,PKC-alpha,PKCA,PRKACA,PKC alpha,Epigenetics & Nuclear Signaling,Chromatin Modifying Enzymes,Phosphorylation,Cancer,Signal Transduction,G protein signaling,G2/M DNA Damage Checkpoint,Kinase,Serine/threonine kinases,mTOR Signaling Pathway,Phospholipase Signaling Pathway,Protein Kinase C Signaling Pathway,ErbB-HER Signaling Pathway,MAPK-Erk Signaling Pathway,Cell Biology & Developmental Biology,Apoptosis,Mitochondrial Control of Apoptosis,Inhibition of Apoptosis,Cell Adhesion,Cytoskeleton,Microtubules,Actins,TGF-b-Smad Signaling Pathway,Endocrine & Metabolism,Immunology & Inflammation,B Cell Receptor Signaling Pathway,Neuroscience,Amyloid Plaque and Neurofibrillary Tangle Formation in Alzheimer's Disease,Neurodegenerative Diseases Markers,Cardiovascular,Heart,Hypertrophy,PRKCA

Molecular Weight:	76 kDa
Gene ID:	5578
UniProt:	<a href="#">P17252</a>
Pathways:	<a href="#">WNT Signaling</a> , <a href="#">TCR Signaling</a> , <a href="#">EGFR Signaling Pathway</a> , <a href="#">Neurotrophin Signaling Pathway</a> , <a href="#">Thyroid Hormone Synthesis</a> , <a href="#">cAMP Metabolic Process</a> , <a href="#">Myometrial Relaxation and Contraction</a> , <a href="#">Cell-Cell Junction Organization</a> , <a href="#">Regulation of G-Protein Coupled Receptor Protein Signaling</a> , <a href="#">G-protein mediated Events</a> , <a href="#">Signaling Events mediated by VEGFR1 and VEGFR2</a> , <a href="#">Interaction of EGFR with phospholipase C-gamma</a> , <a href="#">Thromboxane A2 Receptor Signaling</a> , <a href="#">VEGFR1 Specific Signals</a> , <a href="#">VEGF Signaling</a>

## Application Details

Application Notes:	WB,1:500 - 1:2000,IHC,1:50 - 1:200,IP,1:50 - 1:200
Restrictions:	For Research Use only

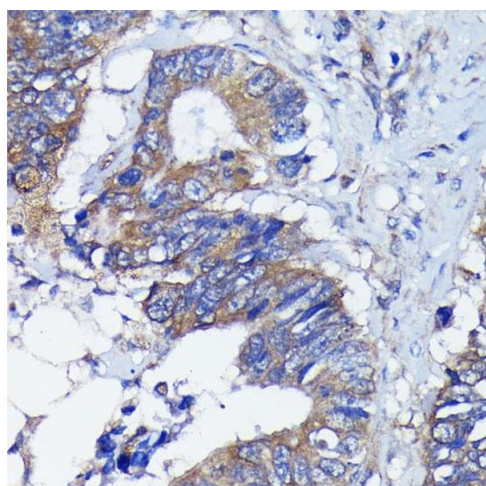
## Handling

Format:	Liquid
Buffer:	PBS with 0.02 % sodium azide,0.05 % BSA,50 % glycerol, pH 7.3.

## Handling

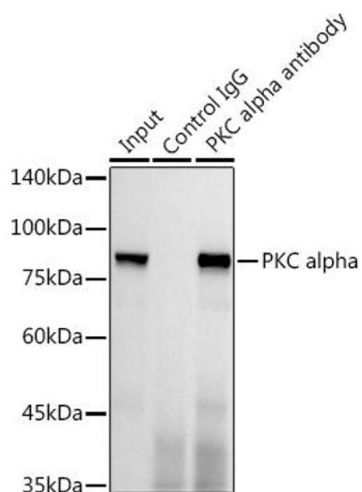
Preservative:	Sodium azide
Precaution of Use:	This product contains Sodium azide: a POISONOUS AND HAZARDOUS SUBSTANCE which should be handled by trained staff only.
Storage:	-20 °C
Storage Comment:	Store at -20°C. Avoid freeze / thaw cycles.

## Images



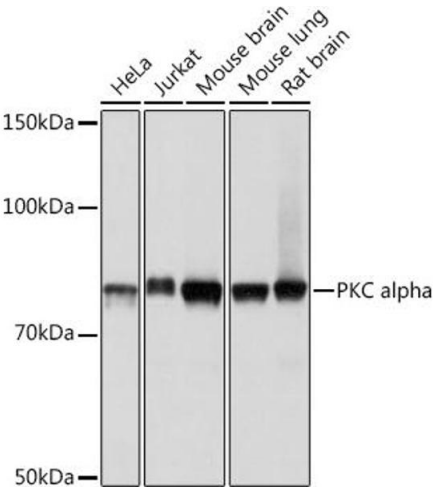
### Immunohistochemistry

**Image 1.** Immunohistochemistry of paraffin-embedded human colon carcinoma using PKC alpha antibody (ABIN6128460, ABIN6135858, ABIN6135859 and ABIN7101370) at dilution of 1:100 (40x lens). Perform microwave antigen retrieval with 10 mM PBS buffer pH 7.2 before commencing with IHC staining protocol.



### Immunoprecipitation

**Image 2.** Immunoprecipitation analysis of 300 µg extracts of HeLa cells using 3 µg PKC alpha antibody (ABIN6128460, ABIN6135858, ABIN6135859 and ABIN7101370). Western blot was performed from the immunoprecipitate using PKC alpha antibody (ABIN6128460, ABIN6135858, ABIN6135859 and ABIN7101370) at a dilution of 1:1000.



### Western Blotting

**Image 3.** Western blot analysis of extracts of various cell lines, using PKC alpha pAb (ABIN6128460, ABIN6135858, ABIN6135859 and ABIN7101370) at 1:1000 dilution. Secondary antibody: HRP Goat Anti-Rabbit IgG (H+L) (ABIN1684268 and ABIN3020597) at 1:10000 dilution. Lysates/proteins: 25 µg per lane. Blocking buffer: 3 % nonfat dry milk in TBST. Detection: ECL Basic Kit (RM00020). Exposure time: 1s.