

Datasheet for ABIN6136110
anti-INPP5D antibody (pTyr1020)[Go to Product page](#)

1 Image

Overview

Quantity:	100 µL
Target:	INPP5D
Binding Specificity:	pTyr1020
Reactivity:	Human
Host:	Rabbit
Clonality:	Polyclonal
Conjugate:	This INPP5D antibody is un-conjugated
Application:	Western Blotting (WB)

Product Details

Immunogen:	A synthetic phosphorylated peptide around Y1020 of human SHIP1 (NP_001017915.1).
Sequence:	ENPLY
Isotype:	IgG
Cross-Reactivity:	Human
Characteristics:	Phosphorylated Antibodies

Target Details

Target:	INPP5D
Alternative Name:	INPP5D (INPP5D Products)
Background:	This gene is a member of the inositol polyphosphate-5-phosphatase (INPP5) family and

Target Details

encodes a protein with an N-terminal SH2 domain, an inositol phosphatase domain, and two C-terminal protein interaction domains. Expression of this protein is restricted to hematopoietic cells where its movement from the cytosol to the plasma membrane is mediated by tyrosine phosphorylation. At the plasma membrane, the protein hydrolyzes the 5' phosphate from phosphatidylinositol (3,4,5)-trisphosphate and inositol-1,3,4,5-tetrakisphosphate, thereby affecting multiple signaling pathways. The protein is also partly localized to the nucleus, where it may be involved in nuclear inositol phosphate signaling processes. Overall, the protein functions as a negative regulator of myeloid cell proliferation and survival. Mutations in this gene are associated with defects and cancers of the immune system. Alternative splicing of this gene results in multiple transcript variants.,INPP5D,SHIP,SHIP-1,SHIP1,SIP-145,hp51CN,p150Ship,Epigenetics & Nuclear Signaling,Signal Transduction,Cell Biology & Developmental Biology,Apoptosis,Endocrine & Metabolism,Lipid Metabolism,Insulin Receptor Signaling Pathway,Immunology & Inflammation,B Cell Receptor Signaling Pathway,Protein phosphorylation,INPP5D

Molecular Weight: 109 kDa/133 kDa

Gene ID: 3635

UniProt: [Q92835](#)

Pathways: [TCR Signaling](#), [BCR Signaling](#), [Warburg Effect](#)

Application Details

Application Notes: WB,1:500 - 1:2000

Restrictions: For Research Use only

Handling

Format: Liquid

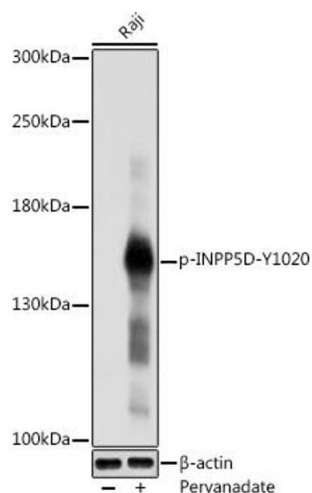
Buffer: PBS with 0.02 % sodium azide,50 % glycerol, pH 7.3.

Preservative: Sodium azide

Precaution of Use: This product contains Sodium azide: a POISONOUS AND HAZARDOUS SUBSTANCE which should be handled by trained staff only.

Storage: -20 °C

Storage Comment: Store at -20°C. Avoid freeze / thaw cycles.



Western Blotting

Image 1. Western blot analysis of extracts of Raji cells, using Phospho-SHIP1-Y1020 antibody (ABIN6135243, ABIN6136110, ABIN6136111 and ABIN6225677) at 1:1000 dilution. Raji cells were treated by Pervanadate (1 mM) at 37 °C for 30 minutes. Secondary antibody: HRP Goat Anti-Rabbit IgG (H+L) (ABIN1684268 and ABIN3020597) at 1:10000 dilution. Lysates/proteins: 25 µg per lane. Blocking buffer: 3 % nonfat dry milk in TBST. Detection: ECL Basic Kit (RM00020). Exposure time: 1s.