

Datasheet for ABIN6136172  
**anti-RPS6KA1 antibody (pSer380)**

## 3 Images

[Go to Product page](#)

## Overview

Quantity:	100 µL
Target:	RPS6KA1
Binding Specificity:	pSer380
Reactivity:	Human
Host:	Rabbit
Clonality:	Polyclonal
Conjugate:	This RPS6KA1 antibody is un-conjugated
Application:	Western Blotting (WB), Immunoprecipitation (IP)

## Product Details

Immunogen:	A synthetic phosphorylated peptide around S380 of human p90Rsk/RSK1/RPS6KA1 (NP_002944.2).
Sequence:	GFSFV
Isotype:	IgG
Cross-Reactivity:	Human, Mouse, Rat
Characteristics:	Phosphorylated Antibodies

## Target Details

Target:	RPS6KA1
Alternative Name:	RPS6KA1 ( <a href="#">RPS6KA1 Products</a> )

## Target Details

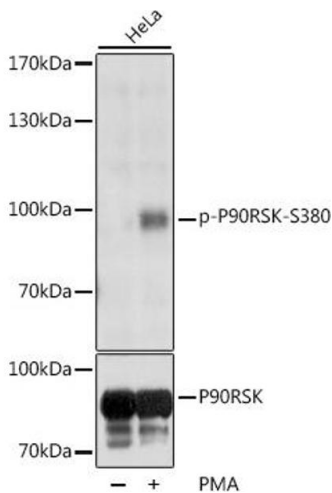
Background:	This gene encodes a member of the RSK (ribosomal S6 kinase) family of serine/threonine kinases. This kinase contains 2 nonidentical kinase catalytic domains and phosphorylates various substrates, including members of the mitogen-activated kinase (MAPK) signalling pathway. The activity of this protein has been implicated in controlling cell growth and differentiation. Alternate transcriptional splice variants, encoding different isoforms, have been characterized.,HU-1,MAPKAPK1A,RSK,RSK1,p90Rsk,RPS6KA1,Epigenetics & Nuclear Signaling,Translation Control,Regulation of eIF4 and p70 S6 Kinase,Signal Transduction,G protein signaling,G2/M DNA Damage Checkpoint,Kinase,Serine/threonine kinases,mTOR Signaling Pathway,MAPK-Erk Signaling Pathway,Cell Biology & Developmental Biology,Apoptosis,Mitochondrial Control of Apoptosis,Inhibition of Apoptosis,Cell Cycle,G2/M DNA Damage Checkpoint,Microtubules,Immunology & Inflammation,NF-kB Signaling Pathway,Neuroscience,Protein phosphorylation,RPS6KA1
Molecular Weight:	72 kDa/81 kDa/82 kDa/83 kDa
Gene ID:	6195
UniProt:	<a href="#">Q15418</a>
Pathways:	<a href="#">MAPK Signaling</a> , <a href="#">Neurotrophin Signaling Pathway</a> , <a href="#">Activation of Innate immune Response</a> , <a href="#">Toll-Like Receptors Cascades</a>

## Application Details

Application Notes:	WB,1:500 - 1:2000,IP,1:50 - 1:100
Comment:	HIGH QUALITY
Restrictions:	For Research Use only

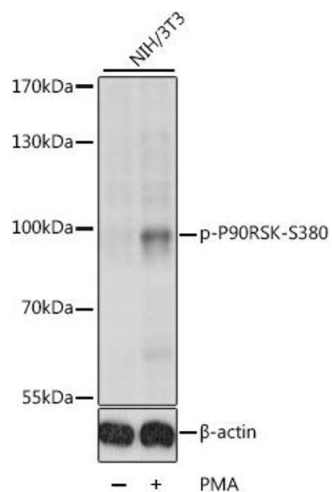
## Handling

Format:	Liquid
Buffer:	PBS with 0.02 % sodium azide,50 % glycerol, pH 7.3.
Preservative:	Sodium azide
Precaution of Use:	This product contains Sodium azide: a POISONOUS AND HAZARDOUS SUBSTANCE which should be handled by trained staff only.
Storage:	-20 °C
Storage Comment:	Store at -20°C. Avoid freeze / thaw cycles.



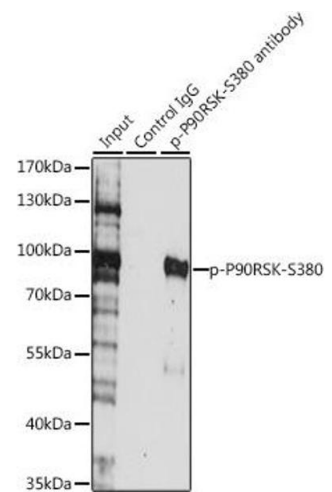
Western Blotting

**Image 1.** Western blot analysis of extracts of various cell lines, using Phospho-p90Rsk/RSK1/RPS6K-S380 antibody (ABIN6135275, ABIN6136172, ABIN6136173 and ABIN6225586) at 1:1000 dilution or RPS6K antibody (5718). HeLa cells were treated by PMA/TPA (200 nM) at 37 °C for 15 minutes after serum-starvation overnight. Secondary antibody: HRP Goat Anti-Rabbit IgG (H+L) (ABIN1684268 and ABIN3020597) at 1:10000 dilution. Lysates/proteins: 25 µg per lane. Blocking buffer: 3 % BSA. Detection: ECL Basic Kit (RM00020). Exposure time: 1s.



Western Blotting

**Image 2.** Western blot analysis of extracts of various cell lines, using Phospho-p90Rsk/RSK1/RPS6K-S380 antibody (ABIN6135275, ABIN6136172, ABIN6136173 and ABIN6225586) at 1:1000 dilution. NIH/3T3 cells were treated by PMA/TPA (200 nM) at 37 °C for 30 minutes after serum-starvation overnight. Secondary antibody: HRP Goat Anti-Rabbit IgG (H+L) (ABIN1684268 and ABIN3020597) at 1:10000 dilution. Lysates/proteins: 25 µg per lane. Blocking buffer: 3 % BSA. Detection: ECL Basic Kit (RM00020). Exposure time: 1s.



Immunoprecipitation

**Image 3.** Immunoprecipitation analysis of 200 µg extracts of HeLa cells, using 3 µg Phospho-p90Rsk/RSK1/RPS6K-S380 pAb (ABIN6135275, ABIN6136172, ABIN6136173 and ABIN6225586). Western blot was performed from the immunoprecipitate using Phospho-p90Rsk/RSK1/RPS6K-S380 pAb (ABIN6135275, ABIN6136172, ABIN6136173 and ABIN6225586) at a dilution of 1:1000. HeLa cells were treated by EGF (100 ng/mL) at 37 °C for 30 minutes after serum-starvation overnight.