



[Go to Product page](#)

Datasheet for ABIN6136302  
**anti-A1CF antibody (AA 50-120)**

4 Images

Overview

Quantity:	100 µL
Target:	A1CF
Binding Specificity:	AA 50-120
Reactivity:	Human
Host:	Rabbit
Clonality:	Polyclonal
Conjugate:	This A1CF antibody is un-conjugated
Application:	Western Blotting (WB), Immunohistochemistry (IHC)

Product Details

Immunogen:	Recombinant fusion protein containing a sequence corresponding to amino acids 50-120 of human A1CF (NP_055391.2).
Sequence:	APPERGCEIF IGKLPRLDFE DELIPLCEKI GKIYEMRMMM DFNGNNRGYA FVTFSNKVEA KNAIKQLNNY E
Isotype:	IgG
Cross-Reactivity:	Human, Mouse, Rat
Characteristics:	Polyclonal Antibodies
Purification:	Affinity purification

## Target Details

---

Target:	A1CF
Alternative Name:	A1CF ( <a href="#">A1CF Products</a> )
Background:	<p>Mammalian apolipoprotein B mRNA undergoes site-specific C to U deamination, which is mediated by a multi-component enzyme complex containing a minimal core composed of APOBEC-1 and a complementation factor encoded by this gene. The gene product has three non-identical RNA recognition motifs and belongs to the hnRNP R family of RNA-binding proteins. It has been proposed that this complementation factor functions as an RNA-binding subunit and docks APOBEC-1 to deaminate the upstream cytidine. Studies suggest that the protein may also be involved in other RNA editing or RNA processing events. Several transcript variants encoding a few different isoforms have been found for this gene.,A1CF,ACF,ACF64,ACF65,APOBEC1CF,ASP,Epigenetics &amp; Nuclear Signaling,A1CF</p>
Molecular Weight:	55 kDa/58 kDa/62 kDa/64 kDa/65 kDa
Gene ID:	29974
UniProt:	<a href="#">Q9NQ94</a>

## Application Details

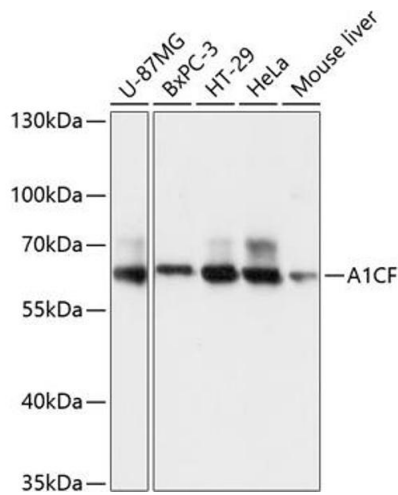
---

Application Notes:	WB,1:500 - 1:2000,IHC,1:50 - 1:200
Restrictions:	For Research Use only

## Handling

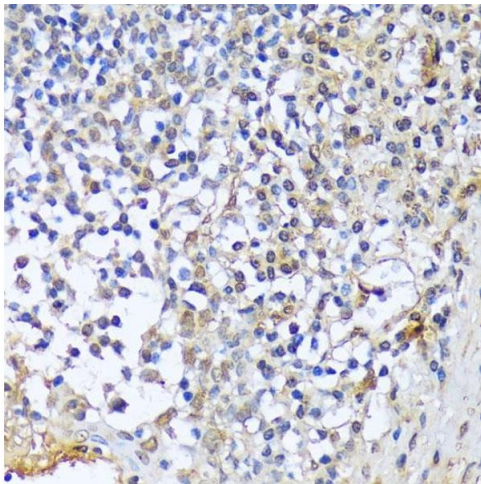
---

Format:	Liquid
Buffer:	PBS with 0.02 % sodium azide,50 % glycerol, pH 7.3.
Preservative:	Sodium azide
Precaution of Use:	This product contains Sodium azide: a POISONOUS AND HAZARDOUS SUBSTANCE which should be handled by trained staff only.
Storage:	-20 °C
Storage Comment:	Store at -20°C. Avoid freeze / thaw cycles.



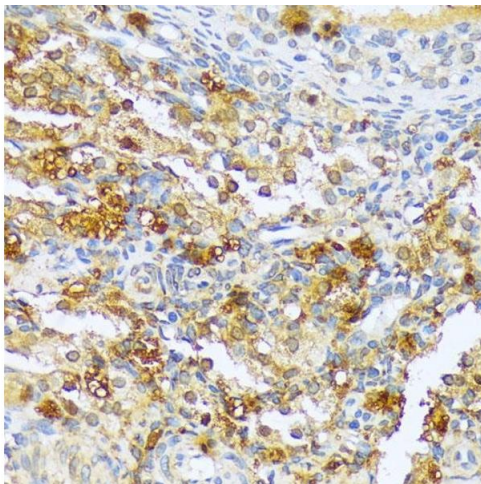
### Western Blotting

**Image 1.** Western blot analysis of extracts of various cell lines, using CF antibody (3087) at 1:3000 dilution. Secondary antibody: HRP Goat Anti-Rabbit IgG (H+L) (ABIN1684268 and ABIN3020597) at 1:10000 dilution. Lysates/proteins: 25 µg per lane. Blocking buffer: 3% nonfat dry milk in TBST. Detection: ECL Basic Kit (RM00020). Exposure time: 1s.



### Immunohistochemistry

**Image 2.** Immunohistochemistry of paraffin-embedded human tonsil using CF antibody (3087) at dilution of 1:100 (40x lens). Perform microwave antigen retrieval with 10 mM PBS buffer pH 7.2 before commencing with IHC staining protocol.



### Immunohistochemistry

**Image 3.** Immunohistochemistry of paraffin-embedded rat ovary using CF antibody (3087) at dilution of 1:100 (40x lens). Perform microwave antigen retrieval with 10 mM PBS buffer pH 7.2 before commencing with IHC staining protocol.

Please check the [product details page](#) for more images. Overall 4 images are available for ABIN6136302.