



[Go to Product page](#)

Datasheet for ABIN6136353
anti-ABCC1 antibody (AA 850-960)

2 Images

Overview

Quantity:	100 µL
Target:	ABCC1
Binding Specificity:	AA 850-960
Reactivity:	Human
Host:	Rabbit
Clonality:	Polyclonal
Conjugate:	This ABCC1 antibody is un-conjugated
Application:	Western Blotting (WB), Immunohistochemistry (IHC)

Product Details

Immunogen:	Recombinant fusion protein containing a sequence corresponding to amino acids 850-960 of human MRP1/ABCC1 (NP_004987.2).
Sequence:	GSYQELLARD GAFAEFLRTY ASTEQEQDAE ENGVTGVSGP GKEAKQMENG MLVTDSAGKQ LQRQLSSSSS YSGDISRHNN STAELQKAEA KKEETWKLME ADKAQTGQVK L
Isotype:	IgG
Cross-Reactivity:	Human, Rat
Characteristics:	Polyclonal Antibodies
Purification:	Affinity purification

Target Details

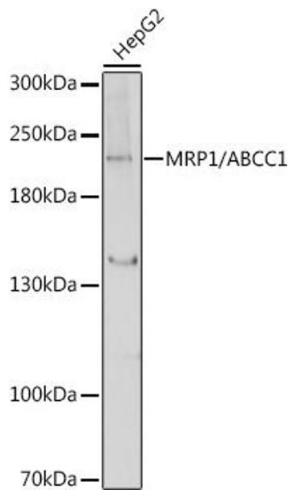
Target:	ABCC1
Alternative Name:	ABCC1 (ABCC1 Products)
Background:	<p>The protein encoded by this gene is a member of the superfamily of ATP-binding cassette (ABC) transporters. ABC proteins transport various molecules across extra-and intra-cellular membranes. ABC genes are divided into seven distinct subfamilies (ABC1, MDR/TAP, MRP, ALD, OABP, GCN20, White). This full transporter is a member of the MRP subfamily which is involved in multi-drug resistance. This protein functions as a multispecific organic anion transporter, with oxidized glutathione, cysteinyl leukotrienes, and activated aflatoxin B1 as substrates. This protein also transports glucuronides and sulfate conjugates of steroid hormones and bile salts. Alternatively spliced variants of this gene have been described but their full-length nature is unknown.,ABCC1,ABC29,ABCC,GS-X,MRP,MRP1,Cancer,Drug resistance,MRP-related proteins,Signal Transduction,Endocrine & Metabolism,Drug metabolism,Cardiovascular,Blood,Blood Pressure regulation,Heart,Cardiovascular diseases,Hypertension,Heart disease,ABCC1</p>
Molecular Weight:	151-172 kDa
Gene ID:	4363
UniProt:	P33527
Pathways:	SARS-CoV-2 Protein Interactome

Application Details

Application Notes:	WB,1:500 - 1:2000,IHC,1:50 - 1:200
Restrictions:	For Research Use only

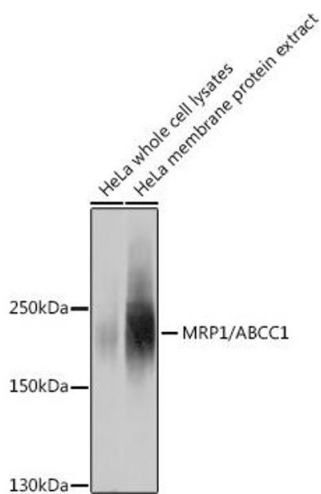
Handling

Format:	Liquid
Buffer:	PBS with 0.02 % sodium azide,50 % glycerol, pH 7.3.
Preservative:	Sodium azide
Precaution of Use:	This product contains Sodium azide: a POISONOUS AND HAZARDOUS SUBSTANCE which should be handled by trained staff only.
Storage:	-20 °C
Storage Comment:	Store at -20°C. Avoid freeze / thaw cycles.



Western Blotting

Image 1. Western blot analysis of extracts of HepG2 cells, using MRP1/ antibody (ABIN6129852, ABIN6136353, ABIN6136354 and ABIN6215081) at 1:1000 dilution. Secondary antibody: HRP Goat Anti-Rabbit IgG (H+L) (ABIN1684268 and ABIN3020597) at 1:10000 dilution. Lysates/proteins: 25 µg per lane. Blocking buffer: 3 % nonfat dry milk in TBST. Detection: ECL Basic Kit (RM00020). Exposure time: 5s.



Western Blotting

Image 2. Western blot analysis of extracts of HeLa cells, using MRP1/ antibody (ABIN6129852, ABIN6136353, ABIN6136354 and ABIN6215081) at 1:1000 dilution. Secondary antibody: HRP Goat Anti-Rabbit IgG (H+L) (ABIN1684268 and ABIN3020597) at 1:10000 dilution. Lysates/proteins: 25 µg per lane. Blocking buffer: 3 % nonfat dry milk in TBST. Detection: ECL Basic Kit (RM00020). Exposure time: 10s.