

Datasheet for ABIN6136367
anti-ABCC8 antibody (AA 700-1000)



[Go to Product page](#)

1 Image

Overview

Quantity:	100 µL
Target:	ABCC8
Binding Specificity:	AA 700-1000
Reactivity:	Human
Host:	Rabbit
Clonality:	Polyclonal
Conjugate:	This ABCC8 antibody is un-conjugated
Application:	Western Blotting (WB)

Product Details

Immunogen:	Recombinant fusion protein containing a sequence corresponding to amino acids 700-1000 of human ABCC8 (NP_000343.2).
Sequence:	TIRIPRGQLT MIVGQVGC GK SLLLLAALGE MQKVSGAVFW SSLPDSEIGE DPSPERETAT DLDIRKRGPV AYASQKPWLL NATVEENIIF ESPFNKQRYK MVIEACSLQP DIDILPHGDQ TQIGERGINL SGGQRQRISV ARALYQHANV VFLDDPFSA LDIHLSDHLMQ AGILELLRDD KRTVVLVTHK LQYLPHADWI IAMKDGTIQR EGTKLDFQRS ECQLFEHWKT LMNRQDQELE KETVTERKAT EPPQGLSRAM SSRDGLLQDE EEEEEEEAAES EEDDNLSSML HQRAEIPWRA C
Isotype:	IgG
Cross-Reactivity:	Mouse
Characteristics:	Polyclonal Antibodies
Purification:	Affinity purification

Target Details

Target:	ABCC8
Alternative Name:	ABCC8 (ABCC8 Products)
Background:	<p>The protein encoded by this gene is a member of the superfamily of ATP-binding cassette (ABC) transporters. ABC proteins transport various molecules across extra- and intra-cellular membranes. ABC genes are divided into seven distinct subfamilies (ABC1, MDR/TAP, MRP, ALD, OABP, GCN20, White). This protein is a member of the MRP subfamily which is involved in multi-drug resistance. This protein functions as a modulator of ATP-sensitive potassium channels and insulin release. Mutations and deficiencies in this protein have been observed in patients with hyperinsulinemic hypoglycemia of infancy, an autosomal recessive disorder of unregulated and high insulin secretion. Mutations have also been associated with non-insulin-dependent diabetes mellitus type II, an autosomal dominant disease of defective insulin secretion. Alternatively spliced transcript variants have been found for this gene.,ABCC8,ABC36,HHF1,HI,HRINS,MRP8,PHHI,SUR,SUR1,SUR1delta2,TNDM2,Cancer,Signal Transduction,Endocrine & Metabolism,Drug metabolism,Endocrine and metabolic diseases,Diabetes,Cardiovascular,Heart,Cardiac arrhythmias,Cardiovascular diseases,Heart disease,ABCC8</p>
Molecular Weight:	5 kDa/176 kDa/177 kDa
Gene ID:	6833
UniProt:	Q09428
Pathways:	Negative Regulation of Hormone Secretion

Application Details

Application Notes:	WB,1:500 - 1:2000
Restrictions:	For Research Use only

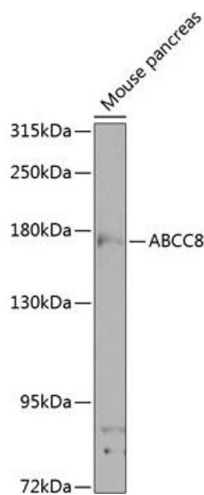
Handling

Format:	Liquid
Buffer:	PBS with 0.02 % sodium azide,50 % glycerol, pH 7.3.
Preservative:	Sodium azide
Precaution of Use:	This product contains Sodium azide: a POISONOUS AND HAZARDOUS SUBSTANCE which should be handled by trained staff only.

Handling

Storage:	-20 °C
Storage Comment:	Store at -20°C. Avoid freeze / thaw cycles.

Images



Western Blotting

Image 1. Western blot analysis of extracts of mouse pancreas, using antibody (ABIN6129856, ABIN6136367, ABIN6136368 and ABIN6224521) at 1:1000 dilution. Secondary antibody: HRP Goat Anti-Rabbit IgG (H+L) (ABIN1684268 and ABIN3020597) at 1:10000 dilution. Lysates/proteins: 25 µg per lane. Blocking buffer: 3 % nonfat dry milk in TBST. Detection: ECL Basic Kit (RM00020). Exposure time: 60s.