



[Go to Product page](#)

Datasheet for ABIN6136470  
**anti-ACSS3 antibody (AA 30-280)**

1 Image

Overview

Quantity:	100 µL
Target:	ACSS3
Binding Specificity:	AA 30-280
Reactivity:	Human
Host:	Rabbit
Clonality:	Polyclonal
Conjugate:	This ACSS3 antibody is un-conjugated
Application:	Western Blotting (WB)

Product Details

Immunogen:	Recombinant fusion protein containing a sequence corresponding to amino acids 30-280 of human ACSS3 (NP_078836.1).
Sequence:	AGAALRALVV PGPARGGLGGR GCRALSSGSG SEYKTHFAAS VTDPERFWGK AAEQISWYKP WTKTLENKHS PSTRWFVEGM LNICYNAVDR HIENGKGDKI AIIYDSPVTN TKATFTYKEV LEQVSKLAGV LVKHGIKKGD TVVIYMPMIP QAMYTMLACA RIGAIHSLIF GGFASKELSS RIDHVKPKVV VTASFGIEPG RRVEYVPLVE EALKIGQHQP DKILIYNRPN MEAVPLAPGR DLDWDEEMAK A
Isotype:	IgG
Cross-Reactivity:	Mouse, Rat
Characteristics:	Polyclonal Antibodies
Purification:	Affinity purification

## Target Details

---

Target:	ACSS3
Alternative Name:	ACSS3 ( <a href="#">ACSS3 Products</a> )
Background:	Catalyzes the synthesis of acetyl-CoA from short-chain fatty acids. Propionate is the preferred substrate. Can utilize acetate and butyrate with a much lower affinity (By similarity.,ACSS3,Cancer,Signal Transduction,Endocrine & Metabolism,Mitochondrial metabolism,Mitochondrial markers,ACSS3
Molecular Weight:	40 kDa/74 kDa
Gene ID:	79611
UniProt:	<a href="#">Q9H6R3</a>

## Application Details

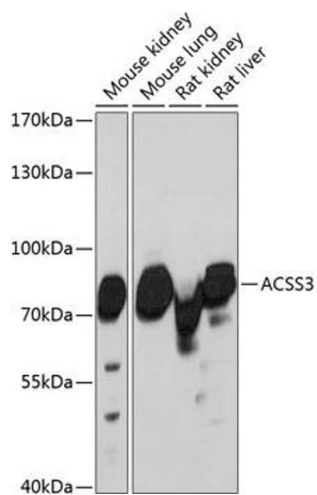
---

Application Notes:	WB,1:500 - 1:2000
Restrictions:	For Research Use only

## Handling

---

Format:	Liquid
Buffer:	PBS with 0.02 % sodium azide,50 % glycerol, pH 7.3.
Preservative:	Sodium azide
Precaution of Use:	This product contains Sodium azide: a POISONOUS AND HAZARDOUS SUBSTANCE which should be handled by trained staff only.
Storage:	-20 °C
Storage Comment:	Store at -20°C. Avoid freeze / thaw cycles.



### Western Blotting

**Image 1.** Western blot analysis of extracts of various cell lines, using antibody (ABIN6131412, ABIN6136470, ABIN6136471 and ABIN6217898) at 1:3000 dilution. Secondary antibody: HRP Goat Anti-Rabbit IgG (H+L) (ABIN1684268 and ABIN3020597) at 1:10000 dilution. Lysates/proteins: 25 µg per lane. Blocking buffer: 3 % nonfat dry milk in TBST. Detection: ECL Basic Kit (RM00020). Exposure time: 30s.