



[Go to Product page](#)

Datasheet for ABIN6136521
anti-ADAM12 antibody (AA 589-738)

7 Images

Overview

| | |
|----------------------|--|
| Quantity: | 100 µL |
| Target: | ADAM12 |
| Binding Specificity: | AA 589-738 |
| Reactivity: | Human |
| Host: | Rabbit |
| Clonality: | Polyclonal |
| Conjugate: | This ADAM12 antibody is un-conjugated |
| Application: | Western Blotting (WB), Immunohistochemistry (IHC), Immunofluorescence (IF) |

Product Details

| | |
|-------------------|--|
| Immunogen: | Recombinant fusion protein containing a sequence corresponding to amino acids 589-738 of human ADAM12 (NP_067673.2). |
| Sequence: | ASRPVIGTNA VSIETNIPLQ QGGRILCRGT HVYLGDDMPD PGLVLAGTKC ADGKICLNKQ CQNISVFGVH ECAMQCHGRG VCNNRKNCHC EAHWAPPFCD KFGFGGSTDS GPIRQAEARQ EAAESNRERG QGQEPVGSQE HASTASLTLI |
| Isotype: | IgG |
| Cross-Reactivity: | Human, Mouse, Rat |
| Characteristics: | Polyclonal Antibodies |
| Purification: | Affinity purification |

Target Details

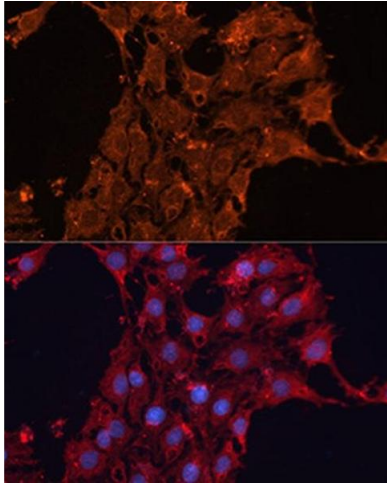
| | |
|-------------------|---|
| Target: | ADAM12 |
| Alternative Name: | ADAM12 (ADAM12 Products) |
| Background: | <p>This gene encodes a member of a family of proteins that are structurally related to snake venom disintegrins and have been implicated in a variety of biological processes involving cell-cell and cell-matrix interactions, including fertilization, muscle development, and neurogenesis. Expression of this gene has been used as a maternal serum marker for pre-natal development. Alternative splicing results in multiple transcript variants encoding different isoforms. Shorter isoforms are secreted, while longer isoforms are membrane-bound form.,ADAM12,ADAM12-OT1,CAR10,MCMP,MCMPMltna,MLTN,MLTNA,Cancer,Invasion and Metastasis,Signal Transduction,Cell Biology & Developmental Biology,Cell Adhesion,Cytoskeleton,Extracellular Matrix,ADAM Protein Family,Ubiquitin,ADAM12</p> |
| Molecular Weight: | 80 kDa/99 kDa |
| Gene ID: | 8038 |
| UniProt: | O43184 |
| Pathways: | EGFR Signaling Pathway |

Application Details

| | |
|--------------------|---|
| Application Notes: | WB,1:500 - 1:2000,IHC,1:100 - 1:200,IF,1:50 - 1:200 |
| Comment: | HIGH QUALITY |
| Restrictions: | For Research Use only |

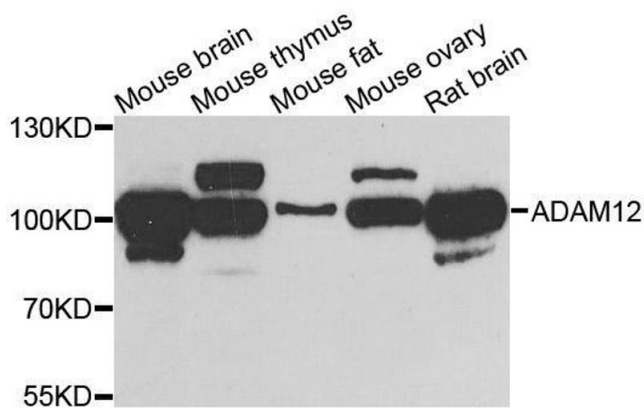
Handling

| | |
|--------------------|--|
| Format: | Liquid |
| Buffer: | PBS with 0.02 % sodium azide,50 % glycerol, pH 7.3. |
| Preservative: | Sodium azide |
| Precaution of Use: | This product contains Sodium azide: a POISONOUS AND HAZARDOUS SUBSTANCE which should be handled by trained staff only. |
| Storage: | -20 °C |
| Storage Comment: | Store at -20°C. Avoid freeze / thaw cycles. |



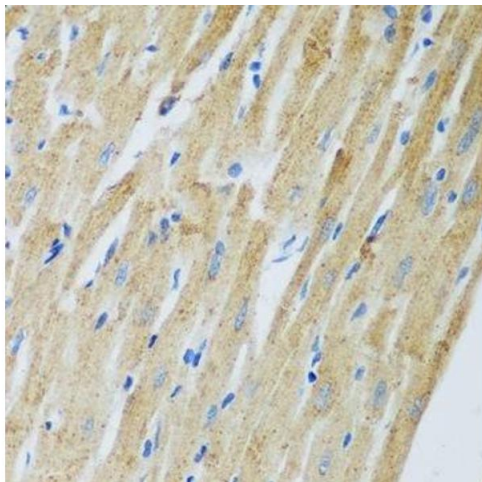
Immunofluorescence

Image 1. Immunofluorescence analysis of C6 cells using antibody (ABIN6131156, ABIN6136521, ABIN6136522 and ABIN6223942) at dilution of 1:100. Blue: DAPI for nuclear staining.



Western Blotting

Image 2. Western blot analysis of extracts of various cell lines, using ADAM12 antibody.



Immunohistochemistry (Paraffin-embedded Sections)

Image 3. Immunohistochemistry of paraffin-embedded rat heart using ADAM12 antibody.

Please check the [product details page](#) for more images. Overall 7 images are available for ABIN6136521.