



[Go to Product page](#)

Datasheet for ABIN6136557
anti-ADCY1 antibody (AA 470-610)

1 Image

Overview

Quantity:	100 µL
Target:	ADCY1
Binding Specificity:	AA 470-610
Reactivity:	Human
Host:	Rabbit
Clonality:	Polyclonal
Conjugate:	This ADCY1 antibody is un-conjugated
Application:	Western Blotting (WB)

Product Details

Immunogen:	Recombinant fusion protein containing a sequence corresponding to amino acids 470-610 of human ADCY1 (NP_066939.1).
Sequence:	NIETFFIVPS HRRKIFPGLI LSDIKPAKRM KFKTVCYLLV QLMHCRKMFK AEIPFSNVMT CEDDDKRRAL RTASEKLRNR SSFSTNVVYT TPGTRVNRYI SRLLEARQTE LEMADLNFFT LKYKHVEREQ KYHQLQDEYF T
Isotype:	IgG
Cross-Reactivity:	Human, Mouse
Characteristics:	Polyclonal Antibodies
Purification:	Affinity purification

Target Details

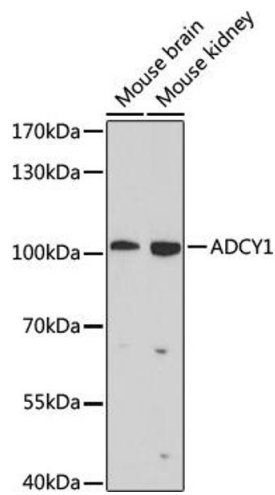
Target:	ADCY1
Alternative Name:	ADCY1 (ADCY1 Products)
Background:	This gene encodes a member of the of adenylate cyclase gene family that is primarily expressed in the brain. This protein is regulated by calcium/calmodulin concentration and may be involved in brain development. Alternate splicing results in multiple transcript variants.,ADCY1,AC1,DFNB44,Cancer,Signal Transduction,G protein signaling,Signal Transduction,G2/M DNA Damage Checkpoint,Endocrine & Metabolism,Neuroscience,Neurodegenerative Diseases,Dopamine Signaling in Parkinson's Disease,ADCY1
Molecular Weight:	123 kDa
Gene ID:	107
UniProt:	Q08828
Pathways:	EGFR Signaling Pathway , Neurotrophin Signaling Pathway , Thyroid Hormone Synthesis , cAMP Metabolic Process , Myometrial Relaxation and Contraction , G-protein mediated Events , Interaction of EGFR with phospholipase C-gamma

Application Details

Application Notes:	WB,1:200 - 1:1000
Comment:	HIGH QUALITY
Restrictions:	For Research Use only

Handling

Format:	Liquid
Buffer:	PBS with 0.02 % sodium azide,50 % glycerol, pH 7.3.
Preservative:	Sodium azide
Precaution of Use:	This product contains Sodium azide: a POISONOUS AND HAZARDOUS SUBSTANCE which should be handled by trained staff only.
Storage:	-20 °C
Storage Comment:	Store at -20°C. Avoid freeze / thaw cycles.



Western Blotting

Image 1. Western blot analysis of extracts of various cell lines, using antibody (ABIN6129203, ABIN6136557, ABIN6136558 and ABIN6225082) at 1:1000 dilution. Secondary antibody: HRP Goat Anti-Rabbit IgG (H+L) (ABIN1684268 and ABIN3020597) at 1:10000 dilution. Lysates/proteins: 25 µg per lane. Blocking buffer: 3 % nonfat dry milk in TBST. Detection: ECL Enhanced Kit (RM00021). Exposure time: 90s.