



[Go to Product page](#)

Datasheet for ABIN6136571

anti-G Protein-Coupled Receptor 133 antibody (AA 805-874)

1 Image

Overview

Quantity:	100 µL
Target:	G Protein-Coupled Receptor 133 (GPR133)
Binding Specificity:	AA 805-874
Reactivity:	Human
Host:	Rabbit
Clonality:	Polyclonal
Conjugate:	This G Protein-Coupled Receptor 133 antibody is un-conjugated
Application:	Western Blotting (WB)

Product Details

Immunogen:	Recombinant fusion protein containing a sequence corresponding to amino acids 805-874 of human ADGRD1 (NP_942122.2).
Sequence:	FHCLLNSEVR AAFKHKTKVW SLTSSSARTS NAKPFHSDLM NGTRPGMAST KLSPWDKSSH SAHRVDLSAV
Isotype:	IgG
Cross-Reactivity:	Human, Mouse, Rat
Characteristics:	Polyclonal Antibodies
Purification:	Affinity purification

Target Details

Target: G Protein-Coupled Receptor 133 (GPR133)

Alternative Name: ADGRD1 ([GPR133 Products](#))

Background: The adhesion G-protein-coupled receptors (GPCRs), including GPR133, are membrane-bound proteins with long N termini containing multiple domains. GPCRs, or GPRs, contain 7 transmembrane domains and transduce extracellular signals through heterotrimeric G proteins (summary by Bjarnadottir et al., 2004 [PubMed 15203201]).[supplied by OMIM, Nov 2010],ADGRD1,GPR133,PGR25,Signal Transduction,G protein signaling,G-Protein-Coupled Receptors(GPCR),ADGRD1

Molecular Weight: 43 kDa/61 kDa/96 kDa/99 kDa

Gene ID: 283383

UniProt: [Q6QNK2](#)

Application Details

Application Notes: WB,1:500 - 1:2000

Restrictions: For Research Use only

Handling

Format: Liquid

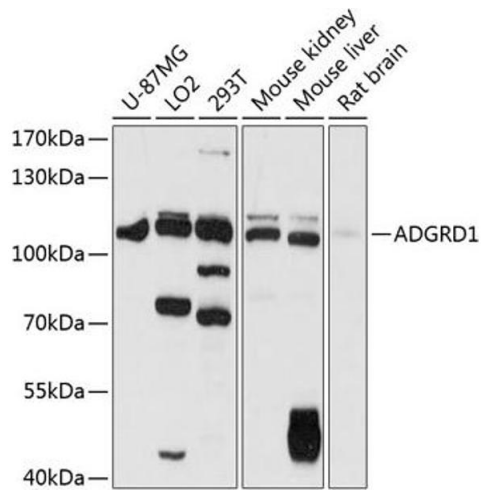
Buffer: PBS with 0.02 % sodium azide,50 % glycerol, pH 7.3.

Preservative: Sodium azide

Precaution of Use: This product contains Sodium azide: a POISONOUS AND HAZARDOUS SUBSTANCE which should be handled by trained staff only.

Storage: -20 °C

Storage Comment: Store at -20°C. Avoid freeze / thaw cycles.



Western Blotting

Image 1. Western blot analysis of extracts of various cell lines, using antibody (ABIN6127782, ABIN6136571, ABIN6136572 and ABIN6216331) at 1:1000 dilution. Secondary antibody: HRP Goat Anti-Rabbit IgG (H+L) (ABIN1684268 and ABIN3020597) at 1:10000 dilution. Lysates/proteins: 25 µg per lane. Blocking buffer: 3% nonfat dry milk in TBST. Detection: ECL Basic Kit (RM00020). Exposure time: 5s.