



[Go to Product page](#)

Datasheet for ABIN6136587
anti-ADPRH antibody (AA 180-270)

1 Image

Overview

Quantity:	100 µL
Target:	ADPRH
Binding Specificity:	AA 180-270
Reactivity:	Human
Host:	Rabbit
Clonality:	Polyclonal
Conjugate:	This ADPRH antibody is un-conjugated
Application:	Western Blotting (WB)

Product Details

Immunogen:	Recombinant fusion protein containing a sequence corresponding to amino acids 180-270 of human ADPRH (NP_001116.1).
Sequence:	AYAVNSRPPL QWGKGLMELL PEAKKYIVQS GYFVEENLQH WSYFQTKWEN YLKLRGILDG ESAPTFPESF GVKERDQFYT SLSYSGWGGG S
Isotype:	IgG
Cross-Reactivity:	Human, Mouse, Rat
Characteristics:	Polyclonal Antibodies
Purification:	Affinity purification

Target Details

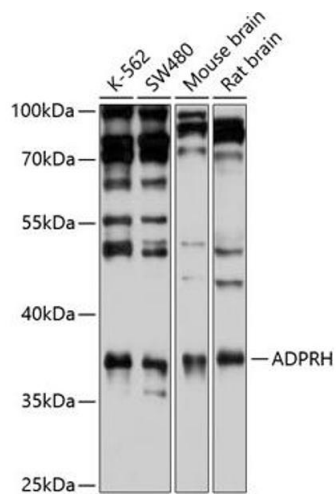
Target:	ADPRH
Alternative Name:	ADPRH (ADPRH Products)
Background:	The enzyme encoded by this gene catalyzes removal of mono-ADP-ribose from arginine residues of proteins in the ADP-ribosylation cycle. Unlike the rat and mouse enzymes that require DTT for maximal activity, the human enzyme is DTT-independent. Alternatively spliced transcript variants that encode different protein isoforms have been described.,ADPRH,ARH1,Epigenetics & Nuclear Signaling,ADPRH
Molecular Weight:	39 kDa
Gene ID:	141
UniProt:	P54922

Application Details

Application Notes:	WB,1:500 - 1:2000
Restrictions:	For Research Use only

Handling

Format:	Liquid
Buffer:	PBS with 0.02 % sodium azide,50 % glycerol, pH 7.3.
Preservative:	Sodium azide
Precaution of Use:	This product contains Sodium azide: a POISONOUS AND HAZARDOUS SUBSTANCE which should be handled by trained staff only.
Storage:	-20 °C
Storage Comment:	Store at -20°C. Avoid freeze / thaw cycles.



Western Blotting

Image 1. Western blot analysis of extracts of various cell lines, using ADPRH antibody (ABIN6129880, ABIN6136587, ABIN6136588 and ABIN6221872) at 1:1000 dilution. Secondary antibody: HRP Goat Anti-Rabbit IgG (H+L) (ABIN1684268 and ABIN3020597) at 1:10000 dilution. Lysates/proteins: 25 µg per lane. Blocking buffer: 3 % nonfat dry milk in TBST. Detection: ECL Basic Kit (RM00020). Exposure time: 15s.