

Datasheet for ABIN6136604  
**anti-ADSS antibody (AA 1-280)**



[Go to Product page](#)

6 Images

Overview

Quantity:	100 µL
Target:	ADSS
Binding Specificity:	AA 1-280
Reactivity:	Human
Host:	Rabbit
Clonality:	Polyclonal
Conjugate:	This ADSS antibody is un-conjugated
Application:	Western Blotting (WB), Immunofluorescence (IF), Immunohistochemistry (IHC)

Product Details

Immunogen:	Recombinant fusion protein containing a sequence corresponding to amino acids 1-280 of human ADSS (NP_001117.2).
Sequence:	MAFAETYPAA SSLPNGDCGR PRARPGGNRV TVVLGAQWGD EGKGKVVDLL AQDADIVCRC QGGNNAGHTV VVDSVEYDFH LLPSGIINPN VTAFINGV VV IHLPGLFEEA EKNVQKKGKGL EGWEKRLIIS DRAHIVDFDH QAADGIQEQQ RQEQAGKNLG TTKKGIGPVY SSKAARSGLR MCDLVSDFDG FSERFKVLAN QYKSIYPTLE IDIEGELQKL KGYMEKIKPM VRDGVYFLYE ALHGPPKKIL VEGANAALLD IDFGTYPFVT SSNCTVGGVC
Isotype:	IgG
Cross-Reactivity:	Human, Mouse
Characteristics:	Polyclonal Antibodies
Purification:	Affinity purification

## Target Details

---

Target:	ADSS
Alternative Name:	ADSS ( <a href="#">ADSS Products</a> )
Background:	This gene encodes the enzyme adenylosuccinate synthetase which catalyzes the first committed step in the conversion of inosine monophosphate to adenosine monophosphate. A pseudogene of this gene is found on chromosome 17.,ADSS,ADEH,ADSS 2,ADSS2,Epigenetics & Nuclear Signaling,ADSS
Molecular Weight:	50 kDa
Gene ID:	159
UniProt:	<a href="#">P30520</a>
Pathways:	<a href="#">Ribonucleoside Biosynthetic Process</a>

## Application Details

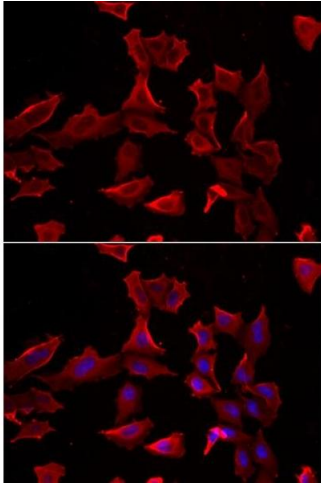
---

Application Notes:	WB,1:500 - 1:2000,IHC,1:50 - 1:100,IF,1:50 - 1:100
Comment:	HIGH QUALITY
Restrictions:	For Research Use only

## Handling

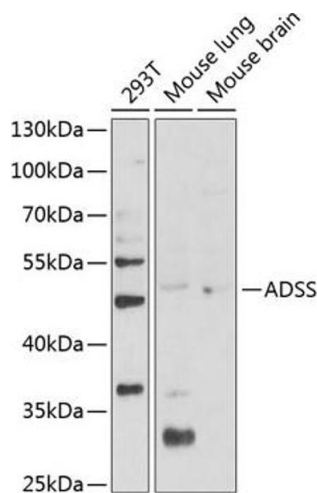
---

Format:	Liquid
Buffer:	PBS with 0.02 % sodium azide,50 % glycerol, pH 7.3.
Preservative:	Sodium azide
Precaution of Use:	This product contains Sodium azide: a POISONOUS AND HAZARDOUS SUBSTANCE which should be handled by trained staff only.
Storage:	-20 °C
Storage Comment:	Store at -20°C. Avoid freeze / thaw cycles.



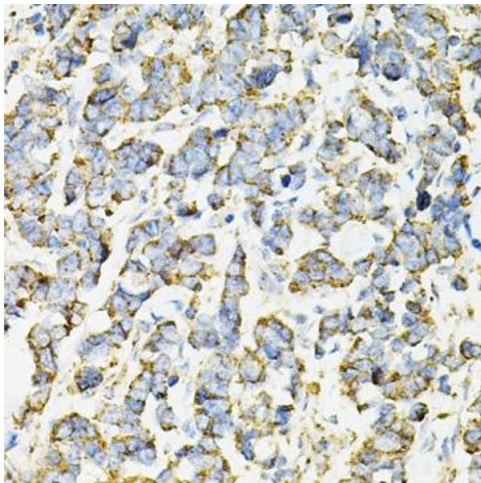
### Immunofluorescence

**Image 1.** Immunofluorescence analysis of HeLa cells using ADSS antibody (ABIN6131467, ABIN6136604, ABIN6136606 and ABIN6216015). Blue: DAPI for nuclear staining.



### Western Blotting

**Image 2.** Western blot analysis of extracts of various cell lines, using ADSS Antibody (ABIN6131467, ABIN6136604, ABIN6136606 and ABIN6216015) at 1:1000 dilution. Secondary antibody: HRP Goat Anti-Rabbit IgG (H+L) (ABIN1684268 and ABIN3020597) at 1:10000 dilution. Lysates/proteins: 25 µg per lane. Blocking buffer: 3 % nonfat dry milk in TBST. Detection: ECL Basic Kit (RM00020). Exposure time: 90s.



### Immunohistochemistry

**Image 3.** Immunohistochemistry of paraffin-embedded human lung cancer using ADSS antibody (ABIN6131467, ABIN6136604, ABIN6136606 and ABIN6216015) at dilution of 1:100 (40x lens). Perform microwave antigen retrieval with 10 mM PBS buffer pH 7.2 before commencing with IHC staining protocol.

Please check the [product details page](#) for more images. Overall 6 images are available for ABIN6136604.