

Datasheet for ABIN6136610
anti-AES antibody (AA 1-264)



[Go to Product page](#)

1 Image

Overview

Quantity:	100 µL
Target:	AES
Binding Specificity:	AA 1-264
Reactivity:	Human
Host:	Rabbit
Clonality:	Polyclonal
Conjugate:	This AES antibody is un-conjugated
Application:	Western Blotting (WB)

Product Details

Immunogen:	Recombinant fusion protein containing a sequence corresponding to amino acids 1-264 of human AES (NP_945320.1).
Sequence:	MCHKNGFPQE GGITAAFLQK RKLRLSKNHR PARAKVTEHV RGTRPGRATA GPAASTRAAG SLFFDRWGNR GPAGCRGSSH LPQQLKFTTS DSCDRIKDEF QLLQAQYHSL KLECDKLASE KSEMQRHYVM YYEMSYGLNI EMHKQAEIVK RLNGICAQVL PYLSQEHQQQ VLGAIERAKQ VTAPELNSII RQQLQAHQLS QLQALALPLT PLPVGLQPPS LPAVSAGTGL LSLSALGSQA HLSKEDKNGH DGDTHQEDDG EKSD
Isotype:	IgG
Cross-Reactivity:	Human, Mouse
Characteristics:	Polyclonal Antibodies
Purification:	Affinity purification

Target Details

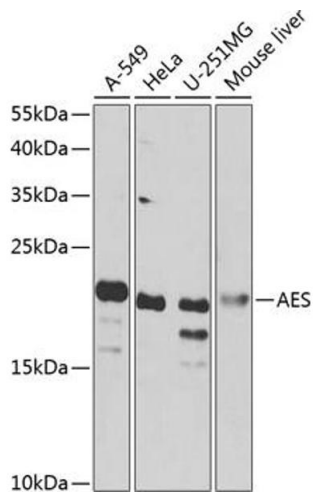
Target:	AES
Alternative Name:	AES (AES Products)
Background:	<p>The protein encoded by this gene is similar in sequence to the amino terminus of Drosophila enhancer of split groucho, a protein involved in neurogenesis during embryonic development. The encoded protein, which belongs to the groucho/TLE family of proteins, can function as a homooligomer or as a heterooligomer with other family members to dominantly repress the expression of other family member genes. Three transcript variants encoding different isoforms have been found for this gene.,AES,AES-1,AES-2,ESP1,GRG,GRG5,Grg-5,TLE5,Epigenetics & Nuclear Signaling,Stem Cells,AES</p>
Molecular Weight:	21 kDa/29 kDa
Gene ID:	166
UniProt:	Q08117
Pathways:	WNT Signaling , SARS-CoV-2 Protein Interactome

Application Details

Application Notes:	WB,1:500 - 1:2000
Comment:	HIGH QUALITY
Restrictions:	For Research Use only

Handling

Format:	Liquid
Buffer:	PBS with 0.02 % sodium azide,50 % glycerol, pH 7.3.
Preservative:	Sodium azide
Precaution of Use:	This product contains Sodium azide: a POISONOUS AND HAZARDOUS SUBSTANCE which should be handled by trained staff only.
Storage:	-20 °C
Storage Comment:	Store at -20°C. Avoid freeze / thaw cycles.



Western Blotting

Image 1. Western blot analysis of extracts of various cell lines, using AES antibody at 1:1000 dilution. Secondary antibody: HRP Goat Anti-Rabbit IgG (H+L) (ABIN1684268 and ABIN3020597) at 1:10000 dilution. Lysates/proteins: 25 µg per lane. Blocking buffer: 3% nonfat dry milk in TBST. Detection: ECL Basic Kit (RM00020). Exposure time: 90s.