

Datasheet for ABIN6136700
anti-Adenylate Kinase 3 antibody (AA 1-227)



[Go to Product page](#)

1 Image

Overview

Quantity:	100 µL
Target:	Adenylate Kinase 3 (AK3)
Binding Specificity:	AA 1-227
Reactivity:	Human
Host:	Rabbit
Clonality:	Polyclonal
Conjugate:	This Adenylate Kinase 3 antibody is un-conjugated
Application:	Western Blotting (WB)

Product Details

Immunogen:	Recombinant fusion protein containing a sequence corresponding to amino acids 1-227 of human AK3 (NP_057366.2).
Sequence:	MGASARLLRA VIMGAPGSGK GTVSSRITTH FELKHLSSGD LLRDNMLRGT EIGVLAKAFI DQGKLI PDDV MTRLALHELK NLTQYSWLLD GFRPTLPQAE ALDRAYQIDT VINLNVPFEV IKQRLTARWI HPASGRVYNI EFNPPKTVGI DDLTGEPLIQ REDDKPETVI KRLKAYEDQT KPVLEYQKK GVLETFSGTE TNKIWPYVYA FLQTKVPQRS QKASVTP
Isotype:	IgG
Cross-Reactivity:	Human, Mouse, Rat
Characteristics:	Polyclonal Antibodies
Purification:	Affinity purification

Target Details

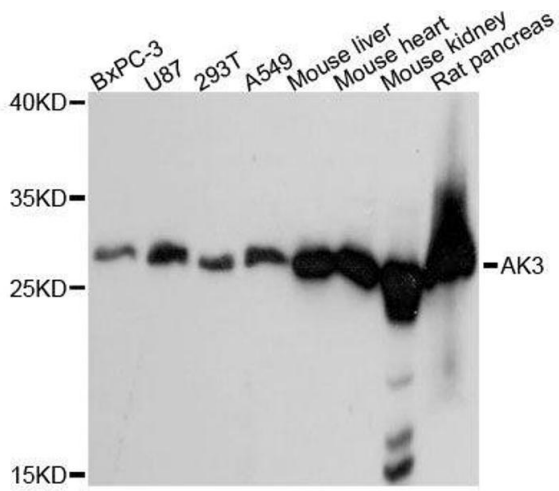
Target:	Adenylate Kinase 3 (AK3)
Alternative Name:	AK3 (AK3 Products)
Background:	The protein encoded by this gene is a GTP:ATP phosphotransferase that is found in the mitochondrial matrix. Several transcript variants encoding a few different isoforms have been found for this gene.,AK3,AK3L1,AK6,AKL3L,AKL3L1,FIX,Cancer,Signal Transduction,Endocrine & Metabolism,Mitochondrial metabolism,Mitochondrial markers,Amino acid metabolism,AK3
Molecular Weight:	18 kDa/21 kDa/25 kDa
Gene ID:	50808
UniProt:	Q9UIJ7
Pathways:	Nucleotide Phosphorylation , Ribonucleoside Biosynthetic Process

Application Details

Application Notes:	WB,1:500 - 1:2000
Comment:	HIGH QUALITY
Restrictions:	For Research Use only

Handling

Format:	Liquid
Buffer:	PBS with 0.02 % sodium azide,50 % glycerol, pH 7.3.
Preservative:	Sodium azide
Precaution of Use:	This product contains Sodium azide: a POISONOUS AND HAZARDOUS SUBSTANCE which should be handled by trained staff only.
Storage:	-20 °C
Storage Comment:	Store at -20°C. Avoid freeze / thaw cycles.



Western Blotting

Image 1. Western blot analysis of extracts of various cell lines, using AK3 antibody.