

Datasheet for ABIN6136782  
**anti-ALDH7A1 antibody (AA 430-539)**[Go to Product page](#)

## 2 Images

## Overview

Quantity:	100 µL
Target:	ALDH7A1
Binding Specificity:	AA 430-539
Reactivity:	Human
Host:	Rabbit
Clonality:	Polyclonal
Conjugate:	This ALDH7A1 antibody is un-conjugated
Application:	Western Blotting (WB), Immunohistochemistry (IHC), Immunofluorescence (IF)

## Product Details

Immunogen:	Recombinant fusion protein containing a sequence corresponding to amino acids 430-539 of human ALDH7A1 (NP_001173.2).
Sequence:	APILYVFKFK NEEEVFAWNN EVKQGLSSSI FTKDLGRIFR WLGPKGSDCG IVNVNIPTSG AEIGGAFGGE KHTGGGRESG SDAWKQYMRR STCTINYSKD LPLAQGIKFQ
Isotype:	IgG
Cross-Reactivity:	Human, Mouse, Rat
Characteristics:	Polyclonal Antibodies
Purification:	Affinity purification

## Target Details

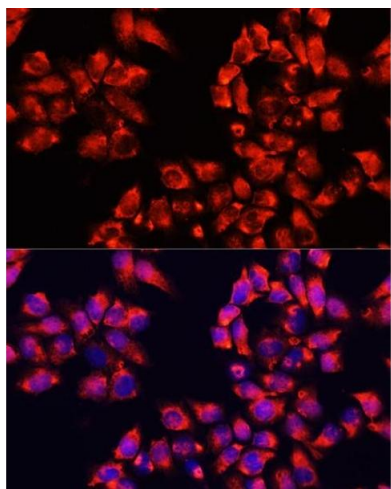
Target:	ALDH7A1
Alternative Name:	ALDH7A1 ( <a href="#">ALDH7A1 Products</a> )
Background:	<p>The protein encoded by this gene is a member of subfamily 7 in the aldehyde dehydrogenase gene family. These enzymes are thought to play a major role in the detoxification of aldehydes generated by alcohol metabolism and lipid peroxidation. This particular member has homology to a previously described protein from the green garden pea, the 26g pea turgor protein. It is also involved in lysine catabolism that is known to occur in the mitochondrial matrix. Recent reports show that this protein is found both in the cytosol and the mitochondria, and the two forms likely arise from the use of alternative translation initiation sites. An additional variant encoding a different isoform has also been found for this gene. Mutations in this gene are associated with pyridoxine-dependent epilepsy. Several related pseudogenes have also been identified.,ALDH7A1,ATQ1,EPD,PDE,ALDH7A1</p>
Molecular Weight:	51 kDa/55 kDa/58 kDa
Gene ID:	501
UniProt:	<a href="#">P49419</a>
Pathways:	<a href="#">Sensory Perception of Sound</a>

## Application Details

Application Notes:	WB,1:1000 - 1:4000,IHC,1:50 - 1:200,IF,1:50 - 1:200
Comment:	HIGH QUALITY
Restrictions:	For Research Use only

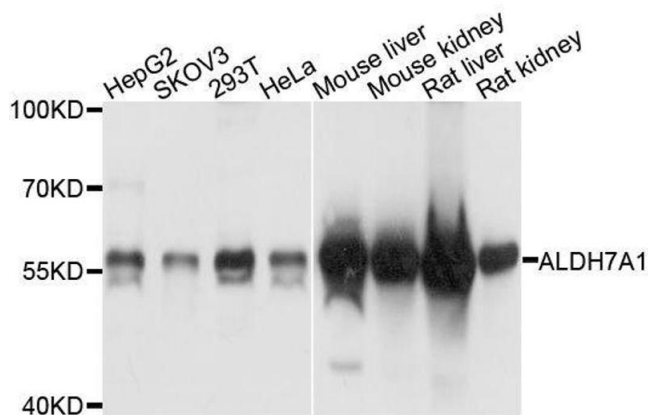
## Handling

Format:	Liquid
Buffer:	PBS with 0.02 % sodium azide,50 % glycerol, pH 7.3.
Preservative:	Sodium azide
Precaution of Use:	This product contains Sodium azide: a POISONOUS AND HAZARDOUS SUBSTANCE which should be handled by trained staff only.
Storage:	-20 °C
Storage Comment:	Store at -20°C. Avoid freeze / thaw cycles.



Immunofluorescence

**Image 1.** Immunofluorescence analysis of HeLa cells using antibody (ABIN6133474, ABIN6136782, ABIN6136783 and ABIN6224731) at dilution of 1:100. Blue: DAPI for nuclear staining.



Western Blotting

**Image 2.** Western blot analysis of extracts of various cell lines, using ALDH7A1 antibody.