

Datasheet for ABIN6136862
anti-ANAPC10 antibody (AA 1-185)



[Go to Product page](#)

3 Images

Overview

Quantity:	100 µL
Target:	ANAPC10
Binding Specificity:	AA 1-185
Reactivity:	Human
Host:	Rabbit
Clonality:	Polyclonal
Conjugate:	This ANAPC10 antibody is un-conjugated
Application:	Western Blotting (WB)

Product Details

Immunogen:	Recombinant fusion protein containing a sequence corresponding to amino acids 1-185 of human ANAPC10 (NP_055700.2).
Sequence:	MTTPNKTPPG ADPKQLERTG TVREIGSQAV WSLSSCKPGF GVDQLRDDNL ETYWQSDGSQ PHLVNIQFRR KTTVKTLCIY ADYKSDESYT PSKISVRVGN NFHNLQEIRQ LELVEPSGWI HVPLTDNHKK PTRTFMIQIA VLANHQNGRD THMRQIKIYT PVEESSIGKF PRCTTIDFMM YRSIR
Isotype:	IgG
Cross-Reactivity:	Human, Mouse, Rat
Characteristics:	Polyclonal Antibodies
Purification:	Affinity purification

Target Details

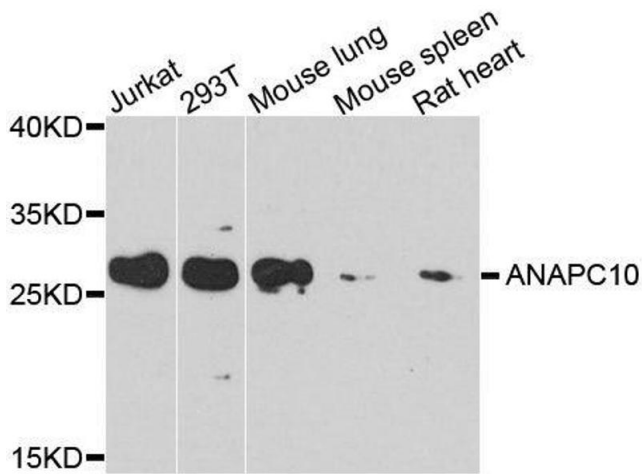
Target:	ANAPC10
Alternative Name:	ANAPC10 (ANAPC10 Products)
Background:	ANAPC10 is a core subunit of the anaphase-promoting complex (APC), or cyclosome, a ubiquitin protein ligase that is essential for progression through the cell cycle. APC initiates sister chromatid separation by ubiquitinating the anaphase inhibitor securin (PTTG1, MIM 604147) and triggers exit from mitosis by ubiquitinating cyclin B (CCNB1, MIM 123836), the activating subunit of cyclin-dependent kinase-1 (CDK1, MIM 116940) (summary by Wendt et al., 2001 [PubMed 11524682]).[supplied by OMIM, Feb 2011],ANAPC10,APC10,DOC1,Cell Biology & Developmental Biology,Ubiquitin,Ubiquitin-Proteasome Signaling Pathway,ANAPC10
Molecular Weight:	21 kDa
Gene ID:	10393
UniProt:	Q9UM13
Pathways:	M Phase

Application Details

Application Notes:	WB,1:500 - 1:2000
Comment:	HIGH QUALITY
Restrictions:	For Research Use only

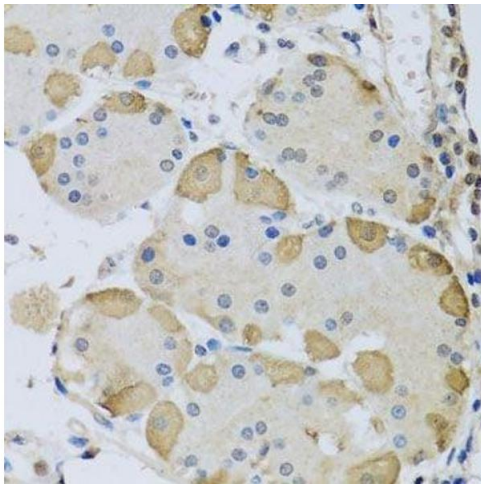
Handling

Format:	Liquid
Buffer:	PBS with 0.02 % sodium azide,50 % glycerol, pH 7.3.
Preservative:	Sodium azide
Precaution of Use:	This product contains Sodium azide: a POISONOUS AND HAZARDOUS SUBSTANCE which should be handled by trained staff only.
Storage:	-20 °C
Storage Comment:	Store at -20°C. Avoid freeze / thaw cycles.



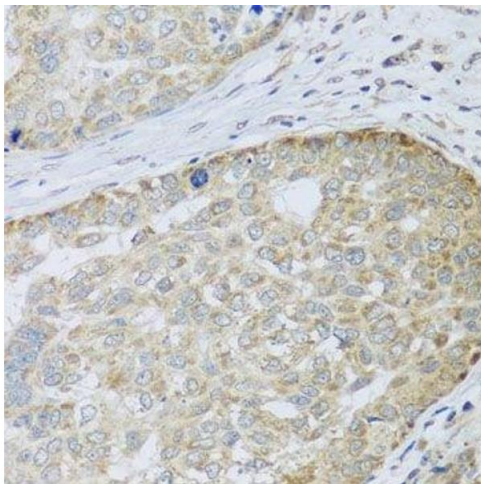
Western Blotting

Image 1. Western blot analysis of extracts of various cell lines, using ANAPC10 antibody.



Immunohistochemistry (Paraffin-embedded Sections)

Image 2. Immunohistochemistry of paraffin-embedded human stomach using ANAPC10 antibody.



Immunohistochemistry (Paraffin-embedded Sections)

Image 3. Immunohistochemistry of paraffin-embedded human liver cancer using ANAPC10 antibody.